

## Shrubs



**Flax-leaved Wattle** (*Acacia linifolia*) Thin soft leaves, flowers massed at the end of graceful branches. Full sun. Sandy soil. To 2m.

**Sydney Golden Wattle** (*Acacia longifolia*) Dark green leaves, showy golden yellow flowers. Full sun. Sandy soil. 3 – 4m.



**Sweet Wattle** (*Acacia suaveolens*) Slender blue green leaves on angular stems, clustered creamy yellow flowers. Full sun. Sandy soil. To 1.5m.

**Sunshine Wattle** (*Acacia terminalis*) Showy globular pale yellow flowers, tiny dark green leaves. One of the most spectacular flowering wattles in the area. Full sun. Sandy soil. To 1.5m.



**Prickly Moses** (*Acacia ulicifolia*) Small prickly leaves. Flowers are small yellow balls on stalks sticking out from the leaves. Full sun. Sandy soil. To 1m.

**Flannel Flower** (*Actinotus helianthi*) Grey green fern-like leaves covered in soft felty hairs, beautiful cream flowers. Full sun. Sandy or rocky soil. 0.5 – 1m.



**Dwarf Apple** (*Angophora hispida*) Spectacular masses of cream flowers attract a variety of beautiful jewel beetles. Large rounded leaves, dense bristly red hairs on new growth. Full sun. Sandy soil. To 4m.



**Heath-leaved Banksia** (*Banksia ericifolia*) Many tiny leaves, orange flower spikes to 20cm long. Full sun. Sandy soil. 4 – 5m.

**Hair-pin Banksia** (*Banksia spinulosa*) Thin stiff leaves, flower spikes golden orange with red and black. Full sun. Sandy soil. 2m.



**River Rose** (*Bauera rubioides*) A dense tangled mass of stems with small dark green leaves and beautiful bright pink flowers. Part shade. Moist soil. 0.5 – 1.5m.

**Sydney Boronia** (*Boronia ledifolia*) Small dark green leaves, whitish below. Lovely pink flowers. Full sun to part shade. To 1m.



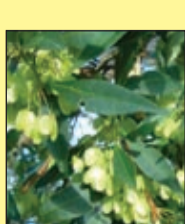
**Breynia** (*Breynia oblongifolia*) Grey green leaves, red branchlets, tiny red flowers. Part shade. Moist soil. 2 – 3m.

**Crowea** (*Crowea saligna*) Shiny green leaves. Beautiful long-lived rich rose flowers. Full sun to part shade. Sandy soil. 0.8m.

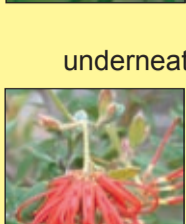


**Heathy Parrot Pea** (*Dillwynia retorta*) Short thin leaves, masses of yellow and red flowers. Full sun. Sandy soil. To 1m.

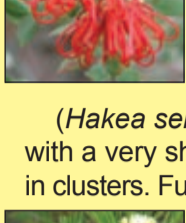
**Hop Bush** (*Dodonaea triquetra*) Thin soft mid-green leaves. Green and reddish fruit hanging in clusters. Full sun to part shade. Sandy soil. To 2m.



**White Spider Flower** (*Grevillea linearifolia*) Graceful branches with long thin leaves and white flowers. Full sun. Sandy soil. To 2m.



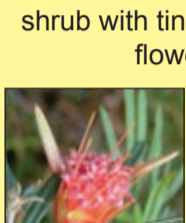
**Pink Spider Flower** (*Grevillea sericea*) Tough stiff leaves, sliver underneath, pink flowers. Full sun. Sandy soil. To 2m.



**Red Spider Flower** (*Grevillea speciosa*) Short stiff leaves, silvery hairs below, brilliant crimson flowers. Full sun. Sandy soil. To 1.5m.



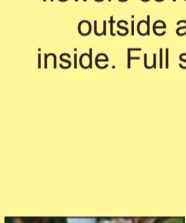
**Bushy Needlebush** (*Hakea sericea*) Needle-like leaves with a very sharp point, cream flowers in clusters. Full sun. Sandy soil. 2 – 3m.



**Drumsticks** (*Isopogon anethifolius*) Distinctive round yellow flowers, fine green leaves. Full sun. Sandy soil. To 1.5m.



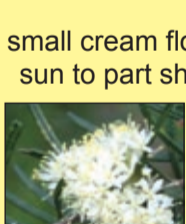
**Tick Bush** (*Kunzea ambigua*) Large dense shrub with tiny leaves and fuzzy white flowers. Full sun. Sandy soil. 3 – 4m.



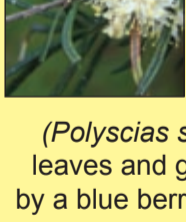
**Mountain Devils** (*Lambertia formosa*) Olive green leaves with a very sharp point. Brilliant red and orange flowers. Full sun. Sandy soil. To 1.5m.



**Rusty Petals** (*Lasiopetalum ferrugineum*) Long thin leaves with rusty hairs underneath. Shy drooping flowers covered in rusty hairs on the outside and a pale fine felt on the inside. Full sun to part shade. Sandy soil. To 1.5m.



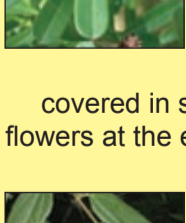
**Coastal Tea-tree** (*Leptospermum laevigatum*) A dense shrub with small grey green leaves and white flowers. Sandy soil. Tolerates salt spray. To 8m.



**Mock Olive** (*Notelaea longifolia*) Large stiff olive green leaves, small cream flowers, black berries. Full sun to part shade. Sandy soil. 2 – 3m.



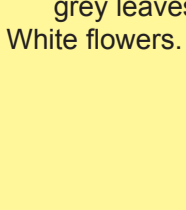
**Phebalium** (*Phebalium squamulosum*) Long thin leaves, shiny on top, silvery hairs beneath. Pretty pale yellow flowers in dense clusters. Full sun. Sandy soil. 1.5m – 2.5m.



**Elderberry Panax** (*Polyscias sambucifolia*) Lush green leaves and greenish flowers followed by a blue berry. Part shade. Moist soil. To 2.5m



**Large Leafed Bush Pea** (*Pultenaea daphnoides*) Flat rounded dark green leaves, yellow flowers with red markings. Full sun. Sandy soil. To 2.5m.



**Bush Pea** (*Pultenaea stipularis*) Densely covered in soft pointy leaves. Yellow flowers at the ends of growing tips. Full sun. Sandy soil. To 2m.

**Native Peach** (*Trema aspera*) Thin textured leaves, small black berries. Full sun to part shade. Moist soil. 3 – 5m.

**Westringia** (*Westringia fruticosa*) Short stiff grey leaves with white felt beneath. White flowers. Tolerates salt spray. Full sun. Sandy soil. 1 – 2m.

# Guide to Native Plant Species for Mosman Gardens



Large Trees

Small Trees

Shrubs

Tufted Plants

Ground Covers

Climbers

Ferns

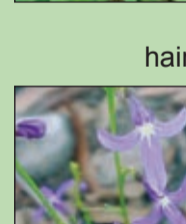
Grasses



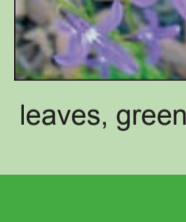
## Ground Covers



**Pennywort** (*Centella asiatica*) Light green, round toothed leaves.



**Kidney Weed** (*Dichondra repens*) Dark green (sometimes hairy) kidney shaped leaves.



**Lobelia** (*Lobelia dentata*) A small graceful plant with electric blue flowers.



**Pratia** (*Pratia purpurascens*) Tiny leaves, green above and purple below. Tiny white flowers.

## Buying Plants



As well as the plants listed in this brochure, there are many other suitable indigenous plants available in nurseries. Nursery staff will be able to advise you on what is available.

To maintain the genetic integrity of our local bushland it is recommended that only native plants from locally sourced seed be grown in Mosman gardens.

For information on where to buy local native plants, you can refer to the **Sharing Sydney Harbour** website at: [www.sydneyharbour.nsw.gov.au/vegetation/supplying\\_vegetation.php#](http://www.sydneyharbour.nsw.gov.au/vegetation/supplying_vegetation.php#)

For more information about native plants and bushland in Mosman, contact Council's Bushcare Officer on 9978 4000. You can also email [environment@mosman.nsw.gov.au](mailto:environment@mosman.nsw.gov.au) or refer to Council's website at: [www.mosman.nsw.gov.au/environment/florafauna.html](http://www.mosman.nsw.gov.au/environment/florafauna.html)

Information in this guide has been sourced from **Field Guide to the Native Plants of Sydney** by Les Robinson, 2nd ed –1994, Kangaroo Press, Roseville.

## Large Trees



**Lillypilly** (*Acmena smithii*) Dark green glossy leaves, creamy white flowers, large pink edible berries. Full sun to part shade. Moist soil. Dwarf shrub form in salty conditions. 4 –15m.

**Sydney Red Gum** (*Angophora costata*) Pink, smooth bark and convoluted branches. Creamy white flowers. Full sun. Rocky or sandy soil. To 25m.



**Coastal Banksia** (*Banksia integrifolia*) Leathery dark green leaves, hairless above with fine layer of white felt hairs below. Yellow flower spike to 12cm. Full sun. Sandy soil. Tolerates salt spray. 6 –16m.

**Coachwood** (*Ceratopetalum apetalum*) Smooth light grey mottled bark, large green leaves. Moist sheltered position. 10 – 25m.



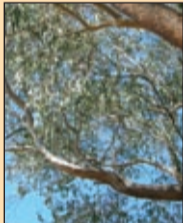
**Red Bloodwood** (*Corymbia gummifera*) Rough scaly bark on all limbs. Classic gumnut fruits. Full sun. Poor sandy soil. To 25m.

**Bangalay, Southern Mahogany** (*Eucalyptus botryoides*) Rough reddish bark, tough salt resistant leaves. Full sun. Sandy soil. 20 – 30m.



**Grey Gum** (*Eucalyptus punctata*) A beautiful gum, matt steel grey bark with patches of pink or cream. Full sun. Sandy soil. To 25m.

**Silvertop Ash** (*Eucalyptus sieberi*) Dark coarse barked trunk, smooth white coloured upper branches. Full sun. Sandy soil. To 25m.

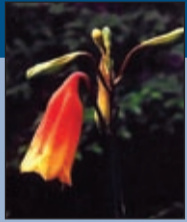


**Sydney Peppermint** (*Eucalyptus piperita*) Grey rough barked trunk with white upper limbs, dangling long strips of bark. Full sun. Sandy soil. To 30m.

**Cheese Tree** (*Glochidion ferdinandi*) Glossy dark green leaves, fruits resemble tiny cheese rounds. Full sun to part shade. Moist soil. 8 – 16m.



## Tufted Plants



**Christmas Bells** (*Blandfordia nobilis*) Long thin leaves, spectacular yellow, orange or red bell flowers at end of long stalks. Full sun. Moist soil. To 70cm.

**Blue Flax Lilly** (*Dianella caerulea*) Dark blue flower, rich purple berry, long dark green leaves. Full sun to part shade. Various soil. To 1m.



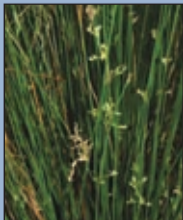
**Saw Sedge** (*Gahnia sieberana*) Long rough-edged leaves, attractive brown seed head. Full sun to part shade. Sandy or moist soil. To 2m.

**Mat Rush** (*Lomandra longifolia*) Long tough strap like leaves, white fragrant flowers. Full sun. Sandy soil. To 1m.

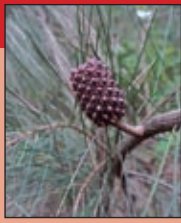


**Isolepis** (*Isolepis nodosus*) Dark green cylindrical leaves, small globular clusters of red brown seeds. Full sun to part shade. Sandy to moist soil. To 70cm.

**Common Rush** (*Juncus usitatus*) Arching cylindrical leaves with red-brown clusters of seeds. Moist or wet soil. To 80cm.



## Small Trees



**Black She-Oak** (*Allocasuarina littoralis*) Deeply fissured bark, dark green needle-like foliage. Full sun. Sandy soil. 4 –12m.

**Old Man Banksia** (*Banksia serrata*) Gnarled bumpy bark, leathery, serrated leaves, beautiful large grey green flowers. Full sun. Sandy soil. 4 –10m.



**Black Wattle** (*Callicoma serratifolia*) Dark green leaves: shiny above, fine white felt below. Flowers creamy fuzzy balls. Full sun to part shade. Sheltered position, moist soil. 5 –10m.



**Port Jackson Pine** (*Callitris rhomboidea*) Cypress-like native tree with both male and female cones. Full sun. Sandy soil. 6 –10m.



**Christmas Bush** (*Ceratopetalum gummiferum*) Slender leaves and spectacular bright red calyxes in summer. Full sun. Sandy soil. 4 – 8m.



**Blueberry Ash** (*Elaeocarpus reticulatus*) Pretty white flowers followed by dark blue berries. Attractive glossy green leaves. Full sun to part shade. Moist soil. 4 –10m.



**Prickly-leaved Paperbark** (*Melaleuca styphelioides*) Papery bark, stiff spiky leaves, white fluffy flowers. Full sun. Moist soil. 8 –12m.



**Water Gum** (*Tristaniopsis laurina*) Smooth patterned bark with streaks of cream, ochre and tan. Glossy green leaves and bright yellow flowers. Full sun to part shade. Moist soil. 4 –10m.



## Grasses



**Wallaby Grasses** (*Danthonia spp.*) Clump-forming grasses with fluffy cream seeds. Full sun. Sandy soil. 50 – 80cm.

**Plume Grasses** (*Dichelachne spp.*) Graceful erect clump-forming grasses with dense plume-like seed heads. Full sun. Sandy soil. To 80cm



**Echidna Grass** (*Echinopogon caespitosus*) A dense grass with slender leaves and a bristly seed head, suggestive of its common name. Full sun. Sandy soil. To 60cm.



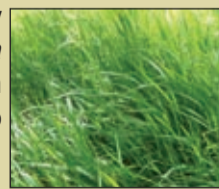
**Entolasia** (*Entolasia marginata*) Dense wiry spreading grass with dull grey green leaves. Full sun to part shade. Sandy soil. To 40cm.



**Blady Grass** (*Imperata cylindrica*) A clumping and creeping grass with attractive long yellow-green coloured leaves. Full sun. sandy soil. To 80cm.



**Weeping Meadow Grass** (*Microlaena stipoides*) A delicate grass with nodding seed heads. Full sun to part shade. Sandy soil. To 40cm.



**Basket Grasses** (*Oplismenus spp.*) Spreading ground covering grasses with small short leaves. Full sun to part shade. Sandy soil. To 20cm.



**Kangaroo Grass** (*Themeda australis*) Slender light green leaves and brown purple wiry seeds. Full sun. Sandy soil. To 80cm.



## Climbers

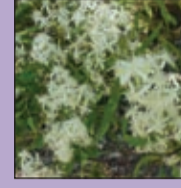


**Apple Berry Dumplings** (*Billardiera scandens*) Soft furry leaves, cream flowers and large purple edible fruits. Full sun. Sandy soil.

**Native Grape** (*Cissis hypoglauca*) A large woody vine with glossy green leaves and small black edible berries. Full sun to part shade. Moist soil.



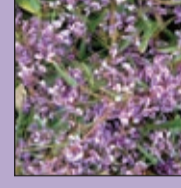
**Old Man's Beard, Travellers' Joy** (*Clematis aristata*) Masses of delicate white flowers in Spring. Full sun to part shade. Moist soil.



**Wombat Berry** (*Eustrephus latifolius*) Thin light green leaves on zig-zag stems. Bright orange edible berries. Full sun to part shade. Moist soil.



**False Sarsaparilla** (*Hardenbergia violacea*) Dark green leaves with masses of rich purple pea flowers. Full sun. Sandy soil.



**Twining Guinea Flower** (*Hibbertia dentata*) Dark green purplish leaves, bright yellow flowers. Full sun. Sandy soil.



**Dusky Coral Pea** (*Kennedia rubicunda*) A robust twiner with large red pea flowers. Full sun. Sandy soil.



**Wonga-Wonga Vine** (*Pandorea pandorana*) Glossy green leaves with spectacular cascades of white flowers. Full sun to part shade. Moist soil.



## Ferns



**Maidenhair Fern** (*Adiantum aethiopicum*) A delicate and beautiful fern, a well known favourite. Part shade. Moist soil.

**Birds Nest Fern** (*Asplenium australasicum*) Long tough light green leaves radiate from a central growing point. Part shade. Moist soil.



**False Bracken** (*Calochlaena dubia*) Large graceful light green fronds. Part shade. Moist soil.



**Hard Treefern** (*Cyathea australis*) Dark brown stout trunk with large fronds growing from the top. Part shade. Moist soil. To 3m.



**Rasp Fern** (*Doodia aspera*) Small tough dark green fronds. New fronds are deep pink coloured. Part shade. Moist soil.



**Screw Fern** (*Lindsaea linearis*) A ground covering fern with small pretty light green fronds. Part shade. Moist soil.



**Cycad, Burrawang** (*Macrozamia communis*) Fern-like plant with dark green glossy leathery fronds growing from a central stump. Full sun to part shade. Moist soil.

