



ecosure
improving ecosystems

MOSMAN FLORA AND FAUNA SURVEY
Volume 3 – Road Reserves
February 2022
MOSMAN MUNICIPAL COUNCIL

Executive summary

All surveys to date of the 11 road reserves have identified a total of 188 flora species, of which 99 are indigenous species, five are non-indigenous native species and 84 are introduced species. The current 2021-2022 survey recorded a total of 140 flora species within the 11 road reserves, of which 62 are indigenous species, five are non-indigenous native species and 65 are introduced species. Details are provided in Table 1.

Table 1 Flora results within road reserves

Road reserves (2001-2022)		Road reserves (2021-2022)	
Indigenous	99	Indigenous	62
Non-indigenous native	5	Non-indigenous native	5
Introduced	84	Introduced	65
Total flora	188	Total flora	140

The current survey identified six flora species that have not previously been recorded within the 11 road reserves. Those species are provided in Table 2.

Table 2 Flora species newly recorded within bushland reserves in Mosman local government area

Scientific name	Common name	Status
<i>Bauhinia purpurea</i>	purple bauhinia	*
<i>Cirsium vulgare</i>	spear thistle	*
<i>Corymbia maculata</i>	spotted gum	
<i>Ficus coronata</i>	sandpaper fig	
<i>Malva parviflora</i>	small-flowered mallow	*
<i>Nasturtium</i> sp.	nasturtium	*

* denotes introduced species

Fauna surveys of the 11 road reserves identified 20 species of fauna including 12 species of bird, three species of mammal and five species of reptile. The surveys also identified one threatened fauna species, the grey-headed flying-fox (*Pteropus poliocephalus*), which is threatened under both the EPBC Act and BC Act.

Contents

Executive summary.....	i
List of figures	vi
List of tables.....	vii
1 Introduction.....	1
2 Unmade Road Reserves.....	3
2.1 Unmade Bullecourt Avenue Reserve (South).....	3
2.1.1 General description.....	3
2.1.2 Vegetation communities.....	3
2.1.3 Threatened flora	3
2.1.4 Threatened ecological communities	3
2.1.5 Fauna habitat and fauna	3
2.1.6 Weeds	4
2.1.7 Threats to native plant communities.....	5
2.1.8 Current management practices	5
2.1.9 Conservation significance	5
2.1.10 Recommendations	5
2.1.11 Flora species list	5
2.1.12 Maps for Unmade Bullecourt Avenue Reserve (South).....	7
2.2 Unmade Bullecourt Avenue Reserve (North)	11
2.2.1 General description.....	11
2.2.2 Vegetation communities.....	11
2.2.3 Threatened flora	11
2.2.4 Threatened ecological communities	11
2.2.5 Fauna habitat and fauna	11
2.2.6 Weeds	12
2.2.7 Threats to native plant communities.....	13
2.2.8 Current management practices	13
2.2.9 Conservation significance	13
2.2.10 Recommendations	13
2.2.11 Flora species list	14
2.2.12 Maps for Unmade Bullecourt Avenue Reserve (North).....	15
2.3 Unmade Carrington Avenue Reserve.....	19
2.3.1 General description.....	19
2.3.2 Vegetation communities.....	19
2.3.3 Threatened flora	19
2.3.4 Threatened ecological communities	19
2.3.5 Fauna habitat and fauna	19
2.3.6 Weeds	20
2.3.7 Threats to native plant communities.....	20
2.3.8 Current management practices	20
2.3.9 Conservation significance	21
2.3.10 Recommendations	21
2.3.11 Flora species list	21

2.3.12	Maps for Unmade Carrington Avenue Reserve	22
2.4	Unmade Cobbittee Street Reserve	26
2.4.1	General description.....	26
2.4.2	Vegetation communities.....	26
2.4.3	Threatened flora	26
2.4.4	Threatened ecological communities	26
2.4.5	Fauna habitat and fauna	27
2.4.6	Weeds	27
2.4.7	Threats to native plant communities.....	28
2.4.8	Current management practices	28
2.4.9	Conservation significance	28
2.4.10	Recommendations	28
2.4.11	Flora species list	29
2.4.12	Maps for Unmade Cobbittee Street Reserve.....	30
2.5	Unmade Crown Road Reserve	34
2.5.1	General description.....	34
2.5.2	Vegetation communities.....	34
2.5.3	Threatened flora	34
2.5.4	Threatened ecological communities	34
2.5.5	Fauna habitat and fauna	34
2.5.6	Weeds	35
2.5.7	Threats to native plant communities.....	35
2.5.8	Current management practices	35
2.5.9	Conservation significance	36
2.5.10	Recommendations	36
2.5.11	Flora species list	36
2.5.12	Maps for Unmade Crown Road Reserve.....	38
2.6	Unmade Government Road Reserve	42
2.6.1	General description.....	42
2.6.2	Vegetation communities.....	42
2.6.3	Threatened flora	42
2.6.4	Threatened ecological communities	42
2.6.5	Fauna habitat and fauna	42
2.6.6	Weeds	43
2.6.7	Threats to native plant communities.....	43
2.6.8	Current management practices	43
2.6.9	Conservation significance	44
2.6.10	Recommendations	44
2.6.11	Flora species list	44
2.6.12	Maps for Unmade Government Road Reserve	46
2.7	Unmade Grecia Lane Reserve (West)	50
2.7.1	General description.....	50
2.7.2	Vegetation communities.....	50
2.7.3	Threatened flora	50
2.7.4	Threatened ecological communities	50
2.7.5	Fauna habitat and fauna	50

2.7.6	Weeds	51
2.7.7	Threats to native plant communities.....	51
2.7.8	Current management practices	52
2.7.9	Conservation significance	52
2.7.10	Recommendations	52
2.7.11	Flora species list	52
2.7.12	Maps for Unmade Grecia Lane (West).....	54
2.8	Unmade Harston Avenue Reserve.....	58
2.8.1	General description.....	58
2.8.2	Vegetation communities.....	58
2.8.3	Threatened flora	58
2.8.4	Threatened ecological communities	58
2.8.5	Fauna habitat and fauna	58
2.8.6	Weeds	59
2.8.7	Threats to native plant communities.....	60
2.8.8	Current management practices	60
2.8.9	Conservation significance	60
2.8.10	Recommendations	60
2.8.11	Flora species list	61
2.8.12	Maps for Unmade Harston Avenue Reserve	63
2.9	Unmade Grove Avenue Reserve	67
2.9.1	General description.....	67
2.9.2	Vegetation communities.....	67
2.9.3	Threatened flora	67
2.9.4	Threatened ecological communities	67
2.9.5	Fauna habitat and fauna	67
2.9.6	Weeds	68
2.9.7	Threats to native plant communities.....	68
2.9.8	Current management practices	68
2.9.9	Conservation significance	69
2.9.10	Recommendations	69
2.9.11	Flora species list	69
2.9.12	Maps for Unmade Grove Avenue Reserve.....	71
2.10	Unmade Inkerman Street Reserve (South)	75
2.10.1	General description.....	75
2.10.2	Vegetation communities.....	75
2.10.3	Threatened flora	75
2.10.4	Threatened ecological communities	75
2.10.5	Fauna habitat and fauna	75
2.10.6	Weeds	76
2.10.7	Threats to native plant communities.....	76
2.10.8	Current management practices	76
2.10.9	Conservation significance	77
2.10.10	Recommendations	77
2.10.11	Flora species list	77
2.10.12	Maps for Unmade Inkerman Street (South).....	79
2.11	Unmade Kahibah Road Reserve (South).....	83

2.11.1	General description.....	83
2.11.2	Vegetation communities.....	83
2.11.3	Threatened flora	83
2.11.4	Threatened ecological communities.....	83
2.11.5	Fauna habitat and fauna	83
2.11.6	Weeds	84
2.11.7	Threats to native plant communities.....	84
2.11.8	Current management practices	84
2.11.9	Conservation significance	85
2.11.10	Recommendations	85
2.11.11	Flora species list.....	85
2.11.12	Maps for Unmade Kahibah Road Reserve (South)	86

List of figures

Figure 1 Native vegetation communities – Unmade Bullecourt Avenue Reserve (South)	8
Figure 2 Native vegetation cover – Unmade Bullecourt Avenue Reserve (South)	9
Figure 3 Weed density – Unmade Bullecourt Avenue Reserve (South).....	10
Figure 4 Native vegetation communities – Unmade Bullecourt Avenue Reserve (North).....	16
Figure 5 Native vegetation cover – Unmade Bullecourt Avenue Reserve (North).....	17
Figure 6 Weed density – Unmade Bullecourt Avenue Reserve (North)	18
Figure 7 Native vegetation communities – Unmade Carrington Avenue Reserve.....	23
Figure 8 Native vegetation cover – Unmade Carrington Avenue Reserve	24
Figure 9 Weed density – Unmade Carrington Avenue Reserve	25
Figure 10 Native vegetation communities – Unmade Cobbittee Street Reserve.....	31
Figure 11 Native vegetation cover – Unmade Cobbittee Street Reserve	32
Figure 12 Weed density – Unmade Cobbittee Street Reserve	33
Figure 13 Native vegetation communities – Unmade Crown Road Reserve.....	39
Figure 14 Native vegetation cover – Unmade Crown Road Reserve.....	40
Figure 15 Weed density – Unmade Crown Road Reserve	41
Figure 16 Native vegetation communities – Unmade Government Road Reserve	47
Figure 17 Native vegetation cover – Unmade Government Road Reserve.....	48
Figure 18 Weed density – Unmade Government Road Reserve	49
Figure 19 Native vegetation communities – Grecia Lane Reserve (West).....	55
Figure 20 Native vegetation cover – Grecia Lane Reserve (West)	56
Figure 21 Weed density – Grecia Lane Reserve (West).....	57
Figure 22 Native vegetation communities – Unmade Harston Avenue Reserve.....	64
Figure 23 Native vegetation cover – Unmade Harston Avenue Reserve	65
Figure 24 Weed density – Unmade Harston Avenue Reserve.....	66
Figure 25 Native vegetation communities – Unmade Grove Avenue Reserve.....	72
Figure 26 Native vegetation cover – Unmade Grove Avenue Reserve.....	73
Figure 27 Weed density – Unmade Grove Avenue Reserve	74
Figure 28 Native vegetation communities – Unmade Inkerman Street Reserve (South).....	80
Figure 29 Native vegetation cover – Unmade Inkerman Street Reserve (South).....	81
Figure 30 Weed density – Unmade Inkerman Street Reserve (South)	82
Figure 31 Native vegetation communities – Unmade Kahibah Road Reserve (South)	87
Figure 32 Native vegetation cover – Unmade Kahibah Road Reserve (South)	88
Figure 33 Weed density – Unmade Kahibah Road Reserve (South).....	89

List of tables

Table 1 Flora results within road reserves.....	i
Table 2 Flora species newly recorded within bushland reserves in Mosman local government area	i
Table 3 Terms and abbreviations	1
Table 4 Vegetation communities in Unmade Bullecourt Avenue Reserve (South).....	3
Table 5 Fauna habitat summary of Unmade Bullecourt Avenue Reserve (South)	4
Table 6 Top five weed species and total weed cover at Unmade Bullecourt Avenue Reserve (South).....	4
Table 7 Bush regeneration and restoration works summary.....	5
Table 8 Recommended bush regeneration and restoration works.....	5
Table 9 Flora species list	5
Table 10 Regrowth Sydney Sandstone Gully Forest	11
Table 11 Fauna habitat summary of Unmade Bullecourt Avenue Reserve (North).....	12
Table 12 Top five weed species and total weed cover at Unmade Bullecourt Avenue Reserve (North)	12
Table 13 Bush regeneration and restoration works summary.....	13
Table 14 Recommended bush regeneration and restoration works.....	13
Table 15 Flora species list	14
Table 16 Established Planted Area in Unmade Carrington Avenue Reserve.....	19
Table 17 Fauna habitat summary of Unmade Carrington Avenue Reserve.	19
Table 18 Weeds within Established Planted Area in Unmade Carrington Avenue Reserve.	20
Table 19 Bush regeneration and restoration works summary in Unmade Carrington Avenue Reserve	20
Table 20 Recommended bush regeneration and restoration works.....	21
Table 21 Flora species list	21
Table 22 Vegetation communities in Unmade Cobbittee Street Reserve.....	26
Table 23 Summary of fauna habitat in Unmade Cobbittee Street Reserve.....	27
Table 24 Weeds within Unmade Cobbittee Street Reserve	27
Table 25 Bush regeneration and restoration works summary.....	28
Table 26 Recommended bush regeneration and restoration works.....	29
Table 27 Flora species list	29
Table 28 Vegetation Communities in Unmade Crown Road Reserve.....	34
Table 29 Fauna habitat summary of Unmade Crown Road Reserve.....	34
Table 30 Weeds within Unmade Crown Road Reserve.....	35
Table 31 Bush regeneration and restoration works summary.....	36
Table 32 Recommended bush regeneration and restoration works.....	36

Table 33 Flora species list	36
Table 34 Vegetation communities in Unmade Government Road Reserve.	42
Table 35 Fauna habitat summary of Unmade Government Road Reserve.....	42
Table 36 Weeds within Unmade Government Road Reserve.....	43
Table 37 Bush regeneration and restoration works summary.....	44
Table 38 Recommended bush regeneration and restoration works.....	44
Table 39 Flora species list	44
Table 40 Vegetation communities in Unmade Grecia Lane Reserve (West)	50
Table 41 Fauna habitat summary of Unmade Grecia Lane Reserve (West).....	50
Table 42 Weeds within Unmade Grecia Lane Reserve (West).....	51
Table 43 Bush regeneration and restoration works summary.....	52
Table 44 Recommended bush regeneration and restoration works.....	52
Table 45 Flora species list	52
Table 46 Vegetation communities within Unmade Harston Avenue Reserve	58
Table 47 Fauna habitat summary of Unmade Harston Avenue Reserve	59
Table 48 Weeds within Unmade Harston Avenue Reserve	59
Table 49 Bush regeneration and restoration works summary.....	60
Table 50 Recommended bush regeneration and restoration works.....	60
Table 51 Flora species list	61
Table 52 Vegetation communities within Unmade Grove Avenue Reserve	67
Table 53 Fauna habitat summary of Unmade Grove Avenue Reserve	67
Table 54 Weeds within Unmade Grove Avenue Reserve.....	68
Table 55 Bush regeneration and restoration works summary.....	69
Table 56 Recommended bush regeneration and restoration works.....	69
Table 57 Flora species list	69
Table 58 Vegetation communities at Unmade Inkerman Street (South)	75
Table 59 Fauna habitat summary of Unmade Inkerman Street Reserve (South).....	75
Table 60 Weeds within Unmade Inkerman Street Reserve (South).....	76
Table 61 Bush regeneration and restoration works summary.....	77
Table 62 Recommended bush regeneration and restoration works.....	77
Table 63 Flora species list	77
Table 64 Vegetation communities within Unmade Kahibah Road Reserve (South).....	83
Table 65 Fauna habitat summary of Unmade Kahibah Road (South) Reserve	84
Table 66 Weeds within Disturbed Sydney Sandstone Gully Forest.....	84
Table 67 Bush regeneration and restoration works summary.....	85
Table 68 Recommended bush regeneration and restoration works.....	85
Table 69 Flora species list	85

1 Introduction

This project is reported on in four volumes:

- Volume 1 – Flora and fauna survey and assessment summary
- Volume 2 – Project Area A (Bushland Reserves)
- **Volume 3 – Project Area B (Road Reserves).**

This is volume 3 which provides a detailed summary of the flora and fauna attributes for each unmade road reserve (11 in total) within the Mosman Local Government Area. Volume 1 provides a detailed introduction, glossary, methods, overall summary of results and references for all three volumes.

Individual flora species lists are included for each road reserve with the overall terms and abbreviations included in Table 3 below.

Table 3 Terms and abbreviations

General status	
*	Exotic (not native to Australia)
WoNS	Weeds of National Significance as listed on the <i>NSW Biosecurity Act 2015</i> (BA Act)
ni	Non – indigenous native species (does not naturally occur at this locality)
Conservation status	
CE	Critically Endangered – listed under Schedule 1A of the Biodiversity Conservation Act (BC Act)
E	Endangered – listed under Schedule 1 of the BC Act
V	Vulnerable – listed under Schedule 2 of the BC Act
ROTAP	Rare or Threatened Australian Plants (Briggs and Leigh 1996)
Other	
RR (number)	Road Reserve number
a	Recorded in previous surveys but not Ecosure 2021
b	Recorded in previous surveys and Ecosure 2021
c	Recorded by Ecosure 2021

Fauna terms and abbreviations

General status	
*	Exotic (not native to Australia)
P	Protected native species
Conservation status	
CE	Critically Endangered – listed under Schedule 1A of the BC Act
E	Endangered – listed under Schedule 1 of the BC Act
V	Vulnerable – listed under Schedule 2 of the BC Act

Other

RR (number)	Road Reserve number
a	Recorded in previous surveys but not Ecosure 2022
b	Recorded in previous surveys and Ecosure 2022
c	Recorded by Ecosure 2022

2 Unmade Road Reserves

2.1 Unmade Bullecourt Avenue Reserve (South)

2.1.1 General description

Unmade Bullecourt Avenue Reserve (South) (reserve number 82) is located on Bullecourt Avenue south of Bickell Road, to the east of Quakers Hat South (65) in the north-west of Mosman LGA. It occurs on a gentle slope with a walking path through the centre. For further information regarding geology and soil, see Total Earth Care (2007).

2.1.2 Vegetation communities

Two vegetation communities are recognised in Unmade Bullecourt Avenue Reserve (South), Disturbed Sydney Sandstone Gully Forest and Established Planted Area (Table 4; Figure 1).

Table 4 Vegetation communities in Unmade Bullecourt Avenue Reserve (South).

Established Planted Area

Canopy	<i>Angophora costata</i> (Sydney red gum), <i>Jacaranda mimosifolia</i> (jacaranda)
Midstorey / understorey	<i>Banksia integrifolia</i> subsp. <i>integrifolia</i> (coast banksia), <i>Callistemon citrinus</i> (crimson bottlebrush), <i>Lomandra longifolia</i> (spiny-headed mat-rush), <i>Crocasmia × crocosmiiflora</i> (montbretia), <i>Monstera deliciosa</i> (fruit salad plant)
Groundcover	<i>Ehrharta erecta</i> (panic veldtgrass), <i>Taraxacum officinale</i> (dandelion), <i>Bidens pilosa</i> (cobblers pegs), and <i>Plantago lanceolata</i> (lamb's tongues)

Disturbed Sydney Sandstone Gully Forest

Canopy	<i>Cyathea australis</i> (rough tree fern), <i>Banksia integrifolia</i> subsp. <i>integrifolia</i> (coast banksia), <i>Acacia floribunda</i> (white sally wattle) and <i>Callistemon citrinus</i> (crimson bottlebrush)
Midstorey / understorey	<i>Strelitzia nicolai</i> (giant bird of paradise), <i>Cestrum parqui</i> (green poisonberry), <i>Lomandra longifolia</i> (spiny-headed mat-rush)
Groundcover	<i>Bidens pilosa</i> (cobblers pegs), <i>Sida rhombifolia</i> (paddy's lucerne), <i>Solanum nigrum</i> (blackberry nightshade), <i>Nephrolepis cordifolia</i> (fishbone fern)

2.1.3 Threatened flora

No threatened flora species have been recorded in this road reserve.

2.1.4 Threatened ecological communities

The Native Vegetation of the Sydney Metropolitan Area (OEH 2016c) vegetation mapping did not identify any TECs within Unmade Bullecourt Avenue Reserve (South). The current survey did not detect any vegetation that corresponds to a TEC.

2.1.5 Fauna habitat and fauna

Fauna habitat recorded for Unmade Bullecourt Avenue Reserve (South) is summarised in Table 5.

Table 5 Fauna habitat summary of Unmade Bullecourt Avenue Reserve (South)

Fauna habitat (See Flora and Fauna Assessment, Volume 1 for criteria)

Locality	This road reserve is fairly isolated from surrounding bushland however is in close proximity to Quakers Hat South bushland reserve (65) and Unmade Bullecourt Avenue Reserve (North) (81).
Site specific	Moderate to good cover of native and exotic vegetation over the entire reserve.
General fauna	Foraging and roosting potential for common native birds, mammals and reptiles.

Five species (four birds and one reptile) were detected at this reserve during surveys in December 2021 and January 2022 Table 6. None of these species are threatened.

Table 6 Fauna species list for Unmade Bullecourt Avenue Reserve (South)

Class	Family	Scientific Name	Common Name	Status	RR 82
Birds	Corvidae	<i>Corvus coronoides</i>	Australian raven		c
Birds	Artamidae	<i>Cracticus torquatus</i>	grey butcherbird		c
Birds	Maluridae	<i>Malurus cyaneus</i>	superb fairy-wren		c
Birds	Meliphagidae	<i>Manorina melanocephala</i>	noisy miner		c
Reptiles	Scincidae	<i>Lampropholis guichenoti</i>	pale-flecked garden sunskink		c

2.1.6 Weeds

The top five weed species and total weed cover for each class is provided in Table 7. Overall weed cover is shown in Figure 2 and native cover is shown in Figure 3.

Table 7 Top five weed species and total weed cover at Unmade Bullecourt Avenue Reserve (South)

Weed Class	Scientific name	Common name	Dominant stratum	% Cover
30-69	<i>Jacaranda mimosifolia</i>	jacaranda	Upper	10
	<i>Ehrharta erecta</i>	Panic veldtgrass	Lower	10
	<i>Crocasmia × crocosmiiflora</i>	montbretia	Lower	3
	<i>Monstera deliciosa</i>	fruit salad plant	Lower	5
	<i>Bidens pilosa</i>	cobblers pegs	Lower	2
	Other weed species		Lower	2
	Total			32
>70	<i>Cestrum parqui</i>	green poisonberry	Middle	20
	<i>Strelitzia nicolai</i>	giant bird of paradise	Middle	15
	<i>Bidens pilosa</i>	cobblers pegs	Lower	10
	<i>Sida rhombifolia</i>	paddy's lucerne	Lower	10
	<i>Nephrolepis cordifolia</i>	fishbone fern	Lower	15
	Other weed species		Lower	5
	Total			75

2.1.7 Threats to native plant communities

The main threats to the plant communities within Unmade Bullecourt Avenue Reserve (South) include:

- garden escapes from surrounding private properties.

2.1.8 Current management practices

Unmade Bullecourt Avenue Reserve (South) is currently managed under Mosman Council's Bushcare Volunteer Program. A summary of the works to date is shown in Table 8.

Table 8 Bush regeneration and restoration works summary

Bush regeneration and restoration works summary

Weeding	• Secondary and maintenance weeding of noxious, woody and vine weed regrowth, annual and perennial herbs and grasses
Planting	• Planting of native groundcover, shrub and tree species

2.1.9 Conservation significance

This site has a low priority for conservation. Weed abundance in this reserve is high and has increased significantly since previous surveys by Total Earth Care (2007). Bushland restoration works are required to reduced weed abundance throughout the reserve.

2.1.10 Recommendations

Current bushland management practices should be continued. Prioritised recommendations are shown in Table 9.

Table 9 Recommended bush regeneration and restoration works

Recommended bush regeneration and restoration works

Priority	Description
1	Increase hand weeding and spot spraying for all noxious and environmental weeds throughout the road reserve.
2	Continue planting of native vegetation to supplement regeneration

2.1.11 Flora species list

Flora species recorded during current and previous surveys of Unmade Bullecourt Avenue Reserve (South) are listed in Table 10.

Table 10 Flora species list

Family	Scientific name	Common name	Status	RR82
Fabaceae - Mimosoideae	<i>Acacia floribunda</i>	white sally wattle		b
Polygonaceae	<i>Acetosa sagittata</i>	turkey rhubarb	*	a

Family	Scientific name	Common name	Status	RR82
Casuarinaceae	<i>Allocasuarina littoralis</i>	black she-oak		a
Myrtaceae	<i>Angophora costata</i>	Sydney red gum		b
Apocynaceae	<i>Araujia sericifera</i>	moth vine	*	a
Poaceae	<i>Avena fatua</i>	wild oats	*	a
Proteaceae	<i>Banksia integrifolia</i> subsp. <i>integrifolia</i>	coast banksia		b
Fabaceae - Caesalpinioideae	<i>Bauhinia</i> sp.		ni	b
Asteraceae	<i>Bidens pilosa</i>	cobblers pegs	*	c
Blechnaceae	<i>Blechnum</i> sp.			a
Poaceae	<i>Bromus catharticus</i>	praire grass	*	a
Myrtaceae	<i>Callistemon citrinus</i>	crimson bottlebrush		b
Myrtaceae	<i>Callistemon rigidus</i>	stiff bottlebrush		b
	<i>Canna indica</i>	canna lily	*	c
Solanaceae	<i>Cestrum nocturnum</i>		*	a
Solanaceae	<i>Cestrum parqui</i>	green poisonberry	*	b
Lauraceae	<i>Cinnamomum camphora</i>	camphor laurel	*	b
Amaryllidaceae	<i>Clivia minata</i>	clivia	*	b
Commelinaceae	<i>Commelina cyanea</i>	scurvy weed		b
Asteraceae	<i>Conyza</i> sp.	fleabane	*	b
Asteraceae	<i>Crassocephalum crepidioides</i>	thickhead	*	c
Cyatheaceae	<i>Cyathea australis</i>	rough tree fern		c
Phormiaceae	<i>Dianella caerulea</i>	blue flax-lily		b
Poaceae	<i>Ehrharta erecta</i>	panic veldtgrass	*	b
Moraceae	<i>Ficus rubiginosa</i>	Port Jackson fig		b
Fumariaceae	<i>Fumaria officinalis</i>		*	a
Euphorbiaceae	<i>Glochidion ferdinandi</i> var. <i>ferdinandi</i>	cheese tree		a
Proteaceae	<i>Grevillea</i> sp. <i>hort</i>		ni	b
Malvaceae	<i>Hibiscus mutabilis</i>		*	b
Euphorbiaceae	<i>Homalanthus populifolius</i>	bleeding heart		a
Asteraceae	<i>Hypochaeris radicata</i>	catsear	*	b
Balsaminaceae	<i>Impatiens walleriana</i>		*	a
Bignoniaceae	<i>Jacaranda mimosifolia</i>	jacaranda	*	c
Myrtaceae	<i>Kunzea ambigua</i>	tick bush		a
Verbenaceae	<i>Lantana camara</i>	lantana	WoNS	a
Oleaceae	<i>Ligustrum lucidum</i>	large leaved privet	*	b
Lomandraceae	<i>Lomandra longifolia</i>	spiny-headed mat-rush		b
Apocynaceae	<i>Marsdenia rostrata</i>	milk vine	*	b
Myrtaceae	<i>Melaleuca armillaris</i>	bracelet honey-myrtle		b
Malvaceae	<i>Modiola caroliniana</i>	red-flowered mallow	*	b

Family	Scientific name	Common name	Status	RR82
Araceae	<i>Monstera deliciosa</i>	fruit salad plant	*	b
Davalliaceae	<i>Nephrolepis cordifolia</i>	fishbone fern	ni	b
Oleaceae	<i>Olea europaea</i> subsp. <i>cuspidata</i>	olive	*	b
Urticaceae	<i>Parietaria judaica</i>	asthma weed	*	a
Poaceae	<i>Pennisetum setaceum</i>	fountain grass	*	a
Arecaceae	<i>Phoenix canariensis</i>	canary island date palm	*	b
Plantaginaceae	<i>Plantago lanceolata</i>	lamb's tongues	*	b
Proteaceae	<i>Protea</i> sp.	protea sp	*	a
Dennstaedtiaceae	<i>Pteridium esculentum</i>	common bracken		b
Fabaceae - Caesalpinioideae	<i>Senna pendula</i> var. <i>glabrata</i>		*	a
Malvaceae	<i>Sida rhombifolia</i>	paddy's lucerne	*	b
Solanaceae	<i>Solanum mauritianum</i>	wild tobacco	*	a
Solanaceae	<i>Solanum nigrum</i>	blackberry nightshade	*	c
Asteraceae	<i>Sonchus oleraceus</i>	common sowthistle	*	a
Caryophyllaceae	<i>Stellaria media</i>	common chickweed	*	a
Strelitziaceae	<i>Strelitzia nicolai</i>	giant bird of paradise	*	b
Myrtaceae	<i>Syzygium</i> sp.	lilly pilly		a
Asteraceae	<i>Taraxacum officinale</i>	dandelion	*	c
Lamiaceae	<i>Westringia fruticosa</i>	coastal rosemary		a
Fabaceae - Faboideae	<i>Wisteria</i> sp.	wisteria	*	b

2.1.12 Maps for Unmade Bullecourt Avenue Reserve (South)



Vegetation communities

Established Planted Area
 Disturbed Sydney Sandstone Gully Forest
 Open Space

Figure 1: Vegetation Communities and threatened flora locations - Unmade Bullecourt Ave Reserve (South)

Site boundary

Mosman Council

Mosman Flora and Fauna Survey 2021





Figure 2: Native vegetation cover percent - Unmade Bullecourt Ave Reserve (South)

Mosman Council

Mosman Flora and Fauna Survey 2021

Site boundary

Native vegetation cover %

<30

30-69

Open Space





Figure 3: Weed density - Unmade Bullecourt Ave Reserve (South)

Mosman Council

Mosman Flora and Fauna Survey 2021

Site boundary

Weed density

30-69

>70

Open Space

2.2 Unmade Bullecourt Avenue Reserve (North)

2.2.1 General description

Unmade Bullecourt Avenue Reserve (North) (reserve number 81) is located on Bullecourt Avenue north of Bickell Road, to the east of Quakers Hat South (65) in the north-west of Mosman LGA. It occurs on a gentle slope with a walking path through the centre. For further information regarding geology and soil, see Total Earth Care (2007).

2.2.2 Vegetation communities

Two vegetation communities are recognised in Unmade Bullecourt Avenue Reserve (North), Disturbed Sydney Sandstone Gully Forest and Established Planted Area (Table 11; Figure 4).

Table 11 Regrowth Sydney Sandstone Gully Forest

Regrowth Sydney Sandstone Gully Forest	
Canopy	<i>Angophora costata</i> (Sydney red gum), <i>Eucalyptus botryoides</i> (bangalay), <i>Ficus rubiginosa</i> (Port Jackson fig)
Midstorey / understorey	<i>Ficus rubiginosa</i> (Port Jackson fig), <i>Acacia floribunda</i> (white sally wattle), <i>Pittosporum undulatum</i> (sweet pittosporum)
Groundcover	<i>Pteridium esculentum</i> (common bracken), <i>Nephrolepis cordifolia</i> (fishbone fern)
Disturbed Sydney Sandstone Gully Forest	
Canopy	<i>Brachychiton acerifolius</i> (flame tree), <i>Cupressus</i> sp. (cypress), <i>Pinus</i> sp. (pine)
Midstorey/ Understorey	<i>Pittosporum undulatum</i> (sweet pittosporum), <i>Cyathea australis</i> (black tree-fern), <i>Ligustrum lucidum</i> (large leaved privet), <i>Camelia</i> sp. (camelia), <i>Monstera deliciosa</i> (fruit salad plant)
Groundcover	<i>Hedera</i> sp. (ivy), <i>Agapanthus praecox</i> subsp. <i>orientalis</i> (African lily), <i>Ehrharta erecta</i> (panic veldtgrass)

2.2.3 Threatened flora

No threatened flora have been recorded in this road reserve.

2.2.4 Threatened ecological communities

The Native Vegetation of the Sydney Metropolitan Area (OEH 2016c) vegetation mapping did not identify any TECs within Unmade Bullecourt Avenue Reserve (North). The current survey did not detect any vegetation that corresponds to a TEC.

2.2.5 Fauna habitat and fauna

Fauna habitat recorded for Unmade Bullecourt Avenue Reserve (North) is summarised in Table 12.

Table 12 Fauna habitat summary of Unmade Bullecourt Avenue Reserve (North)

Fauna habitat (See Flora and Fauna Assessment, Volume 1 for criteria)

Locality	This road reserve is isolated from surrounding bushland however is in close proximity to Quakers Hat South bushland reserve (65) and Unmade Bullecourt Avenue Reserve (South) (82).
Site specific	Low cover of native and exotic vegetation over the entire reserve.
General fauna	Foraging and roosting potential for common native birds, mammals and reptiles.

Five species (four birds and one reptile) were detected at this reserve during surveys in December 2021 and January 2022 (Table 13). None of these species are threatened.

Table 13 Fauna species list for Unmade Bullecourt Avenue Reserve (North)

Class	Family	Scientific Name	Common Name	Status	RR 81
Birds	Corvidae	<i>Corvus coronoides</i>	Australian raven		c
Birds	Meliphagidae	<i>Manorina melanocephala</i>	noisy miner		c
Birds	Artamidae	<i>Strepera graculina</i>	pieb currawong		c
Birds	Psittacidae	<i>Trichoglossus haematodus</i>	rainbow lorikeet		c
Reptiles	Scincidae	<i>Lampropholis delicata</i>	dark-flecked garden sunskink		c

2.2.6 Weeds

The top five weed species and total weed cover for each class is provided in Table 14. Overall weed cover is shown in Figure 5 and native cover is shown in Figure 6.

Table 14 Top five weed species and total weed cover at Unmade Bullecourt Avenue Reserve (North)

Weed Class Density (%)	Scientific name	Common name	Dominant stratum	% Cover
<10	<i>Hedera sp.</i>	ivy	Lower	3
	<i>Ehrharta erecta</i>	panic veldtgrass	Lower	1
	<i>Nephrolepis cordifolia</i>	Fishbone fern	Lower	1
	<i>Parietaria judaica</i>	Asthma weed	Lower	1
	Other weed species	annuals	Lower	1
				Total
10-29	<i>Ehrharta erecta</i>	panic veldtgrass	Lower	10
	<i>Nephrolepis cordifolia</i>	fishbone fern	Lower	5
	<i>Ligustrum lucidum</i>	large-leaved privet	Upper	1
	<i>Lantana camara</i>	lantana	Middle	1
	<i>Senna pendula var. glabrata</i>	cassia	Middle	1
	Other weed species		Lower	1
			Total	19
>70	<i>Hedera sp.</i>	ivy	Lower	30
	<i>Ligustrum lucidum</i>	large-leaved privet	Upper	10
	<i>Jacaranda mimosifolia</i>	jacaranda	Upper	10

Weed Class Density (%)	Scientific name	Common name	Dominant stratum	% Cover
	<i>Monstera deliciosa</i>	fruit salad plant	Lower	10
	<i>Pinus</i> sp.	pine	Upper	10
	Other weed species			5
			Total	75

2.2.7 Threats to native plant communities

The main threats to the plant communities within Unmade Bullecourt Avenue Reserve (North) include:

- garden escapes from surrounding private properties.

2.2.8 Current management practices

Unmade Bullecourt Avenue Reserve (North) was being managed as a bush regeneration and restoration site under Councils Bushcare Volunteer Program, however works have ceased. A summary of the works to date is shown in Table 15.

Table 15 Bush regeneration and restoration works summary

Bush regeneration and restoration works summary	
Weeding	<ul style="list-style-type: none"> • Primary weeding targeting noxious, woody and vine weeds • Secondary and maintenance weeding of noxious, woody and vine weed regrowth
Planting	<ul style="list-style-type: none"> • Scattered plantings to supplement existing native vegetation and regeneration

2.2.9 Conservation significance

This site has a low priority for conservation. Weed abundance in this reserve is high and has increased significantly since previous surveys by Total Earth Care (2007). Bushland restoration works are required to reduced weed abundance and re-establish Sydney Sandstone Gully Forest community throughout the reserve.

2.2.10 Recommendations

Bushland management practices should be re-established. Prioritised recommendations are shown in Table 16.

Table 16 Recommended bush regeneration and restoration works

Recommended bush regeneration and restoration works	
Priority	Description
1	Hand weeding and spot spraying for all noxious and environmental weeds throughout the road reserve.
2	Planting of native vegetation to supplement regeneration

2.2.11 Flora species list

Flora species recorded during current and previous surveys of Unmade Bullecourt Avenue Reserve (North) are listed in Table 17.

Table 17 Flora species list

Family	Scientific name	Common name	Status	RR81
Fabaceae - Mimosoideae	<i>Acacia floribunda</i>	white sally wattle		b
Alliaceae	<i>Agapanthus praecox</i> subsp. <i>orientalis</i>	African lily	*	b
Casuarinaceae	<i>Allocasuarina littoralis</i>	black she-oak		a
Primulaceae	<i>Anagallis arvensis</i>	scarlet pimpernel	*	b
Myrtaceae	<i>Angophera costata</i>	Sydney red gum		c
Proteaceae	<i>Banksia integrifolia</i> subsp. <i>integrifolia</i>	coast banksia		a
Proteaceae	<i>Banksia serrata</i>	old-man banksia		a
Sterculiaceae	<i>Brachychiton acerifolius</i>	flame tree		b
Poaceae	<i>Briza minor</i>	shivery grass	*	a
Cunoniaceae	<i>Callicoma serratifolia</i>	black wattle		a
Myrtaceae	<i>Callistemon citrinus</i>	crimson bottlebrush		b
Myrtaceae	<i>Callistemon rigidus</i>	stiff bottlebrush		a
Theaceae	<i>Camelia</i> sp.	camelia	*	b
Cannaceae	<i>Canna indica</i>	tous-les-mois arrowroot	*	b
Casuarinaceae	<i>Casuarina glauca</i>	swamp oak		a
Anthericaceae	<i>Chlorophytum comosum</i>	spider plant	*	b
Amaryllidaceae	<i>Clivia minata</i>	clivia	*	b
Commelinaceae	<i>Commelina cyanea</i>	scurvy weed		b
Asteraceae	<i>Conyza</i> sp.	fleabane	*	b
Cupressaceae	<i>Cupressus</i> sp.	cypress	*	b
Cyatheaceae	<i>Cyathea australis</i>	black tree-fern		b
Cyatheaceae	<i>Cyathea cooperi</i>	straw treefern		a
Apiaceae	<i>Cyclospermum leptophyllum</i>	slender celery	*	a
Phormiaceae	<i>Dianella caerulea</i>	blue flax-lily		b
Sapindaceae	<i>Dodonaea triquetra</i>	large-leaf hop-bush		a
Poaceae	<i>Ehrharta erecta</i>	panic veldtgrass	*	b
Elaeocarpaceae	<i>Elaeocarpus reticulatus</i>	blueberry ash		b
Myrtaceae	<i>Eucalyptus botryoides</i>	bangalay		b
Euphorbiaceae	<i>Euphorbia peplus</i>	petty spurge	*	a
Moraceae	<i>Ficus rubiginosa</i>	Port Jackson fig		b
Fumariaceae	<i>Fumaria officinalis</i>		*	a
Euphorbiaceae	<i>Glochidion ferdinandi</i> var. <i>ferdinandi</i>	cheese tree		a
Proteaceae	<i>Grevillea linearifolia</i>	linear-leaf grevillea		b
Proteaceae	<i>Grevillea</i> sp. <i>hort</i>		ni	b
Fabaceae - Faboideae	<i>Hardenbergia violacea</i>	purple coral pea		a

Family	Scientific name	Common name	Status	RR81
Araliaceae	<i>Hedera</i> sp.	ivy	*	b
Malvaceae	<i>Hibiscus mutabilis</i>	hibiscus	*	b
Balsaminaceae	<i>Impatiens walleriana</i>		*	a
Convolvulaceae	<i>Ipomoea indica</i>	morning glory	*	a
Bignoniaceae	<i>Jacaranda mimosifolia</i>	jacaranda	*	b
Fabaceae - Faboideae	<i>Kennedia rubicunda</i>	dusky coral pea		a
Myrtaceae	<i>Kunzea ambigua</i>	tick bush		b
Lythraceae	<i>Lagerstroemia indica</i>	crepe myrtle	*	b
Myrtaceae	<i>Leptospermum polygalifolium</i>	yellow tea-tree		a
Myrtaceae	<i>Leptospermum</i> sp.			a
Oleaceae	<i>Ligustrum lucidum</i>	large leaved privet	*	b
Ruscaceae	<i>Liriope muscari</i>	lily turf	*	a
Lomandraceae	<i>Lomandra longifolia</i>	spiny-headed mat-rush		b
Proteaceae	<i>Macadamia integrifolia</i>	Queensland nut	ROTAP	b
Magnoliaceae	<i>Michelia figo</i>	port wine magnolia	*	a
Araceae	<i>Monstera deliciosa</i>	fruit salad plant	*	b
Rutaceae	<i>Murraya paniculata</i>		*	b
Davalliaceae	<i>Nephrolepis cordifolia</i>	fishbone fern	ni	b
Alliaceae	<i>Nothoscordum borbonicum</i>	onion weed	*	a
Ochnaceae	<i>Ochna serrulata</i>	mickey mouse plant	*	a
Oleaceae	<i>Olea europaea</i> subsp. <i>cuspidata</i>	olive	*	b
Poaceae	<i>Oplismenus aemulus</i>	oplismenus		c
Urticaceae	<i>Parietaria judaica</i>	asthma weed	*	b
Poaceae	<i>Pennisetum setaceum</i>	fountain grass	*	a
Pinaceae	<i>Pinus</i> sp.	pine	*	b
Pittosporaceae	<i>Pittosporum undulatum</i>	sweet pittosporum		a
Dennstaedtiaceae	<i>Pteridium esculentum</i>	common bracken		b
Fabaceae - Caesalpinioideae	<i>Senna pendula</i> var. <i>glabrata</i>		*	a
Poaceae	<i>Setaria palmifolia</i>	palm grass	*	b
Malvaceae	<i>Sida rhombifolia</i>	paddy's lucerne	*	c
Solanaceae	<i>Solanum mauritianum</i>	wild tobacco	*	a
Asteraceae	<i>Sonchus oleraceus</i>	common sowthistle	*	a
Melastomataceae	<i>Tibouchina</i> sp.	tibouchina	*	a
Commelinaceae	<i>Tradescantia fluminensis</i>	trad	*	a
Violaceae	<i>Viola odorata</i>		*	a
Lamiaceae	<i>Westringia fruticosa</i>	coastal rosemary		a
Lamiaceae	<i>Westringia longifolia</i>	long-leaved westringia		a
Agavaceae	<i>Yucca aloifolia</i>	Spanish bayonet	*	b

2.2.12 Maps for Unmade Bullecourt Avenue Reserve (North)



Vegetation communities

 Disturbed Sydney Sandstone Gully Forest



 Regrowth Sydney Sandstone Gully Forest

Figure 4: Vegetation Communities and threatened flora locations - Unmade Bullecourt Ave Reserve (North)

 Site boundary

Mosman Council

Mosman Flora and Fauna Survey 2021



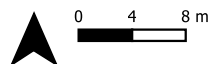
Figure 5: Native vegetation cover percent - Unmade Bullecourt Ave Reserve (North)

Mosman Council

Mosman Flora and Fauna Survey 2021



Job number: PR6939
Date: 30/01/2022



GDA 1994 MGA Zone 56
Projection: Transverse Mercator
Datum: GDA 1994
Units: Meter

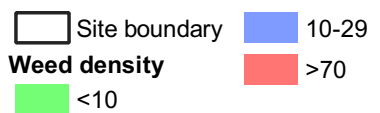
Data Sources: © State of New South Wales (Department of Planning, Industry and Environment), 2022; © Ecosure 2022
ECOSURE does not warrant the accuracy or completeness of information displayed in this map. Any person using this map does so at their own risk, and should consider the context of the report that this map supports.
ECOSURE shall bear no responsibility or liability for any errors, faults, defects, or omissions in the information.



Figure 6: Weed density - Unmade Bullecourt Ave Reserve (North)

Mosman Council

Mosman Flora and Fauna Survey 2021



2.3 Unmade Carrington Avenue Reserve

2.3.1 General description

Unmade Carrington Avenue Reserve (reserve number 168) is located on the corner of Glen Road and Bay Street below Quakers Hat South (1) in the north-west of Mosman LGA. For further information regarding geology and soil, see Total Earth Care (2007).

2.3.2 Vegetation communities

One vegetation community is recognised in Unmade Carrington Avenue Reserve, Established Planted Area (Table 18; Figure 7).

Table 18 Established Planted Area in Unmade Carrington Avenue Reserve

Established Planted Area

Canopy	<i>Eucalyptus botryoides</i> (bangalay)
Midstorey	<i>Callitris rhomboidei</i> (Port Jackson pine), <i>Banksia integrifolia</i> subsp. <i>integrifolia</i>
Understorey	<i>Leptospermum laevigatum</i> (coastal tea-tree), <i>Glochidion ferdinandi</i> var. <i>ferdinandi</i> (cheese tree) and <i>Homalanthus populifolius</i> (bleeding heart)
Groundcover	<i>Commelina cyanea</i> (scurvy weed), <i>Lomandra longifolia</i> (spiny-headed mat-rush), <i>Imperata cylindrica</i> (blady grass) and <i>Dianella caerulea</i> (blue flax-lily)

2.3.3 Threatened flora

No threatened flora species have been recorded in this road reserve.

2.3.4 Threatened ecological communities

The Native Vegetation of the Sydney Metropolitan Area (OEH 2016c) vegetation mapping did not identify any TECs within Unmade Carrington Avenue Reserve. The current survey did not detect any vegetation that corresponds to a TEC.

2.3.5 Fauna habitat and fauna

Fauna habitat recorded for Unmade Carrington Avenue Reserve is summarised in Table 19.

Table 19 Fauna habitat summary of Unmade Carrington Avenue Reserve.

Fauna habitat (See Flora and Fauna Assessment, Volume 1 for criteria)

Locality	This road reserve is isolated from surrounding bushland however is near Quakers Hat South bushland reserve (1).
Site specific	Moderate to dense cover of mostly native vegetation over most of the eastern part of the reserve. Loose rocks scattered throughout the reserve.
General fauna	Foraging, roosting and nesting potential for common native birds, mammals and reptiles
Threatened fauna	Foraging potential for threatened megachiropteran bat species

Four species (three birds and one reptile) were detected at this reserve during surveys in

December 2021 and January 2022 (Table 20). None of these species are threatened.

Table 20 Fauna species list for Unmade Carrington Avenue Reserve.

Class	Family	Scientific Name	Common Name	Status	RR 168
Birds	Corvidae	<i>Corvus coronoides</i>	Australian raven		c
Birds	Meliphagidae	<i>Manorina melanocephala</i>	noisy miner		c
Birds	Psittacidae	<i>Trichoglossus haematodus</i>	rainbow lorikeet		c
Reptiles	Scincidae	<i>Lampropholis guichenoti</i>	pale-flecked garden sunskink		c

2.3.6 Weeds

The top five weed species and their densities within Unmade Carrington Avenue Reserve are listed in Table 21. Overall weed cover is shown in Figure 8 and native cover is shown in Figure 9.

Table 21 Weeds within Established Planted Area in Unmade Carrington Avenue Reserve.

Established Planted Area

Scientific name	Common name	Dominant stratum	% Cover
<i>Bidens pilosa</i>	cobblers pegs	ground	1
<i>trifolium repens</i>	white clover	ground	1
<i>Tradescantia fluminensis</i>	trad	ground	1
<i>Oxalis corniculata</i>		ground	1
<i>Ehrharta erecta</i>	panic veldtgrass	ground	1
Total % weed cover throughout community			<10

2.3.7 Threats to native plant communities

The main threats to the plant communities within Unmade Carrington Avenue Reserve include:

- garden escapes from surrounding private properties.

2.3.8 Current management practices

Unmade Carrington Avenue Reserve is currently managed under Mosman Council's Unmade Road Reserves Restoration Program. A summary of the works to date is shown in Table 22.

Table 22 Bush regeneration and restoration works summary in Unmade Carrington Avenue Reserve

Bush regeneration and restoration works summary

Weeding	<ul style="list-style-type: none"> • Primary weeding targeting noxious, woody and vine weeds • Secondary and maintenance weeding of noxious, woody and vine weed regrowth
Planting	<ul style="list-style-type: none"> • Scattered plantings to supplement existing native vegetation and regeneration

2.3.9 Conservation significance

This site has a medium priority for conservation. Weed abundance in this reserve is low and has reduced significantly since previous surveys by Total Earth Care (2007). Bushland restoration works are still required to maintain low weed abundance throughout the reserve.

2.3.10 Recommendations

Current bushland management practices should be continued. Prioritised recommendations are shown in Table 23.

Table 23 Recommended bush regeneration and restoration works

Recommended bush regeneration and restoration works

Priority	Description
1	Continue hand weeding and spot spraying for all noxious and environmental weeds throughout the road reserve.
2	Continue planting of native vegetation to supplement regeneration

2.3.11 Flora species list

Flora species recorded during current and previous surveys of Unmade Carrington Avenue Reserve are listed in Table 24.

Table 24 Flora species list

Family	Scientific name	Common name	Status	RR168
Fabaceae - Mimosoideae	<i>Acacia binervia</i>	coast myall		a
Fabaceae - Mimosoideae	<i>Acacia floribunda</i>	white sally wattle		a
Fabaceae - Mimosoideae	<i>Acacia longifolia</i> subsp. <i>longifolia</i>	Sydney golden wattle		a
Fabaceae - Mimosoideae	<i>Acacia parramattensis</i>	Sydney green wattle		b
Polygonaceae	<i>Acetosa sagittate</i>	turkey rhubarb	*	a
Casuarinaceae	<i>Allocasuarina littoralis</i>	black she-oak		a
Poaceae	<i>Avena fatua</i>	wild oats	*	a
Proteaceae	<i>Banksia ericifolia</i> subsp. <i>ericifolia</i>	heath-leaved banksia		b
Proteaceae	<i>Banksia integrifolia</i> subsp. <i>integrifolia</i>	coast banksia		b
Asteraceae	<i>Bidens pilosa</i>	cobblers pegs	*	b
Poaceae	<i>Bromus catharticus</i>	prairie grass	*	a
Cupressaceae	<i>Callitris rhomboidea</i>	Port Jackson pine		c
Vitaceae	<i>Cissus hypoglauca</i>	water vine		a
Commelinaceae	<i>Commelina cyanea</i>	scurvy weed		b
Asteraceae	<i>Conyza</i> sp.	fleabane	*	a
Apiaceae	<i>Cyclospermum leptophyllum</i>	slender celery	*	b
Poaceae	<i>Cymbopogon refractus</i>	barbwire grass		a
Phormiaceae	<i>Dianella caerulea</i>	blue flax-lily		b

Family	Scientific name	Common name	Status	RR168
Sapindaceae	<i>Dodonaea triquetra</i>	large-leaf hop-bush		a
Elaeocarpaceae	<i>Elaeocarpus reticulatus</i>	blueberry ash		b
Poaceae	<i>Ehrharta erecta</i>	panic veldtgrass	*	c
Myrtaceae	<i>Eucalyptus botryoides</i>	bangalay		b
Euphorbiaceae	<i>Euphorbia peplus</i>	petty spurge	*	b
Fumariaceae	<i>Fumaria officinalis</i>		*	a
Asteraceae	<i>Gamochaeta americana</i>	cudweed	*	b
Euphorbiaceae	<i>Glochidion ferdinandi</i> var. <i>ferdinandi</i>	cheese tree		b
Proteaceae	<i>Hakea sericea</i>	needlebush		a
Euphorbiaceae	<i>Homalanthus populifolius</i>	bleeding heart		b
Cyperaceae	<i>Isolepis nodosa</i>	knobby club-rush		a
Myrtaceae	<i>Kunzea ambigua</i>	tick bush		b
Myrtaceae	<i>Leptospermum laevigatum</i>	coastal tea-tree		c
Myrtaceae	<i>Leptospermum polygalifolium</i>	yellow tea-tree		a
Lomandraceae	<i>Lomandra longifolia</i>	spiny-headed mat-rush		b
Apocynaceae	<i>Marsdenia rostrata</i>	milk vine		a
Alliaceae	<i>Nothoscordum borbonicum</i>	onion weed	*	a
Oxalidaceae	<i>Oxalis corniculata</i>		*	c
Papaveraceae	<i>Papaver</i> sp.	poppy	*	a
Urticaceae	<i>Parietaria judaica</i>	asthma weed	*	b
Poaceae	<i>Pennisetum clandestinum</i>	kikuyu grass	*	b
Poaceae	<i>Pennisetum setaceum</i>	fountain grass	*	a
Pittosporaceae	<i>Pittosporum undulatum</i>	sweet pittosporum		a
Brassicaceae	<i>Raphanus raphanistrum</i>	wild radish	*	a
Euphorbiaceae	<i>Ricinus communis</i>	castor oil plant	*	a
Malvaceae	<i>Sida rhombifolia</i>	paddy's lucerne	*	a
Asteraceae	<i>Sonchus oleraceus</i>	common sowthistle	*	a
Strelitziaceae	<i>Strelitzia nicolai</i>	giant bird of paradise	*	a
Myrtaceae	<i>Syzygium paniculatum</i>	magenta lilly pilly	E	a
Aizoaceae	<i>Tetragonia tetragonioides</i>	New Zealand spinach		a
Poaceae	<i>Themeda australis</i>	kangaroo grass		a
Commelinaceae	<i>Tradescantia fluminensis</i>	trad	*	b
Fabaceae	<i>trifolium repens</i>	white clover	*	c
Scrophulariaceae	<i>Veronica arvensis</i>	wall speedwell	*	a
Fabaceae - Faboideae	<i>Vicia sativa</i>	vetch	*	a


2.3.12 Maps for Unmade Carrington Avenue Reserve



Vegetation communities

 Established Planted Area

Figure 7: Vegetation Communities and threatened flora locations - Unmade Carrington Ave Reserve

 Site boundary

Mosman Council

Mosman Flora and Fauna Survey 2021



Job number: PR6939
Date: 30/01/2022



0 4 8 m

GDA 1994 MGA Zone 56
Projection: Transverse Mercator
Datum: GDA 1994
Units: Meter



Figure 8: Native vegetation cover percent - Unmade Carrington Ave Reserve

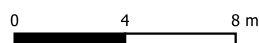
Mosman Council

Mosman Flora and Fauna Survey 2021

 Site boundary
  Native vegetation cover % >90



Job number: PR6939
Date: 30/01/2022



GDA 1994 MGA Zone 56
Projection: Transverse Mercator
Datum: GDA 1994
Units: Meter

Data Sources: © State of New South Wales (Department of Planning, Industry and Environment), 2022; © Ecosure 2022
ECOSURE does not warrant the accuracy or completeness of information displayed in this map. Any person using this map does so at their own risk, and should consider the context of the report that this map supports.
ECOSURE shall bear no responsibility or liability for any errors, faults, defects, or omissions in the information.



Figure 9: Weed density - Unmade Carrington Ave Reserve

Mosman Council

Mosman Flora and Fauna Survey 2021

Site boundary
 Weed density
 <10



Job number: PR6939
Date: 30/01/2022



0 4 8 m

GDA 1994 MGA Zone 56
Projection: Transverse Mercator
Datum: GDA 1994
Units: Meter

Data Sources: © State of New South Wales (Department of Planning, Industry and Environment), 2022; © Ecosure 2022
ECOSURE does not warrant the accuracy or completeness of information displayed in this map. Any person using this map does so at their own risk, and should consider the context of the report that this map supports.
ECOSURE shall bear no responsibility or liability for any errors, faults, defects, or omissions in the information.

2.4 Unmade Cobbittee Street Reserve

2.4.1 General description

Unmade Cobbittee Street Reserve (reserve number 88) is located at the northern end of Cobbittee Street in the east of Mosman LGA. The road reserve occurs on a gentle north-facing slope and includes the Cobbittee Street fill batter at the northern end of Cobbittee Street and the vegetation strip adjacent to Cobbittee Street to the east. For further information regarding geology and soil, see Total Earth Care (2007).

2.4.2 Vegetation communities

Three vegetation communities are recognised in Unmade Cobbittee Street Reserve including Sydney Sandstone Gully Forest, Disturbed Sydney Sandstone Gully Forest, Cleared and Disturbed (Table 25; Figure 10).

Table 25 Vegetation communities in Unmade Cobbittee Street Reserve

Regrowth Sydney Sandstone Gully Forest	
Canopy	<i>Angophora costata</i> (Sydney red gum), <i>Eucalyptus botryoides</i> (bangalay)
Midstorey and understorey	<i>Allocasuarina littoralis</i> (black she-oak), <i>Pittosporum undulatum</i> (sweet pittosporum), <i>Acacia longifolia</i> subsp. <i>longifolia</i> (Sydney golden wattle)
Groundcover	<i>Pteridium esculentum</i> (common bracken), <i>Lomandra longifolia</i> (spiny-headed mat-rush) and <i>Dianella caerulea</i> (blue flax-lily)
Disturbed Sydney Sandstone Gully Forest	
Canopy	<i>Angophora costata</i> (Sydney red gum), <i>Eucalyptus botryoides</i> (bangalay)
Midstorey / understorey	<i>Pittosporum undulatum</i> (sweet pittosporum), <i>Elaeocarpus reticulatus</i> (blueberry ash)
Groundcover	<i>Nephrolepis cordifolia</i> (fishbone fern), <i>Crocasmia</i> × <i>crocosmiiflora</i> (montbretia)
Disturbed	
Canopy	<i>Eucalyptus botryoides</i> (bangalay), <i>Syzygium paniculatum</i> (magenta lilly pilly), <i>Jacaranda mimosifolia</i> (Jacaranda)
Midstorey / understorey	<i>Ficus coronate</i> (sandpaper fig), <i>Syzygium paniculatum</i> (magenta lilly pilly), <i>Tristaniopsis laurina</i> (water gum)
Groundcover	<i>Ehrharta erecta</i> (panic veldtgrass), <i>Dianella caerulea</i> (blue flax-lily), <i>Bidens pilosa</i> (cobblers pegs)

2.4.3 Threatened flora

Previous surveys recorded *Syzygium paniculatum* (magenta lilly pilly) in the reserve (Total Earth Care 2007). Ecosure recorded one individual of *Syzygium paniculatum* (magenta lilly pilly) in this reserve (Figure 10).

2.4.4 Threatened ecological communities

The Native Vegetation of the Sydney Metropolitan Area (OEH 2016c) vegetation mapping did not identify any TECs within Unmade Cobbittee Street Reserve. The current survey did not

detect any vegetation that corresponds to a TEC.

2.4.5 Fauna habitat and fauna

Fauna habitat recorded for Unmade Cobbittee Street Reserve is summarised in Table 26.

Table 26 Summary of fauna habitat in Unmade Cobbittee Street Reserve

Fauna habitat (See Flora and Fauna Assessment, Volume 1 for criteria)

Locality	This road reserve is adjacent to bushland of Sydney Harbour National Park (SHNP) and in close proximity to surrounding bushland reserves including Balmoral Park bushland reserve (53), Lawry Plunkett bushland reserve (35) and surrounding road reserves.
Site specific	Low to high understorey and ground cover along with exotic and native canopy species.
General fauna	Foraging, roosting and nesting potential for common native birds, mammals and reptiles
Threatened fauna	Foraging potential for threatened bat species

Nine species (four birds and two reptile) were detected at this reserve during surveys in December 2021 and January 2022 (Table 27). None of these species are threatened.

Table 27 Fauna species list for Unmade Cobbittee Street Reserve

Class	Family	Scientific Name	Common Name	Status	RR 88
Birds	Meliphagidae	<i>Anthochaera carunculata</i>	red wattlebird		c
Birds	Artamidae	<i>Gymnorhina tibicen</i>	Australian magpie		c
Birds	Maluridae	<i>Malurus cyaneus</i>	superb fairy-wren		c
Birds	Meliphagidae	<i>Manorina melanocephala</i>	noisy miner		c
Birds	Acanthizidae	<i>Sericornis frontalis</i>	white-browed scrubwren		c
Birds	Artamidae	<i>Strepera graculina</i>	pieb currawong		c
Birds	Psittacidae	<i>Trichoglossus haematodus</i>	rainbow lorikeet		c
Reptiles	Agamidae	<i>Intellagama lesueurii lesueurii</i>	eastern water dragon		c
Reptiles	Scincidae	<i>Lampropholis delicata</i>	dark-flecked garden sunskink		c

2.4.6 Weeds

The top five weed species, their densities and total weed cover for each class within Unmade Cobbittee Street Reserve is provided in Table 28. Overall weed cover is shown in Figure 11 and native cover is shown in Figure 12.

Table 28 Weeds within Unmade Cobbittee Street Reserve

Weed Class Density (%)	Scientific name	Common name	Dominant stratum	% Cover
<10	<i>Asparagus aethiopicus</i>	asparagus fern	Lower	3
	<i>Conyza</i> sp.	fleabane	Lower	1
			Total	4
30-69	<i>Nephrolepis cordifolia</i>	fishbone fern	Lower	20
	<i>Crocasmia</i> × <i>crocosmiiflora</i>	montbretia	Lower	10

Weed Class Density (%)	Scientific name	Common name	Dominant stratum	% Cover
	<i>Hedychium gardnerianum</i>	ginger lily	Lower	1
	Other weed species		Lower	1
			Total	32
>70	<i>Ehrharta erecta</i>	panic veldtgrass	Lower	30
	<i>Sida rhombifolia</i>	paddy's lucerne	Lower	15
	<i>Jacaranda mimosifolia</i>	jacaranda	Upper	15
	<i>Senna pendula</i> var. <i>glabrata</i>	senna	Lower	10
				Total

2.4.7 Threats to native plant communities

The main threat to the plant communities within Unmade Cobbittee Street Reserve is:

- garden escapes from surrounding private properties.

2.4.8 Current management practices

Unmade Cobbittee Street Reserve is currently managed under Mosman Council's Bushcare Volunteer Program. A summary of the works to date is shown in Table 29.

Table 29 Bush regeneration and restoration works summary

Bush regeneration and restoration works summary

Weeding	Hand weeding targeting vine, annual and perennial weeds
Planting	Some planting of native shrub and tree species to supplement regeneration

2.4.9 Conservation significance

This site has a medium priority for conservation. Weed abundance in this reserve is varied. Bushland restoration works are still required to maintain low weed abundance throughout the reserve. The vulnerable *Syzygium paniculatum* (magenta lilly pilly) has also been previously recorded in this reserve.

2.4.10 Recommendations

Current bushland management practices should be continued. Prioritised recommendations are as shown in Table 30.

Table 30 Recommended bush regeneration and restoration works

Recommended bush regeneration and restoration works

Priority	Description
1	Continue hand weeding and spot spraying for all noxious and environmental weeds throughout the road reserve.
2	Continue planting of native tree, shrub and groundcover species to supplement regeneration
3	Monitoring the status of the <i>Syzygium paniculatum</i> (magenta lilly pilly) occurring in this road reserve

2.4.11 Flora species list

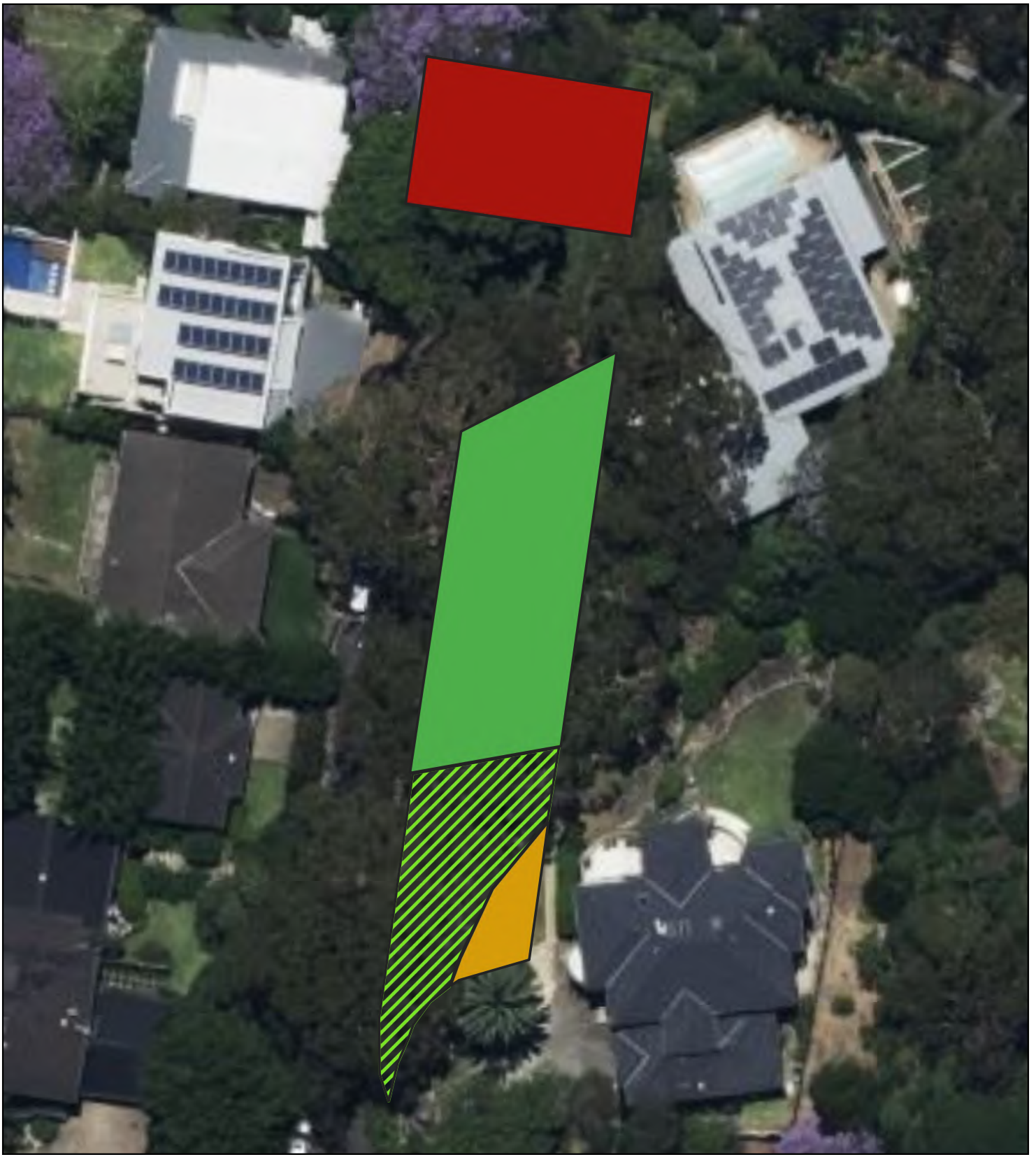
Flora species recorded during current and previous surveys of Unmade Cobbittee Street Reserve are listed in Table 31.

Table 31 Flora species list

Family	Scientific name	Common name	Status	RR88
Fabaceae - Mimosoideae	<i>Acacia floribunda</i>	white sally wattle		a
Fabaceae - Mimosoideae	<i>Acacia longifolia</i> subsp. <i>longifolia</i>	Sydney golden wattle		a
Fabaceae - Mimosoideae	<i>Acacia suaveolens</i>	sweet wattle		a
Casuarinaceae	<i>Allocasuarina littoralis</i>	black she-oak		b
Myrtaceae	<i>Angophera costata</i>	Sydney red gum		c
Asparagoides	<i>Asparagus aethiopicus</i>	asparagus fern	WoNS	c
Asteraceae	<i>Bidens pilosa</i>	cobblers pegs	*	a
Myrtaceae	<i>Calistemon citrinus</i>	crimson bottlebrush		c
Caryophyllaceae	<i>Cerastium glomeratum</i>	mouse-ear chickweed	*	a
Commelinaceae	<i>Commelina cyanea</i>	scurvy weed		b
Asteraceae	<i>Conyza</i> sp.	fleabane	*	b
Asteraceae	<i>Crassocephalum crepidioides</i>	thickhead	*	a
Iridaceae	<i>Crocoshmia</i> × <i>crocoshmiiflora</i>	montbretia	*	c
Apiaceae	<i>Cyclospermum leptophyllum</i>	slender celery	*	a
Cyperaceae	<i>Cyperus gracilis</i>	slender flat-sedge		a
Dicksoniaceae	<i>Dicksonia antarctica</i>	soft tree-fern		b
Phormiaceae	<i>Dianella caerulea</i>	blue flax-lily		c
Sapindaceae	<i>Dodonaea triquetra</i>	large-leaf hop-bush		a
Poaceae	<i>Ehrharta erecta</i>	panic veldtgrass	*	b
Elaeocarpaceae	<i>Elaeocarpus reticulatus</i>	blueberry ash		b
Myrtaceae	<i>Eucalyptus botryoides</i>	bangalay		b
Euphorbiaceae	<i>Euphorbia peplus</i>	petty spurge	*	a
Asparagaceae	<i>Eustrephus latifolius</i>	wombat berry		c
Moraceae	<i>Ficus coronata</i>	sandpaper fig		c
Fumariaceae	<i>Fumaria officinalis</i>		*	a


Family	Scientific name	Common name	Status	RR88
Proteaceae	<i>Hakea dactyloides</i>	finger hakea		a
Zingiberaceae	<i>Hedychium gardnerianum</i>	ginger lily	*	c
Bignoniaceae	<i>Jacaranda mimosifolia</i>	jacaranda	*	b
Fabaceae - Faboideae	<i>Kennedia rubicunda</i>	dusky coral pea		a
Myrtaceae	<i>Kunzea ambigua</i>	tick bush		b
Lomandraceae	<i>Lomandra longifolia</i>	spiny-headed mat-rush		c
Myrtaceae	<i>Melaleuca linariifolia</i>	flax-leaved paperbark		b
Poaceae	<i>Microlaena stipoides</i> var. <i>stipoides</i>	weeping grass		a
Davalliaceae	<i>Nephrolepis cordifolia</i>	fishbone fern	*	c
Poaceae	<i>Oplismenus aemulus</i>	oplismenus		b
Pittosporaceae	<i>Pittosporum revolutum</i>	wild yellow jasmine		b
Pittosporaceae	<i>Pittosporum undulatum</i>	sweet pittosporum		b
Dennstaedtiaceae	<i>Pteridium esculentum</i>	common bracken		c
Fabaceae - Caesalpinioideae	<i>Senna pendula</i> var. <i>glabrata</i>	senna	*	b
Poaceae	<i>Setaria palmifolia</i>	palm grass	*	c
Malvaceae	<i>Sida rhombifolia</i>	paddy's lucerne	*	b
Solanaceae	<i>Solanum nigrum</i>	black-berry nightshade	*	a
Menispermaceae	<i>Stephania japonica</i> var. <i>discolor</i>	snake vine		a
Myrtaceae	<i>Syzygium paniculatum</i>	magenta lilly pilly	E	b
Myrtaceae	<i>Syzygium smithii</i>	lilly pilly		b
Myrtaceae	<i>Tristaniopsis laurina</i>	water gum		b

2.4.12 Maps for Unmade Cobbittee Street Reserve



- | | |
|--|---|
| Vegetation communities |  Established Planted Area |
|  Cleared and Disturbed |  Open Space |
|  Disturbed Sydney Sandstone Gully Forest |  Sydney Sandstone Gully Forest |

Figure 10: Vegetation Communities and threatened flora locations - Unmade Cobbittee St Reserve

 Site boundary

Mosman Council

Mosman Flora and Fauna Survey 2021

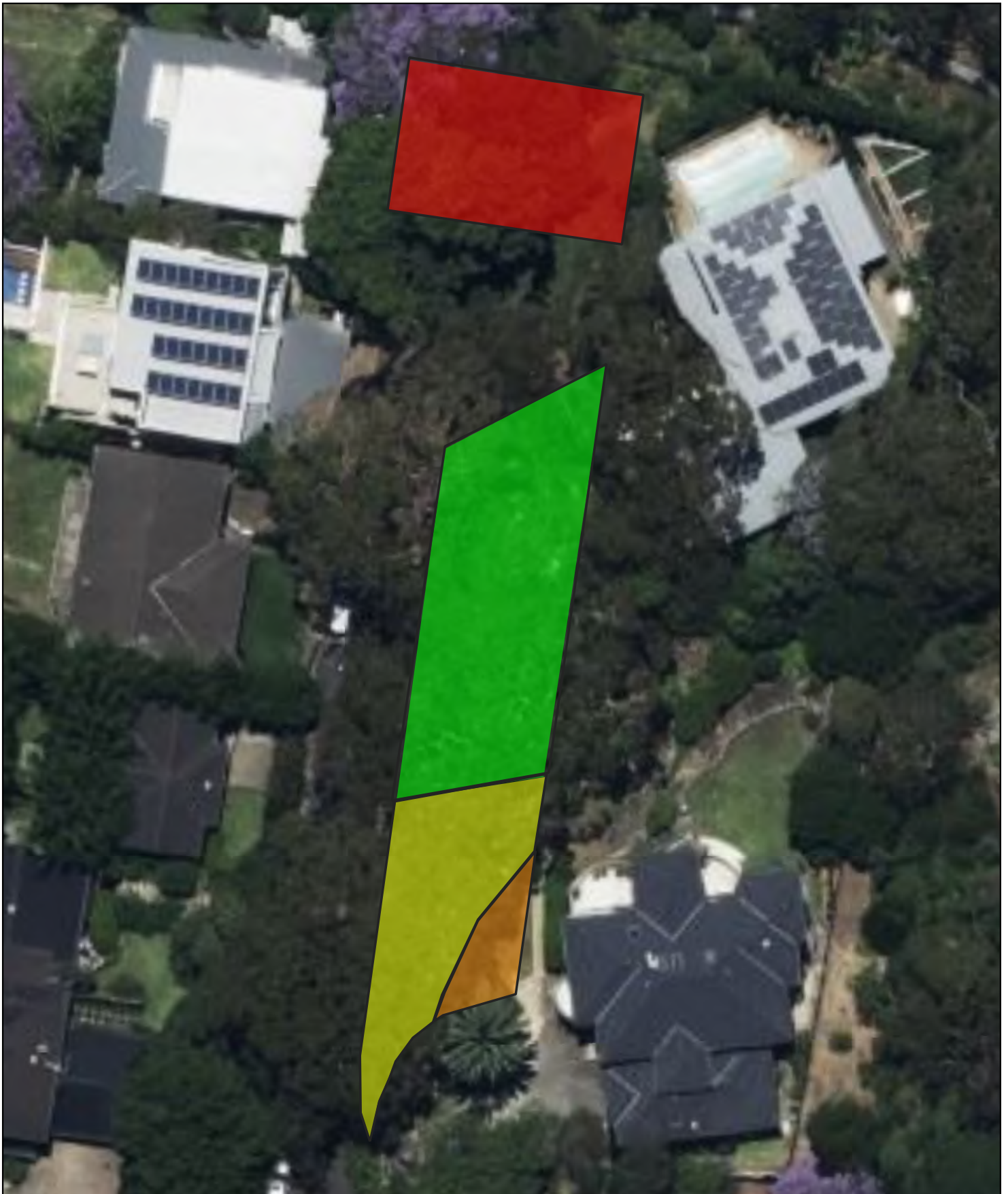
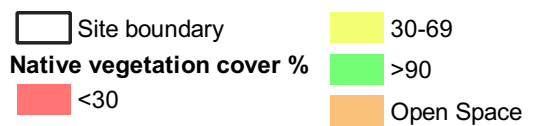


Figure 11: Native vegetation cover percent - Unmade Cobbittee St Reserve

Mosman Council

Mosman Flora and Fauna Survey 2021



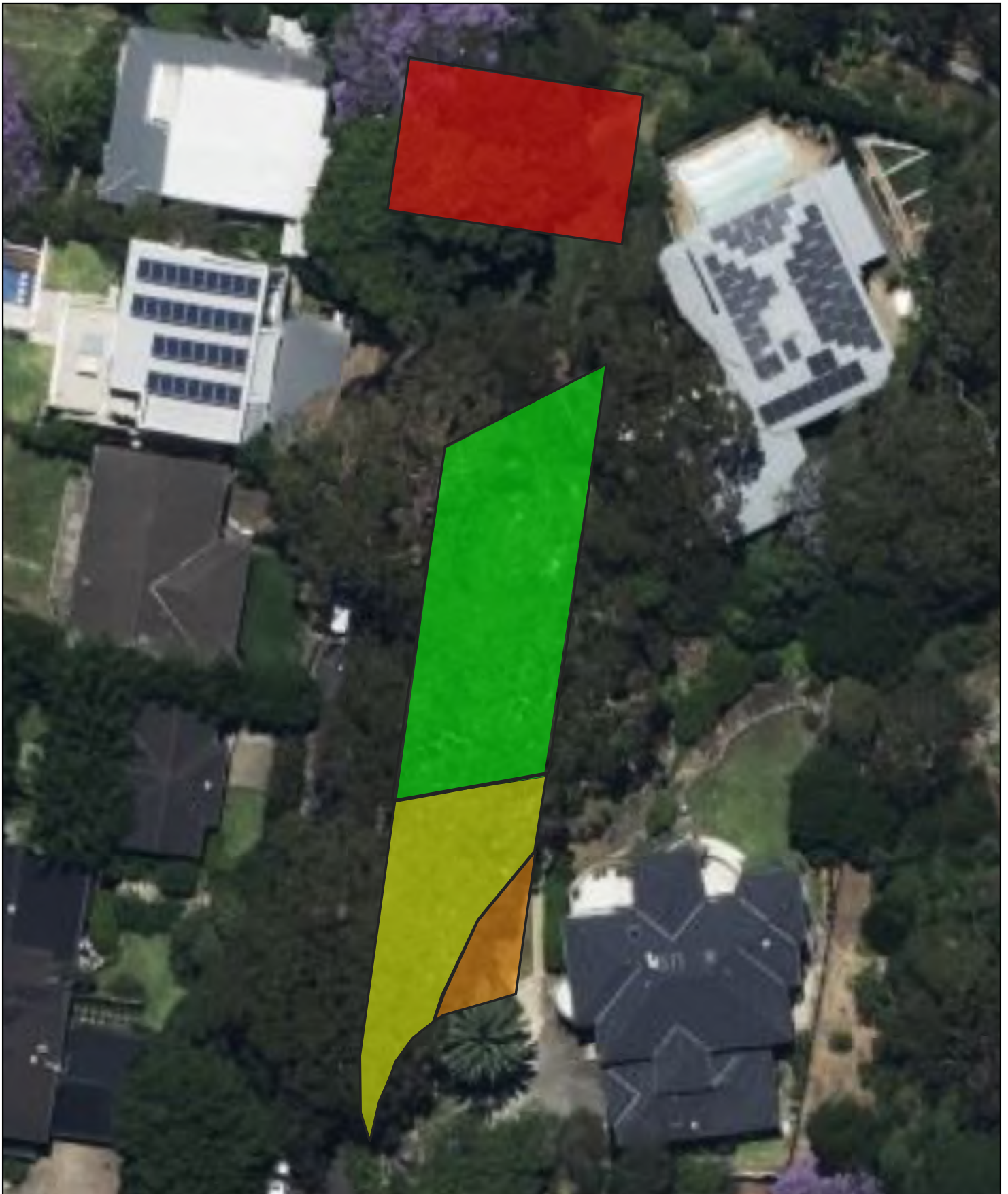
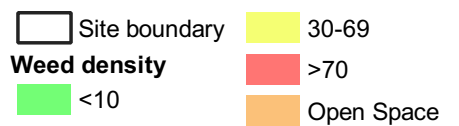


Figure 12: Weed density - Unmade Cobbittee St Reserve

Mosman Council

Mosman Flora and Fauna Survey 2021



2.5 Unmade Crown Road Reserve

2.5.1 General description

Unmade Crown Road Reserve (reserve number 89) is located adjacent to Harnett Park bushland reserve, off Harnett Avenue in the south-west of Mosman LGA. For further information regarding geology and soil, see Total Earth Care (2007).

2.5.2 Vegetation communities

One vegetation community is recognised in Unmade Crown Road Reserve, Established Planted Area (Table 32; Figure 13).

Table 32 Vegetation Communities in Unmade Crown Road Reserve

Established Planted Area

Canopy	<i>Tristaniopsis laurina</i> (water gum), <i>Corymbia maculata</i> (spotted gum), <i>Angophora costata</i> (Sydney red gum), <i>Celtis sinensis</i> (Japanese hackberry), <i>Brachychiton acerifolius</i> (flame tree)
Midstorey	<i>Archontophoenix cunninghamiana</i> (Bangalow palm), <i>Cyathea cooperi</i> (straw treefern) and <i>Pittosporum undulatum</i> (sweet pittosporum)
Understorey	<i>Agapanthus praecox</i> subsp. <i>orientalis</i> (African lily), <i>Clivia minata</i> (clivia), <i>Abelia x grandiflora</i> (abelia) and <i>Homalanthus populifolius</i> (bleeding heart)
Groundcover	<i>Nephrolepis cordifolia</i> (fishbone fern), <i>Viola hederacea</i> (native violet) <i>Dianella caerulea</i> (blue flax-lily), <i>Commelina cyanea</i> (scurvy weed) and <i>Ehrharta erecta</i> (panic veldtgrass)

2.5.3 Threatened flora

No threatened flora species have been recorded in this road reserve.

2.5.4 Threatened ecological communities

The Native Vegetation of the Sydney Metropolitan Area (OEH 2016c) vegetation mapping did not identify any TECs within Unmade Crown Road Reserve. The current survey did not detect any vegetation that corresponds to a TEC.

2.5.5 Fauna habitat and fauna

Fauna habitat recorded for Unmade Crown Road Reserve is summarised in Table 33.

Table 33 Fauna habitat summary of Unmade Crown Road Reserve

Fauna habitat

Locality	The reserve occurs adjacent to the eastern section of Harnett Park bushland reserve (183) and is in close proximity to Reid Park bushland reserve (46)
Site specific	Moderate cover of mixed native and exotic shrubs and trees over the majority of the reserve.
General fauna	Foraging, roosting and sheltering potential for common birds, mammals and reptiles. See Harnett Park bushland reserve (183) for more information

Two species (one bird and one reptile) were detected at this reserve during surveys in December 2021 and January 2022 (Table 34). None of these species are threatened.

Table 34 Fauna species list for Unmade Crown Road Reserve

Class	Family	Scientific Name	Common Name	Status	RR 89
Birds	Alcedinidae	<i>Dacelo novaeguinea</i>	laughing kookaburra		c
Reptiles	Scincidae	<i>Lampropholis guichenoti</i>	pale-flecked garden sunskink		c

2.5.6 Weeds

The top five weed species and their densities within the native plant community are listed in Table 35. Overall weed cover is shown in Figure 14 and native cover is shown in Figure 15.

Table 35 Weeds within Unmade Crown Road Reserve

Weed Class Density (%)	Scientific name	Common name	Dominant stratum	% Cover
30-69	<i>Abelia x grandiflora</i>	abelia	Lower	20
	<i>Crocasmia x crocosmiiflora</i>	montbretia	Lower	5
	<i>Ehrharta erecta</i>	panic veldtgrass	Lower	5
	Other weed species		Lower	10
			Total	40
>70	<i>Nephrolepis cordifolia</i>	fishbone fern	Lower	20
	<i>Agapanthus praecox</i> subsp. <i>orientalis</i>	African lily	Lower	20
	<i>Hibiscus</i> sp.	hibiscus	Lower	15
	<i>Senna pendula</i> var. <i>glabrata</i>	senna	Lower	10
	Other weed species			10
		Total	75	

2.5.7 Threats to native plant communities

The vegetation within Unmade Crown Road Reserve generally comprises of planted exotics with canopy natives. Current threats to the plant communities within Unmade Crown Road Reserve include:

- spread of exotic horticultural plantings within the reserve
- stormwater runoff and the associated effects of erosion, sedimentation, nutrification and weed propagule dispersal
- garden escapes from surrounding private properties.

2.5.8 Current management practices

Unmade Crown Road Reserve is not currently managed under Mosman Council’s Bushland

Restoration Contracts 2012 - 2022. A summary of the works to date is shown in Table 36.

Table 36 Bush regeneration and restoration works summary

Bush regeneration and restoration works summary

Weeding	Spot spraying of annual and perennial weed species
Planting	Scattered plantings to supplement native vegetation

2.5.9 Conservation significance

This site has a low priority for conservation. Restoration works have maintained low weed abundance in the native vegetation of this reserve, however much of the reserve has planted exotics. Continued bush regeneration works will maintain and improve the condition of the native vegetation within the road reserve. This reserve also forms part of Harnett Park Bushland reserve and is therefore important for connectivity.

2.5.10 Recommendations

Bushland management practices for Unmade Crown Road Reserve should be recommenced. Prioritised recommendations are shown in Table 37.

Table 37 Recommended bush regeneration and restoration works

Recommended bush regeneration and restoration works

Priority	Description
1	Continue hand weeding and spot spraying for all noxious and environmental weeds throughout the road reserve
2	Removal of horticultural plantings and restoration of open space with native vegetation

2.5.11 Flora species list

Flora species recorded during current and previous surveys of Unmade Crown Road Reserve are listed in Table 38.

Table 38 Flora species list

Family	Scientific name	Common name	Status	RR89
Caprifoliaceae	<i>Abelia x grandiflora</i>	abelia	*	b
Fabaceae - Mimosoideae	<i>Acacia binervia</i>	coast myall		a
Fabaceae - Mimosoideae	<i>Acacia elata</i>	mountain cedar wattle	ni	a
Fabaceae - Mimosoideae	<i>Acacia longifolia</i> subsp. <i>longifolia</i>	Sydney golden wattle		a
Fabaceae - Mimosoideae	<i>Acacia parramattensis</i>	Sydney green wattle		a
Myrtaceae	<i>Acmena smithii</i>	lilly pilly		a
Alliaceae	<i>Agapanthus praecox</i> subsp. <i>orientalis</i>	African lily	*	c
Agavaceae	<i>Agave americana</i>	century plant	*	a
Myrtaceae	<i>Angophora costata</i>	Sydney red gum		b

Family	Scientific name	Common name	Status	RR89
Areaceae	<i>Archontophoenix cunninghamiana</i>	Bangalow palm		b
Asparagaceae	<i>Asparagus aethiopicus</i>	asparagus fern	WoNS	a
Proteaceae	<i>Banksia serrata</i>	old-man banksia		a
Sterculiaceae	<i>Brachychiton acerifolius</i>	flame tree		b
Asteraceae	<i>Bidens pilosa</i>	cobblers pegs	*	c
Cupressaceae	<i>Callitris rhomboidea</i>	Port Jackson pine		a
Sapindaceae	<i>Cardiospermum grandiflorum</i>	balloon vine	*	a
Cannabaceae	<i>Celtis sinensis</i>	Japanese hackberry	*	c
Anthericaceae	<i>Chlorophytum comosum</i>	spider plant	*	a
Lauraceae	<i>Cinnamomum camphora</i>	camphor laurel	*	b
Asteraceae	<i>Cirsium vulgare</i>	spear thistle	*	c
Amaryllidaceae	<i>Clivia minata</i>	clivia	*	c
Commelinaceae	<i>Commelina cyanea</i>	scurvy weed		b
Myrtaceae	<i>Corymbia maculata</i>	spotted gum		c
Cyatheaceae	<i>Cyathea cooperi</i>	straw treefern		b
Cyperaceae	<i>Cyperus polystachyos</i>			a
Phormiaceae	<i>Dianella caerulea</i>	blue flax-lily		c
Elaeocarpaceae	<i>Elaeocarpus reticulatus</i>	blueberry ash		a
Poaceae	<i>Ehrharta erecta</i>	panic veldtgrass	*	c
Fabaceae - Faboideae	<i>Erythrina sykesii</i>	coral tree	*	a
Myrtaceae	<i>Eucalyptus botryoides</i>	bangalay		b
Geraniaceae	<i>Geranium homeanum</i>	native geranium		a
Euphorbiaceae	<i>Glochidion ferdinandi</i> var. <i>ferdinandi</i>	cheese tree		a
Proteaceae	<i>Grevillea linearifolia</i>	linear-leaf grevillea		a
Zingiberaceae	<i>Hedychium gardnerianum</i>	ginger lily	*	a
Malvaceae	<i>Hibiscus</i> sp.	hibiscus	*	c
Euphorbiaceae	<i>Homalanthus populifolius</i>	bleeding heart		b
Convolvulaceae	<i>Ipomoea indica</i>	morning glory	*	a
Verbenaceae	<i>Lantana camara</i>	lantana	WoNS	a
Oleaceae	<i>Ligustrum lucidum</i>	large leaved privet	*	b
Oleaceae	<i>Ligustrum sinense</i>	small leaved privet	*	a
Poaceae	<i>Microlaena stipoides</i> var. <i>stipoides</i>	weeping grass		a
Araceae	<i>Monstera deliciosa</i>	fruit salad plant	*	b
Musaceae	<i>Musa</i> sp.	banana	*	a
Davalliaceae	<i>Nephrolepis cordifolia</i>	fishbone fern	ni	b
Poaceae	<i>Oplismenus aemulus</i>	oplismenus		b
Urticaceae	<i>Parietaria judaica</i>	asthma weed	*	b
Plantaginaceae	<i>Plantago lanceolata</i>	lamb's tongues	*	c
Poaceae	<i>Poa affinis</i>			b

Family	Scientific name	Common name	Status	RR89
Pteridaceae	<i>Pteris tremula</i>	tender brake		b
Fabaceae - Caesalpinioideae	<i>Senna pendula</i> var. <i>glabrata</i>		*	c
Solanaceae	<i>Solanum mauritianum</i>	wild tobacco	*	a
Arecaceae	<i>Syagrus romanzoffiana</i>	cocos palm	*	c
Asteraceae	<i>Taraxacum officinale</i>	dandelion	*	c
Commelinaceae	<i>Tradescantia fluminensis</i>	trad	*	a
Myrtaceae	<i>Tristaniopsis laurina</i>	water gum		c
Tropaeolaceae	<i>Tropaeolum majus</i>	nasturtium	*	a
Violaceae	<i>Viola hederacea</i>	native violet		c

2.5.12 Maps for Unmade Crown Road Reserve



Vegetation communities

- Open Space
- Established Planted Area
- Regrowth Sydney Sandstone Gully Forest

Site boundary

Figure 13: Vegetation Communities and threatened flora locations - Unmade Crown Road Reserve

Mosman Council

Mosman Flora and Fauna Survey 2021



Figure 14: Native vegetation cover percent - Unmade Crown Road Reserve

Mosman Council

Mosman Flora and Fauna Survey 2021

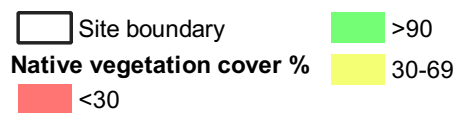




Figure 15: Weed density - Unmade Crown Road Reserve

Mosman Council

Mosman Flora and Fauna Survey 2021

Site boundary

Weed density

<10

>70

30-69

2.6 Unmade Government Road Reserve

2.6.1 General description

Unmade Government Road Reserve (reserve number 98) is located in between the northern end of Government Road and the southern end of Marsala Street, and to the south of Quakers Hat Park (64) in the north of Mosman LGA. It occurs on a broad north-east-facing slope. For further information regarding geology and soil, see Total Earth Care (2007).

2.6.2 Vegetation communities

One vegetation community is recognised in Unmade Government Road Reserve, Regrowth Sydney Sandstone Gully Forest (Table 39; Figure 16).

Table 39 Vegetation communities in Unmade Government Road Reserve.

Regrowth Sydney Sandstone Gully Forest

Canopy	<i>Eucalyptus botryoides</i> (bangalay) and <i>Angophora costata</i> (Sydney red gum).
Midstorey	<i>Banksia integrifolia</i> subsp. <i>integrifolia</i> (coast banksia), <i>Elaeocarpus reticulatus</i> (blueberry ash), <i>Pittosporum undulatum</i> (sweet pittosporum), <i>callistemon salignus</i> (crimson bottlebrush).
Understorey	<i>Cyathea cooperi</i> (straw treefern), <i>Lantana camara</i> (lantana).
Groundcover	<i>Pteridium esculentum</i> (common bracken), <i>Anredera cordifolia</i> (madeira vine), <i>Lomandra longifolia</i> (spiny-headed mat-rush) and <i>Ehrharta erecta</i> (panic veldtgrass).

2.6.3 Threatened flora

Previous surveys recorded one seedling of *Acacia terminalis* subsp. *eastern Sydney* (sunshine wattle) in the reserve (Total Earth Care 2007). Ecosure did not record *Acacia terminalis* subsp. *eastern Sydney* during the field surveys.

2.6.4 Threatened ecological communities

The Native Vegetation of the Sydney Metropolitan Area (OEH 2016c) vegetation mapping did not identify any TECs within Unmade Government Road Reserve. The current survey did not detect any vegetation that corresponds to a TEC.

2.6.5 Fauna habitat and fauna

Fauna habitat recorded for Unmade Government Road Reserve is summarised in Table 40.

Table 40 Fauna habitat summary of Unmade Government Road Reserve

Fauna habitat

Locality	This road reserve has extended vegetation to the north and south, and is in close proximity to Quakers Hat Park bushland reserve (64) which is to the north.
Site specific	Moderate to dense cover of mixed native and introduced vegetation over the majority of the reserve.

Fauna habitat

General fauna	Foraging, roosting and nesting potential for common native birds, mammals and reptiles
Threatened fauna	Foraging potential for threatened bat species

Seven species (four bird, one mammal and two reptiles) were detected at this reserve during surveys in December 2021 and January 2022 (Table 41). None of these species are threatened.

Table 41 Fauna species list for Unmade Government Road Reserve

Class	Family	Scientific Name	Common Name	Status	RR 98
Birds	Corvidae	<i>Corvus coronoides</i>	Australian raven		c
Birds	Artamidae	<i>Cracticus torquatus</i>	grey butcherbird		c
Birds	Meliphagidae	<i>Manorina melanocephala</i>	noisy miner		c
Birds	Psittacidae	<i>Trichoglossus haematodus</i>	rainbow lorikeet		c
Mammals	Pseudocheiridae	<i>Pseudocheirus peregrinus</i>	common ringtail possum		c
Reptiles	Scincidae	<i>Eulamprus quoyii</i>	eastern water-skink		c
Reptiles	Scincidae	<i>Lampropholis guichenoti</i>	pale-flecked garden sunskink		c

2.6.6 Weeds

The top five weed species and their densities within Unmade Government Road Reserve are listed in Table 42. Overall weed cover is shown in Figure 17 and native cover is shown in Figure 18.

Table 42 Weeds within Unmade Government Road Reserve

Weed Class Density (%)	Scientific name	Common name	Dominant stratum	% Cover
30-69	<i>Anredera cordifolia</i>	madeira vine	Lower	15
	<i>Ageratina adenophora</i>	crofton weed	Lower	10
	<i>Acetosa sagittata</i>	turkey rhubarb	Lower	5
	<i>Lantana camara</i>	lantana	Lower	5
	<i>Solanum nigrum</i>	blackberry nightshade		5
				Total

2.6.7 Threats to native plant communities

The main threats to the plant communities within Unmade Government Road Reserve include:

- stormwater runoff and the associated effects of erosion, sedimentation, nutrification and weed propagule dispersal
- garden escapes from surrounding private properties.

2.6.8 Current management practices

Unmade Government Road Reserve is currently managed under Mosman Council's Bushcare Volunteer Program with supplementary works carried out by bushland contractors. A summary of the works to date is shown in Table 43.

Table 43 Bush regeneration and restoration works summary

Bush regeneration and restoration works summary	
Weeding	<ul style="list-style-type: none"> · Primary weeding targeting noxious, woody and vine weeds · Secondary and maintenance weeding of noxious, woody and vine weed regrowth
Planting	<ul style="list-style-type: none"> · Scattered plantings to supplement existing native vegetation and regeneration

2.6.9 Conservation significance

This site has a medium priority for conservation. This reserve has good connectivity with bushland north and potentially Quakers Hat Park. The vegetation has good structure and is suitable fauna habitat. The abundance of weeds is similar to previous surveys (Total Earth Care 2007), however the composition of weeds has changed considerably. Although improvements have been made with regards to weed presence, bushland restoration works is still required to reduced weed abundance throughout the reserve.

2.6.10 Recommendations

Current bushland management practices should be continued. Prioritised recommendations are shown in Table 44.

Table 44 Recommended bush regeneration and restoration works

Recommended bush regeneration and restoration works	
Priority	Description
1	Continue hand weeding and spot spraying for all noxious and environmental weeds throughout the road reserve.
2	Continue planting of native vegetation to supplement regeneration
3	Monitor the status of <i>Acacia terminalis</i> subsp. <i>eastern Sydney</i> (sunshine wattle)
4	Consider ecological or hazard reduction burns for potential presence of <i>Acacia terminalis</i> subsp. <i>eastern Sydney</i> (sunshine wattle) in the seedbank.

2.6.11 Flora species list

Flora species recorded during current and previous surveys of Unmade Government Road Reserve are listed in Table 45.

Table 45 Flora species list

Family	Scientific name	Common name	Status	RR98
Fabaceae - Mimosoideae	<i>Acacia longifolia</i> subsp. <i>longifolia</i>	Sydney golden wattle		a
Fabaceae - Mimosoideae	<i>Acacia parramattensis</i>	Sydney green wattle		a
Fabaceae - Mimosoideae	<i>Acacia suaveolens</i>	sweet wattle		a

Family	Scientific name	Common name	Status	RR98
Fabaceae - Mimosoideae	<i>Acacia ulicifolia</i>	prickly Moses		a
Polygonaceae	<i>Acetosa sagittata</i>	turkey rhubarb	*	b
Adiantaceae	<i>Adiantum aethiopicum</i>	common maidenhair		a
Asteraceae	<i>Ageratina adenophora</i>	crofton weed	*	b
Casuarinaceae	<i>Allocasuarina littoralis</i>	black she-oak		a
Asteraceae	<i>Ambrosia artemisiifolia</i>	annual ragweed	*	c
Myrtaceae	<i>Angophora costata</i>	Sydney red gum		b
Basellaceae	<i>Anredera cordifolia</i>	madeira vine	WoNS	b
Apocynaceae	<i>Araujia sericifera</i>	moth vine	*	a
Asparagaceae	<i>Asparagus aethiopicus</i>	asparagus fern	WoNS	b
Aspleniaceae	<i>Asplenium australasicum</i>	birds nest fern		c
Proteaceae	<i>Banksia integrifolia</i> subsp. <i>integrifolia</i>	coast banksia		c
Proteaceae	<i>Banksia spinulosa</i> subsp. <i>spinulosa</i>	hairpin banksia		a
Asteraceae	<i>Bidens pilosa</i>	cobblers pegs	*	b
Sterculiaceae	<i>Brachychiton acerifolius</i>	flame tree		b
Myrtaceae	<i>Callistemon citrinus</i>	crimson bottlebrush		c
Cupressaceae	<i>Callitris rhomboidea</i>	Port Jackson Pine		c
Cannaceae	<i>Canna indica</i>	tous-les-mois arrowroot	*	b
Lauraceae	<i>Cinnamomum camphora</i>	camphor laurel	*	b
Vitaceae	<i>Cissus antarctica</i>	kangaroo vine		c
Commelinaceae	<i>Commelina cyanea</i>	scurvy weed		b
Asteraceae	<i>Conyza</i> sp.	fleabane	*	b
Asteraceae	<i>Crassocephalum crepidioides</i>	thickhead	*	a
Cyatheaceae	<i>Cyathea cooperi</i>	straw treefern		b
Poaceae	<i>Ehrharta erecta</i>	panic veldtgrass	*	b
Elaeocarpaceae	<i>Elaeocarpus reticulatus</i>	blueberry ash		b
Malaceae	<i>Eriobotrya japonica</i>	loquat	*	a
Myrtaceae	<i>Eucalyptus botryoides</i>	bangalay		b
Myrtaceae	<i>Eucalyptus piperita</i>	Sydney peppermint		a
Myrtaceae	<i>Eucalyptus</i> sp.			a
Euphorbiaceae	<i>Euphorbia peplus</i>	petty spurge	*	a
Luzuriagaceae	<i>Eustrephus latifolius</i>	wombat berry		c
Fumariaceae	<i>Fumaria officinalis</i>		*	a
Asteraceae	<i>Galinsoga parviflora</i>	potato weed	*	a
Luzuriagaceae	<i>Geitonoplesium cymosum</i>	scrambling lily		a
Euphorbiaceae	<i>Glochidion ferdinandi</i> var. <i>ferdinandi</i>	cheese tree		b
Fabaceae - Faboideae	<i>Hardenbergia violacea</i>	purple coral pea		b
Araliaceae	<i>Hedera helix</i>	English ivy	*	a
Zingiberaceae	<i>Hedychium gardnerianum</i>	ginger lily	*	a

Family	Scientific name	Common name	Status	RR98
Euphorbiaceae	<i>Homalanthus populifolius</i>	bleeding heart		a
Convolvulaceae	<i>Ipomoea indica</i>	morning glory	*	a
Verbenaceae	<i>Lantana camara</i>	lantana	WoNS	b
Myrtaceae	<i>Leptospermum laevigatum</i>	coast teatree		a
Oleaceae	<i>Ligustrum lucidum</i>	large leaved privet	*	a
Oleaceae	<i>Ligustrum sinense</i>	small leaved privet	*	b
Lomandraceae	<i>Lomandra longifolia</i>	spiny-headed mat-rush		b
Malvaceae	<i>Malva parviflora</i>	cheeseweed	*	c
Myrtaceae	<i>Melaleuca armillaris</i>	bracelet honey-myrtle		a
Myrtaceae	<i>Melaleuca quinquenervia</i>	broad-leaved paperbark		a
Davalliaceae	<i>Nephrolepis cordifolia</i>	fishbone fern	ni	b
Alliaceae	<i>Nothoscordum borbonicum</i>	onion weed	*	a
Ochnaceae	<i>Ochna serrulata</i>	mickey mouse plant	*	a
Oleaceae	<i>Olea europaea</i> subsp. <i>cuspidata</i>	olive	*	b
Poaceae	<i>Oplismenus imbecillus</i>	oplismenus		b
Urticaceae	<i>Parietaria judaica</i>	asthma weed	*	b
Pittosporaceae	<i>Pittosporum undulatum</i>	sweet pittosporum		b
Rubiaceae	<i>Pomax umbellata</i>	pomax		a
Dennstaedtiaceae	<i>Pteridium esculentum</i>	common bracken		b
Euphorbiaceae	<i>Ricinus communis</i>	castor oil plant	*	b
Crassulaceae	<i>Sedum</i> sp.	stonecrop	*	a
Fabaceae - Caesalpinioideae	<i>Senna pendula</i> var. <i>glabrata</i>		*	a
Smilacaceae	<i>Smilax glycyphylla</i>	sweet sarsaparilla		b
Solanaceae	<i>Solanum nigrum</i>	blackberry nightshade	*	c
Myrtaceae	<i>Syzygium australe</i>	bush cherry		c
Poaceae	<i>Themeda australis</i>	kangaroo grass		a
Commelinaceae	<i>Tradescantia fluminensis</i>	trad	*	b
Verbenaceae	<i>Verbena bonariensis</i>	purpletop	*	c
Agavaceae	<i>Yucca aloifolia</i>	Spanish bayonet	*	c


2.6.12 Maps for Unmade Government Road Reserve



Vegetation communities

 Regrowth Sydney Sandstone Gully Forest

Figure 16: Vegetation Communities and threatened flora locations - Unmade Government Rd Reserve

 Site boundary

Mosman Council

Mosman Flora and Fauna Survey 2021





Figure 17: Native vegetation cover percent - Unmade Government Rd Reserve

Mosman Council

Mosman Flora and Fauna Survey 2021

 Site boundary
  Native vegetation cover % 70-89



Job number: PR6939
Date: 30/01/2022



0 4 8 m

GDA 1994 MGA Zone 56
Projection: Transverse Mercator
Datum: GDA 1994
Units: Meter

Data Sources: © State of New South Wales (Department of Planning, Industry and Environment), 2022; © Ecosure 2022
ECOSURE does not warrant the accuracy or completeness of information displayed in this map. Any person using this map does so at their own risk, and should consider the context of the report that this map supports.
ECOSURE shall bear no responsibility or liability for any errors, faults, defects, or omissions in the information.



Figure 18: Weed density - Unmade Government Rd Reserve

Mosman Council

Mosman Flora and Fauna Survey 2021

Site boundary
 Weed density
 10-29



2.7 Unmade Grecia Lane Reserve (West)

2.7.1 General description

Unmade Grecia Lane Reserve (West) (reserve number 100) is located at the eastern end of James Street and off McLean Crescent, north of Rosherville Reserve in the north-east of Mosman LGA. The road reserve occurs on a moderate east-facing slope with an access track to private properties. For further information regarding geology and soil, see Total Earth Care (2007).

2.7.2 Vegetation communities

One vegetation community is recognised in Unmade Grecia Lane Reserve (West), Disturbed Sydney Sandstone Gully Forest (Table 46; Figure 19).

Table 46 Vegetation communities in Unmade Grecia Lane Reserve (West)

Disturbed Sydney Sandstone Gully Forest

Canopy	<i>Angophora costata</i> (Sydney red gum), <i>Cyathea australis</i> (rough tree fern), <i>Grevillea robusta</i> (silky oak)
Midstorey	<i>Cyathea cooperi</i> (straw tree fern), <i>Strelitzia nicolai</i> (giant bird of paradise), <i>Syagrus romanzoffiana</i> (cocos palm), <i>Ficus rubiginosa</i> (Port Jackson fig), <i>Melaleuca quinquenervia</i> (broad-leaved paperbark), <i>Phyllostachys aurea</i> (fishpole bamboo)
Understorey	<i>Monstera deliciosa</i> (fruit salad plant), <i>Cestrum nocturnum</i> (night-blooming jasmine)
Groundcover	<i>Tradescantia fluminensis</i> (trad), <i>Setaria palmifolia</i> (palm grass), <i>Nephrolepis cordifolia</i> (fishbone fern)

2.7.3 Threatened flora

No threatened flora have been recorded in this road reserve.

2.7.4 Threatened ecological communities

The Native Vegetation of the Sydney Metropolitan Area (OEH 2016c) vegetation mapping did not identify any TECs within Unmade Grecia Lane Reserve (West). The current survey did not detect any vegetation that corresponds to a TEC.

2.7.5 Fauna habitat and fauna

Fauna habitat recorded for Unmade Grecia Lane Reserve (West) is summarised in Table 47.

Table 47 Fauna habitat summary of Unmade Grecia Lane Reserve (West)

Fauna habitat summary

Locality	Adjacent to Rosherville Reserve (48) and in relatively close proximity to Chinamans Beach Dunes (55) and Unnamed Reserve (Rosherville) (69).
Site specific	Broken canopy of native and introduced species, and good midstorey, understorey and ground cover throughout the reserve.

Fauna habitat summary

General fauna	Foraging, roosting and nesting potential for common native birds, mammals and reptiles with goof fauna connectivity with bushland reserves.
---------------	---

Seven species (two bird, two mammal and three reptile) were detected at this reserve during surveys in December 2021 and January 2022 (Table 48). None of these species are threatened.

Table 48 Fauna species list for Unmade Grecia Lane Reserve (West)

Class	Family	Scientific Name	Common Name	Status	RR 100
Birds	Meliphagidae	<i>Manorina melanocephala</i>	noisy miner		c
Birds	Acanthizidae	<i>Sericornis frontalis</i>	white-browed scrubwren		c
Mammals	Pseudocheiridae	<i>Pseudocheirus peregrinus</i>	common ringtail possum		c
Mammals	Phalangeridae	<i>Trichosurus vulpecula</i>	common brushtail possum		c
Reptiles	Scincidae	<i>Eulamprus quoyii</i>	eastern water-skink		c
Reptiles	Scincidae	<i>Lampropholis delicata</i>	dark-flecked garden sunskink		c
Reptiles	Scincidae	<i>Lampropholis guichenoti</i>	pale-flecked garden sunskink		c

2.7.6 Weeds

The top five weed species and their densities within Unmade Grecia Lane Reserve (West) are listed in Table 49. Overall weed cover is shown in Figure 20 and native cover is shown in Figure 21.

Table 49 Weeds within Unmade Grecia Lane Reserve (West)

Weed Class Density (%)	Scientific name	Common name	Dominant stratum	% Cover
>70	<i>Nephrolepis cordifolia</i>	fishbone fern	Lower	15
	<i>Tradescantia fluminensis</i>	trad	Lower	15
	<i>Cestrum nocturnum</i>	night-blooming jasmine	Lower	15
	<i>Phyllostachys aurea</i>	fishpole bamboo	Lower	10
	Other weed species			20
			Total	75

2.7.7 Threats to native plant communities

The main threats to the plant communities within Unmade Grecia Lane Reserve (West) include:

- garden escapes from surrounding private properties
- landscaping encroachment
- stormwater runoff and the associated effects of sedimentation and nutrification.

2.7.8 Current management practices

Unmade Grecia Lane Reserve (West) is not currently managed under Mosman Council's Bushland Management Program. A summary of the works to date is shown in Table 50.

Table 50 Bush regeneration and restoration works summary

Bush regeneration and restoration works summary	
Weeding	Some targeting of vine weeds has occurred
Planting	n/a
Ecological/Hazard reduction burns	Pile burns occurred in 2005

2.7.9 Conservation significance

This site has a low priority for conservation. The road reserve is very narrow with edge effect pressure and little connectivity to similar vegetation. Weed abundance in this reserve is high. Successful large-scale bush care works would require cooperation with private landholders abutting the reserve.

2.7.10 Recommendations

Maintain vegetation for fauna connectivity. Prioritised recommendations are shown in Table 51.

Table 51 Recommended bush regeneration and restoration works

Recommended bush regeneration and restoration works	
Priority	Description
1	Hand weeding and spot spraying for all noxious and environmental weeds throughout the road reserve.

2.7.11 Flora species list

Flora species recorded during current and previous surveys of Unmade Grecia Lane Reserve (West) are listed in Table 52.

Table 52 Flora species list

Family	Scientific name	Common name	Status	RR100
Fabaceae - Mimosoideae	<i>Acacia fimbriata</i>	fringed wattle		b
Fabaceae - Mimosoideae	<i>Acacia implexa</i>	hickory wattle		c
Polygonaceae	<i>Acetosa sagittata</i>	turkey rhubarb	*	c
Myrtaceae	<i>Acmena smithii</i>	lilly pilly		b
Alliaceae	<i>Agapanthus praecox</i> subsp. <i>orientalis</i>	African lily	*	c
Asteraceae	<i>Ageratina adenophora</i>	crofton weed	*	c
Myrtaceae	<i>Angophora costata</i>	Sydney red gum		b

Family	Scientific name	Common name	Status	RR100
Basellaceae	<i>Anredera cordifolia</i>	madeira vine	WoNS	b
Asparagaceae	<i>Asparagus aethiopicus</i>	asparagus fern	WoNS	b
Asparagaceae	<i>Asparagus plumosus</i>	climbing asparagus fern	WoNS	b
Aspleciaceae	<i>Asplenium australasicum</i>	birds nest fern		c
Asteraceae	<i>Bidens pilosa</i>	cobblers pegs	*	c
Sterculiaceae	<i>Brachychiton acerifolius</i>	flame tree		b
Myrtaceae	<i>Callistemon</i> sp.	bottlebrush		c
Dicksoniaceae	<i>Calochlaena dubia</i>	soft bracken		b
Sapindaceae	<i>Cardiospermum grandiflorum</i>	balloon vine	*	c
Solanaceae	<i>Cestrum nocturnum</i>	night-blooming jasmine	*	c
Solanaceae	<i>Cestrum parqui</i>	green poisonberry	*	b
Anthericaceae	<i>Chlorophytum comosum</i>	spider plant	*	b
Rutaceae	<i>Citrus</i> sp.	citrus	*	b
Iridaceae	<i>Crocasmia x crocosmiiflora</i>	montbretia	*	c
Cyathaceae	<i>Cyathea australis</i>	rough tree fern		b
Cyathaceae	<i>Cyathea cooperi</i>	straw tree fern		c
Apiaceae	<i>Cyclospermum leptophyllum</i>	slender celery	*	c
Phormiaceae	<i>Dianella caerulea</i>	blue flax-lily		b
Doryanthaceae	<i>Doryanthes excelsa</i>	Gynea lily		b
Arecaceae	<i>Dypsis lutescens</i>	golden cane palm	*	b
Poaceae	<i>Ehrharta erecta</i>	panic veldtgrass	*	b
Luzuriagaceae	<i>Eustrephus latifolius</i>	wombat berry		c
Moraceae	<i>Ficus rubiginosa</i>	Port Jackson fig		b
Proteaceae	<i>Grevillea robusta</i>	silky oak	ni	b
Araliaceae	<i>Hedera</i> sp.	ivy	*	b
Zingiberaceae	<i>Hedychium gardnerianum</i>	ginger lily	*	b
Euphorbiaceae	<i>Homalanthus populifolius</i>	bleeding heart		a
Balsaminaceae	<i>Impatiens walleriana</i>		*	b
Convolvulaceae	<i>Ipomoea indica</i>	morning glory	*	b
Bignoniaceae	<i>Jacaranda mimosifolia</i>	jacaranda	*	b
Oleaceae	<i>Ligustrum lucidum</i>	large leaved privet	*	b
Oleaceae	<i>Ligustrum sinense</i>	small leaved privet	*	b
Lomandraceae	<i>Lomandra longifolia</i>	spiny-headed mat-rush		b
Zamiaceae	<i>Macrozamia</i> sp.	burrawang		b
Myrtaceae	<i>Melaleuca quinquenervia</i>	broad-leaved paperbark		c
Poaceae	<i>Microlaena stipoides</i> var. <i>stipoides</i>	weeping grass		a
Araceae	<i>Monstera deliciosa</i>	fruit salad plant	*	b
Davalliaceae	<i>Nephrolepis cordifolia</i>	fishbone fern	ni	b
Ochnaceae	<i>Ochna serrulata</i>	mickey mouse plant	*	b

Family	Scientific name	Common name	Status	RR100
Urticaceae	<i>Parietaria judaica</i>	asthma weed	*	a
Poaceae	<i>Pennisetum clandestinum</i>	kikuyu grass	*	c
Poaceae	<i>Phyllostachys aurea</i>	fishpole bamboo	*	b
Dennstaedtiaceae	<i>Pteridium esculentum</i>	common bracken		b
Araliaceae	<i>Schefflera actinophylla</i>	umbrella tree	ni	b
Poaceae	<i>Setaria palmifolia</i>	palm grass	*	b
Strelitziaceae	<i>Strelitzia nicolai</i>	giant bird of paradise	*	b
Arecaceae	<i>Syagrus romanzoffiana</i>	cocos palm	*	b
Commelinaceae	<i>Tradescantia fluminensis</i>	trad	*	b
Myrtaceae	<i>Tristaniopsis laurina</i>	water gum		b
Lamiaceae	<i>Westringia fruticosa</i>	coastal rosemary		a
Agavaceae	<i>Yucca aloifolia</i>	Spanish bayonet	*	c

2.7.12 Maps for Unmade Grecia Lane (West)



Vegetation communities

 Disturbed Sydney Sandstone Gully Forest



 Regrowth Sydney Sandstone Gully Forest

Figure 19: Vegetation Communities and threatened flora locations - Unmade Grecia Ln Reserve (West)

 Site boundary

Mosman Council

Mosman Flora and Fauna Survey 2021



Job number: PR6939
Date: 30/01/2022



0 4 8 m

GDA 1994 MGA Zone 56
Projection: Transverse Mercator
Datum: GDA 1994
Units: Meter




Data Sources: © State of New South Wales (Department of Planning, Industry and Environment), 2022; © Ecosure 2022
ECOSURE does not warrant the accuracy or completeness of information displayed in this map. Any person using this map does so at their own risk, and should consider the context of the report that this map supports.
ECOSURE shall bear no responsibility or liability for any errors, faults, defects, or omissions in the information.



Figure 20: Native vegetation cover percent - Unmade Grecia Ln Reserve (West)

Mosman Council

Mosman Flora and Fauna Survey 2021

 Site boundary
 Native vegetation cover %
 <30
 >90



Job number: PR6939
Date: 30/01/2022



0 4 8 m

GDA 1994 MGA Zone 56
Projection: Transverse Mercator
Datum: GDA 1994
Units: Meter

Data Sources: © State of New South Wales (Department of Planning, Industry and Environment), 2022; © Ecosure 2022
ECOSURE does not warrant the accuracy or completeness of information displayed in this map. Any person using this map does so at their own risk, and should consider the context of the report that this map supports.
ECOSURE shall bear no responsibility or liability for any errors, faults, defects, or omissions in the information.

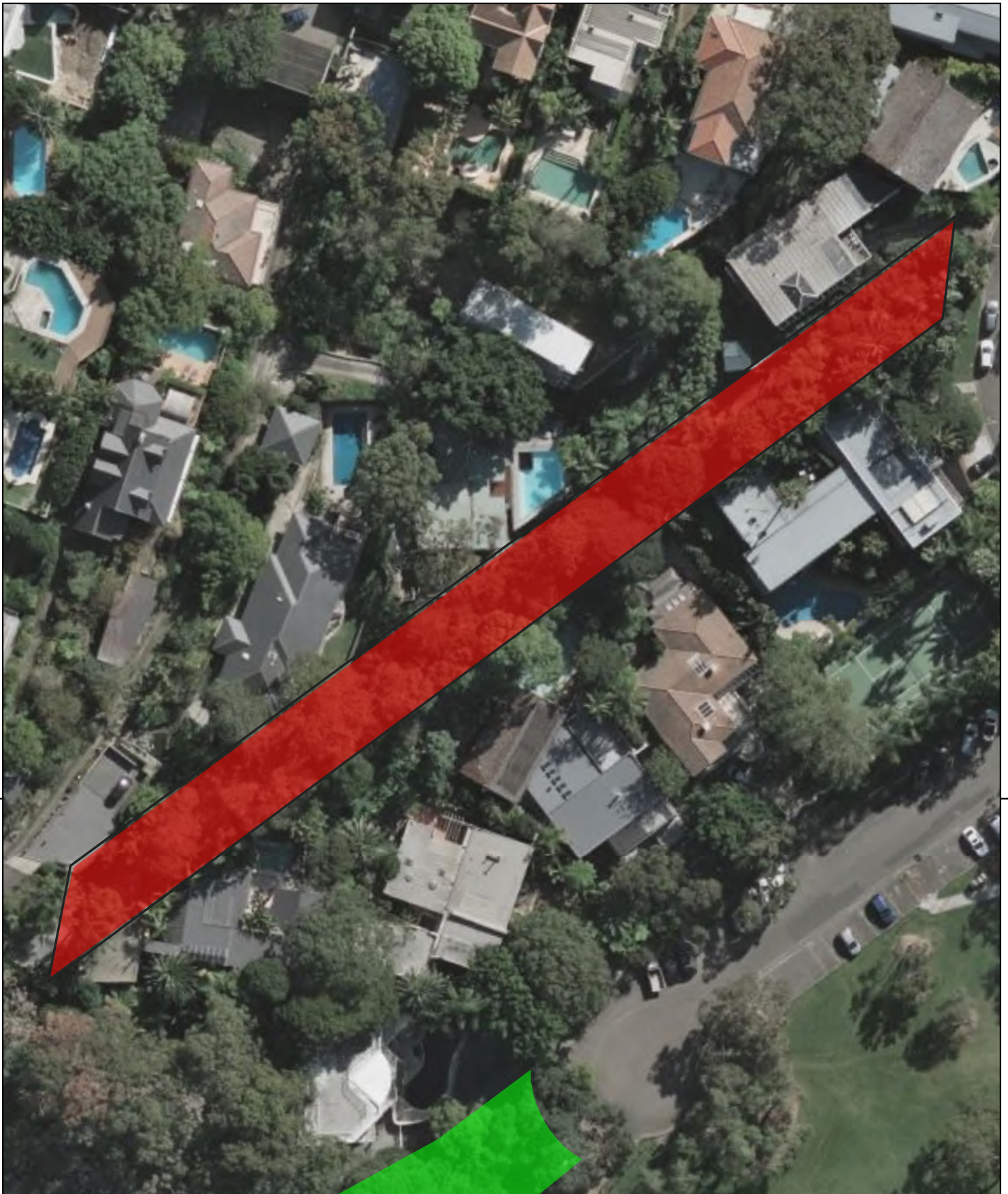


Figure 21: Weed density - Unmade Grecia Ln Reserve (West)

Mosman Council

Mosman Flora and Fauna Survey 2021

Site boundary Weed density

<10

>70



Job number: PR6939
Date: 30/01/2022



0 4 8 m

GDA 1994 MGA Zone 56
Projection: Transverse Mercator
Datum: GDA 1994
Units: Meter

2.8 Unmade Harston Avenue Reserve

2.8.1 General description

Unmade Harston Avenue Reserve (reserve number 104) is located between the southern end of Harston Avenue and Wyong Road in the north-west of Mosman LGA. The road reserve occurs on a steeply north-facing slope with a footpath running along the eastern edge of the reserve. For further information regarding geology and soil, see Total Earth Care (2007).

2.8.2 Vegetation communities

Two vegetation communities are recognised in Unmade Harston Avenue Reserve, Disturbed Sydney Sandstone Gully Forest and Established Planted Area. There is also Open Space within this reserve in the south-west corner (Table 53; Figure 22).

Table 53 Vegetation communities within Unmade Harston Avenue Reserve

Disturbed Sydney Sandstone Gully Forest

Canopy	<i>Eucalyptus botryoides</i> (bangalay), <i>Angophora hispida</i> (dwarf apple), <i>Angophora costata</i> (Sydney red gum)
Midstorey and understorey	<i>Banksia integrifolia</i> subsp. <i>integrifolia</i> (coast banksia), <i>Melaleuca styphelioides</i> (prickly-leaved tea tree), <i>Jacaranda mimosifolia</i> (jacaranda)
Groundcover	<i>Pteridium esculentum</i> (common bracken), <i>Lomandra longifolia</i> (spiny-headed mat-rush) and <i>Dianella caerulea</i> (blue flax-lily)

Established Planted Area

Canopy	<i>Angophora hispida</i> (dwarf apple), <i>Pinus radiata</i> (radiata pine), <i>Brachychiton acerifolius</i> (flame tree)
Midstorey / understorey	<i>Pittosporum undulatum</i> (sweet pittosporum), <i>Ceratopetalum gummiferum</i> (Christmas bush), <i>Bauhinia purpurea</i> (purple bauhinia), <i>Acacia floribunda</i> (white sally wattle)
Groundcover	<i>Nasturtium</i> sp. (nasturtium), <i>Ehrharta erecta</i> (<i>panic veldtgrass</i>), <i>Strelitzia reginae</i> (bird of paradise)

2.8.3 Threatened flora

No threatened flora have been recorded in this road reserve.

2.8.4 Threatened ecological communities

The Native Vegetation of the Sydney Metropolitan Area (OEH 2016c) vegetation mapping did not identify any TECs within Unmade Harston Avenue Reserve. The current survey did not detect any vegetation that corresponds to a TEC.

2.8.5 Fauna habitat and fauna

Fauna habitat recorded for Unmade Harston Avenue Reserve is summarised in Table 54.

Table 54 Fauna habitat summary of Unmade Harston Avenue Reserve

Fauna habitat (See Flora and Fauna Assessment, Volume 1 for criteria)

Locality	This road reserve is isolated from surrounding.
Site specific	Low to moderate cover of native vegetation within the edges of the reserve. Some mature canopy and midstorey trees are present in the reserve.
General fauna	Foraging, roosting and nesting potential for common native birds and reptiles and potential for foraging of native mammals such as possums.

Three species (two bird and one reptile) were detected at this reserve during surveys in December 2021 and January 2022 (Table 55). None of these species are threatened.

Table 55 Fauna species list for Unmade Harston Avenue Reserve

Class	Family	Scientific Name	Common Name	Status	RR 104
Birds	Sturnidae	<i>Acridotheres tristis</i>	common myna	*	c
Birds	Meliphagidae	<i>Manorina melanocephala</i>	noisy miner		c
Reptiles	Scincidae	<i>Lampropholis delicata</i>	dark-flecked garden sunskink		c

2.8.6 Weeds

The top five weed species and their densities within Unmade Harston Avenue Reserve are listed in Table 56. Overall weed cover is shown in Figure 23 and native cover is shown in Figure 24.

Table 56 Weeds within Unmade Harston Avenue Reserve

Weed Class Density (%)	Scientific name	Common name	Dominant stratum	% Cover
<10	<i>Ehrharta erecta</i>	panic veldtgrass	Lower	3
	<i>Taraxacum officinale</i>	dandelion	Lower	2
	Other weed species			2
	Total			7
10-29	<i>Anredera cordifolia</i>	madeira vine	Middle	10
	<i>Ehrharta erecta</i>	panic veldtgrass	Lower	10
	<i>Solanum nigrum</i>	black-berry nightshade	Lower	5
	<i>Bidens pilosa</i>	cobblers pegs	Lower	2
	Other weed species			1
	Total			28
30-59	<i>Bauhinia purpurea</i>	purple bauhinia	Middle	20
	<i>Strelitzia reginae</i>	bird of paradise	Lower	10
	<i>Ehrharta erecta</i>	panic veldtgrass	Lower	10
	<i>Pinus radiata</i>	radiata pine	Upper	10

Weed Class Density (%)	Scientific name	Common name	Dominant stratum	% Cover
	Other weed species			5
			Total	55
>70	<i>Nasturtium</i> sp.	nasturtium	Lower	50
	<i>Ehrharta erecta</i>	panic veldtgrass	Lower	15
	<i>Bidens pilosa</i>	cobblers pegs	Lower	5
	Other weed species			5
				Total

2.8.7 Threats to native plant communities

The main threats to the plant community within Unmade Harston Avenue Reserve is:

- stormwater runoff and the associated effects of erosion, sedimentation, nutrification and weed propagule dispersal
- garden escapes from surrounding private properties.

2.8.8 Current management practices

Unmade Harston Avenue Reserve is currently managed under Mosman Council's Bushcare Volunteer Program. A summary of the works to date is shown in Table 57.

Table 57 Bush regeneration and restoration works summary

Bush regeneration and restoration works summary

Weeding	Primary weeding targeting noxious, woody and vine weeds Secondary and maintenance weeding of noxious, woody and vine weed regrowth and annual and perennial herbs and grasses by hand weeding and spot spraying.
Planting	Scattered established plantings throughout the reserve to supplement native vegetation

2.8.9 Conservation significance

This site has a low priority for conservation. Due to the lack of connectivity and high weed abundance in this reserve, there is little potential for the vegetation to return to a fully structured community of Sydney Sandstone Gully Forest.

2.8.10 Recommendations

Current bushland management practices for Unmade Harston Avenue Reserve should be re-established. Prioritised recommendations are shown in Table 58.

Table 58 Recommended bush regeneration and restoration works

Recommended bush regeneration and restoration works

Priority	Description
1	Hand weeding and spot spraying for all noxious and environmental weeds throughout the road reserve
2	Planting of native vegetation to supplement revegetation

2.8.11 Flora species list

Flora species recorded during current and previous surveys of Unmade Harston Avenue Reserve are listed in Table 59.

Table 59 Flora species list

Family	Scientific name	Common name	Status	RR104
Fabaceae - Mimosoideae	<i>Acacia elata</i>	mountain cedar wattle	ni	a
Fabaceae - Mimosoideae	<i>Acacia floribunda</i>	white sally wattle		b
Fabaceae - Mimosoideae	<i>Acacia longifolia</i> subsp. <i>longifolia</i>	Sydney golden wattle		a
Fabaceae - Mimosoideae	<i>Acacia suaveolens</i>	sweet wattle		a
Fabaceae - Mimosoideae	<i>Acacia terminalis</i> subsp. <i>longiaxialis</i>	sunshine wattle		a
Fabaceae - Mimosoideae	<i>Acacia ulicifolia</i>	prickly Moses		a
Alstroemeriaceae	<i>Alstroemeria pulchella</i>	parrot alstroemeria	*	b
Asteraceae	<i>Ambrosia artemisiifolia</i>	annual ragweed	*	b
Myrtaceae	<i>Angophora costata</i>	Sydney red gum		b
Myrtaceae	<i>Angophora hispida</i>	dwarf apple		b
Basellaceae	<i>Anredera cordifolia</i>	madeira vine	WoNS	c
Asparagaceae	<i>Asparagus aethiopicus</i>	asparagus fern	WoNS	c
Proteaceae	<i>Banksia integrifolia</i> subsp. <i>integrifolia</i>	coast banksia		a
Proteaceae	<i>Banksia serrata</i>	old-man banksia		b
Fabaceae	<i>Bauhinia purpurea</i>	purple bauhinia	*	c
Asteraceae	<i>Bidens pilosa</i>	cobblers pegs	*	c
Sterculiaceae	<i>Brachychiton acerifolius</i>	flame tree		b
Poaceae	<i>Bromus catharticus</i>	praire grass	*	a
Myrtaceae	<i>Callistemon rigidus</i>	stiff bottlebrush		b
Cunoniaceae	<i>Ceratopetalum gummiferum</i>	Christmas bush		b
Lauraceae	<i>Cinnamomum camphora</i>	camphor laurel	*	a
Amaryllidaceae	<i>Clivia minata</i>	clivia	*	a
Araceae	<i>Colocasia</i> sp.	taro	*	c
Commelinaceae	<i>Commelina cyanea</i>	scurvy weed		b
Asteraceae	<i>Conyza</i> sp	fleabane	*	c
Rutaceae	<i>Correa reflexa</i> var. <i>speciosa</i>	common correa		a
Poaceae	<i>Cynodon dactylon</i>	couch		b
Phormiaceae	<i>Dianella caerulea</i>	blue flax-lily		b
Poaceae	<i>Dichelachne crinita</i>	longhair plume grass		b

Family	Scientific name	Common name	Status	RR104
Sapindaceae	<i>Dodonaea triquetra</i>	large-leaf hop-bush		b
Poaceae	<i>Ehrharta erecta</i>	panic veldtgrass	*	b
Myrtaceae	<i>Eucalyptus botryoides</i>	bangalay		b
Luzuriagaceae	<i>Eustrephus latifolius</i>	wombat berry		b
Asteraceae	<i>Galinsoga parviflora</i>	potato weed	*	b
Geraniaceae	<i>Geranium homeanum</i>	native geranium		c
Euphorbiaceae	<i>Glochidion ferdinandi</i> var. <i>ferdinandi</i>	cheese tree		a
Proteaceae	<i>Grevillea linearifolia</i>	linear-leaf grevillea		a
Proteaceae	<i>Grevillea sericea</i> subsp. <i>sericea</i>	pink spider flower		a
Proteaceae	<i>Grevillea speciosa</i>	red spider flower		a
Proteaceae	<i>Hakea</i> sp.			a
Dilleniaceae	<i>Hibbertia dentata</i>	trailing guinea flower		a
Euphorbiaceae	<i>Homalanthus populifolius</i>	bleeding heart		a
Poaceae	<i>Imperata cylindrica</i>	blady grass		b
Proteaceae	<i>Isopogon</i> sp.			a
Bignoniaceae	<i>Jacaranda mimosifolia</i>	jacaranda	*	b
Myrtaceae	<i>Kunzea ambigua</i>	tick bush		a
Myrtaceae	<i>Leptospermum polygalifolium</i>	yellow tea-tree		c
Oleaceae	<i>Ligustrum lucidum</i>	large leaved privet	*	a
Lomandraceae	<i>Lomandra longifolia</i>	spiny-headed mat-rush		b
Myrtaceae	<i>Melaleuca styphelioides</i>	prickly-leaved tea tree		b
Malvaceae	<i>Modiola caroliniana</i>	red-flowered mallow	*	b
Tropaeolaceae	<i>Nasturtium</i> sp.	nasturtium	*	c
Alliaceae	<i>Nothoscordum borbonicum</i>	onion weed	*	a
Ochnaceae	<i>Ochna serrulata</i>	mickey mouse plant	*	a
Asteraceae	<i>Osteospermum ecklonis</i>	cape daisy	*	a
Oxalidaceae	<i>Oxalis</i> sp.		*	c
Poaceae	<i>Pennisetum clandestinum</i>	kikuyu grass	*	b
Areaceae	<i>Phoenix canariensis</i>	canary island date palm	*	b
Pinaceae	<i>Pinus radiata</i>	radiata pine	*	b
Pittosporaceae	<i>Pittosporum undulatum</i>	sweet pittosporum		b
Fabaceae - Faboideae	<i>Pultenaea daphnoides</i>			a
Malvaceae	<i>Sida rhombifolia</i>	paddy's lucerne	*	c
Solanaceae	<i>Solanum nigrum</i>	black-berry nightshade	*	c
Asteraceae	<i>Sonchus oleraceus</i>	common sowthistle	*	a
Strelitziaceae	<i>Strelitzia reginae</i>	bird of paradise	*	b
Asteraceae	<i>Taraxacum officinale</i>	dandelion	*	c
Poaceae	<i>Themeda australis</i>	kangaroo grass		a
Lamiaceae	<i>Westringia fruticosa</i>	coastal rosemary		b

2.8.12 Maps for Unmade Harston Avenue Reserve



Vegetation communities

Established Planted Area
 Disturbed Sydney Sandstone Gully Forest
 Open Space

Site boundary

Figure 22: Vegetation Communities and threatened flora locations - Unmade Harston Ave Reserve

Mosman Council

Mosman Flora and Fauna Survey 2021





Figure 23: Native vegetation cover percent - Unmade Harston Ave Reserve

Mosman Council

Mosman Flora and Fauna Survey 2021

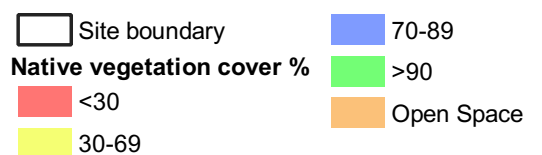
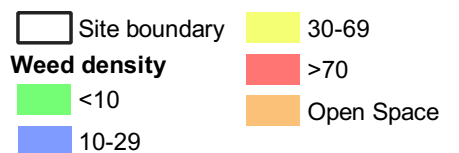




Figure 24: Weed density - Unmade Harston Ave Reserve

Mosman Council

Mosman Flora and Fauna Survey 2021



2.9 Unmade Grove Avenue Reserve

2.9.1 General description

Unmade Grove Avenue Reserve (reserve number 101) is located in between the corner of Edwards Bay Road and the Grove Avenue *cul-de-sac* in the east of Mosman LGA. For further information regarding geology and soil, see Total Earth Care (2007).

2.9.2 Vegetation communities

One vegetation community is recognised in Unmade Grove Avenue Reserve, Regrowth Sydney Sandstone Gully Forest (Table 60; Figure 25).

Table 60 Vegetation communities within Unmade Grove Avenue Reserve

Regrowth Sydney Sandstone Gully Forest

Canopy	<i>Angophora costata</i> (Sydney red gum) and <i>Callitris rhomboidea</i> (Port Jackson pine).
Midstorey	<i>Callistemon salignus</i> (willow bottlebrush), <i>Acacia binervia</i> (coast myall), <i>Jacaranda mimosifolia</i> (jacaranda), <i>Banksia integrifolia</i> subsp. <i>integrifolia</i> (coast banksia), <i>Glochidion ferdinandi</i> var. <i>ferdinandi</i> (cheese tree), and <i>Ficus rubiginosa</i> (Port Jackson fig).
Understorey	<i>Strelitzia nicolai</i> (giant bird of paradise), <i>Dianella caerulea</i> (blue flax-lily), <i>Lomandra longifolia</i> (spiny-headed mat-rush), <i>Monstera deliciosa</i> (fruit salad plant) and <i>Hedychium gardnerianum</i> (ginger lily).
Groundcover	<i>Ehrharta erecta</i> (panic veldtgrass), and <i>Tradescantia fluminensis</i> (trad)

2.9.3 Threatened flora

No threatened flora species have been recorded in this road reserve.

2.9.4 Threatened ecological communities

The Native Vegetation of the Sydney Metropolitan Area (OEH 2016c) vegetation mapping did not identify any TECs within Unmade Grove Avenue Reserve. The current survey did not detect any vegetation that corresponds to a TEC.

2.9.5 Fauna habitat and fauna

Fauna habitat recorded for Unmade Grove Avenue Reserve is summarised in Table 61.

Table 61 Fauna habitat summary of Unmade Grove Avenue Reserve

Fauna habitat (See Flora and Fauna Assessment, Volume 1 for criteria)

Locality	This road reserve is isolated from surrounding bushland however is in close proximity to Quakers Hat South bushland reserve (1).
Site specific	Moderate to dense cover of mostly native vegetation over the majority of the eastern part of the reserve. Loose rocks scattered throughout the reserve
General fauna	Foraging, roosting and nesting potential for common native birds, mammals and reptiles
Threatened fauna	Foraging potential for threatened megachiropteran bat species

Six species (four bird, one mammal and one reptile) were detected at this reserve during surveys in December 2021 and January 2022 (Table 62). One of these species, the grey-headed flying-fox (*Pteropus poliocephalus*), is threatened under both the EPBC Act and BC Act.

Table 62 Fauna species list for Unmade Grove Avenue Reserve

Class	Family	Scientific Name	Common Name	Status	RR 101
Birds	Corvidae	<i>Corvus coronoides</i>	Australian raven		c
Birds	Meliphagidae	<i>Manorina melanocephala</i>	noisy miner		c
Birds	Artamidae	<i>Strepera graculina</i>	pied currawong		c
Birds	Psittacidae	<i>Trichoglossus haematodus</i>	rainbow lorikeet		c
Mammals	Pteropodidae	<i>Pteropus poliocephalus</i>	grey-headed flying-fox	V	c
Reptiles	Scincidae	<i>Lampropholis guichenoti</i>	pale-flecked garden sunskink		c

2.9.6 Weeds

The top five weed species and their densities within Unmade Grove Avenue Reserve are listed in Table 63. Overall weed cover is shown in Figure 26 and native cover is shown in Figure 27.

Table 63 Weeds within Unmade Grove Avenue Reserve

Weed Class Density (%)	Scientific name	Common name	Dominant stratum	% Cover
10-29	<i>Monstera deliciosa</i>	fruit salad plant	Lower	5
	<i>Ehrharta erecta</i>	panic veldtgrass	Lower	5
	<i>Strelitzia reginae</i>	bird of paradise	Lower	5
	<i>Solanum nigrum</i>	black-berry nightshade	Lower	2
	Other weeds			2
				Total
30-69	<i>Tradescantia fluminensis</i>	trad	Lower	15
	<i>Ehrharta erecta</i>	panic veldtgrass	Lower	10
	<i>Ipomoea indica</i>	morning glory	Lower	5
	<i>Hedychium gardnerianum</i>	ginger lily	Lower	5
	<i>Colocasia</i> sp.	taro	Lower	5
				Total

2.9.7 Threats to native plant communities

The main threats to the plant communities within Unmade Grove Avenue Reserve include:

- garden escapes from surrounding private properties.

2.9.8 Current management practices

Unmade Grove Avenue Reserve is currently managed under Mosman Council's Bushcare Volunteer Program. A summary of the works to date is shown in Table 64.

Table 64 Bush regeneration and restoration works summary

Bush regeneration and restoration works summary

Weeding	<ul style="list-style-type: none"> Primary weeding targeting noxious, woody and vine weeds Secondary and maintenance weeding of noxious, woody and vine weed regrowth
Planting	<ul style="list-style-type: none"> Scattered plantings to supplement existing native vegetation and regeneration

2.9.9 Conservation significance

This site has a medium priority for conservation. Weed abundance in this reserve is low and has reduced significantly since previous surveys by Total Earth Care (2007). Bushland restoration works are still required to maintain low weed abundance throughout the reserve.

2.9.10 Recommendations

Current bushland management practices should be continued. Prioritised recommendations are shown in Table 65.

Table 65 Recommended bush regeneration and restoration works

Recommended bush regeneration and restoration works

Priority	Description
1	Continue hand weeding and spot spraying for all noxious and environmental weeds throughout the road reserve.
2	Continue planting of native vegetation to supplement regeneration

2.9.11 Flora species list

Flora species recorded during current and previous surveys of Unmade Grove Avenue Reserve are listed in Table 66.

Table 66 Flora species list

Family	Scientific name	Common name	Status	RR101
Fabaceae - Mimosoideae	<i>Acacia binervia</i>	coast myall		b
Fabaceae - Mimosoideae	<i>Acacia floribunda</i>	white sally wattle		a
Fabaceae - Mimosoideae	<i>Acacia longifolia</i> subsp. <i>longifolia</i>	Sydney golden wattle		c
Fabaceae - Mimosoideae	<i>Acacia suaveolens</i>	sweet wattle		a
Fabaceae - Mimosoideae	<i>Acacia terminalis</i> subsp. <i>longiaxialis</i>	sunshine wattle		a
Fabaceae - Mimosoideae	<i>Acacia ulicifolia</i>	prickly Moses		a
Polygonaceae	<i>Acetosa sagittate</i>	turkey rhubarb	*	c
Adiantaceae	<i>Adiantum aethiopicum</i>	common maidenhair		b
Amaranthaceae	<i>Alternanthera denticulata</i>	lesser joyweed		a

Family	Scientific name	Common name	Status	RR101
Primulaceae	<i>Anagallis arvensis</i>	scarlet pimpernel	*	b
Myrtaceae	<i>Angophora costata</i>	Sydney red gum		b
Asparagaceae	<i>Asparagoides aethiopicus</i>	ground asparagus	WoNS	c
Proteaceae	<i>Banksia integrifolia</i> subsp. <i>integrifolia</i>	coast banksia		b
Proteaceae	<i>Banksia serrata</i>	old-man banksia		c
Cunoniaceae	<i>Bauera rubioides</i>	river rose		a
Asteraceae	<i>Bidens pilosa</i>	cobblers pegs	*	c
Blechnaceae	<i>Blechnum cartilagineum</i>	gristle fern		c
Cunoniaceae	<i>Callicoma serratifolia</i>	black wattle		b
Myrtaceae	<i>Callistemon salignus</i>	willow bottlebrush		c
Cupressaceae	<i>Callitris rhomboidea</i>	Port Jackson pine		c
Dicksoniaceae	<i>Calochlaena dubia</i>	soft bracken		b
Amaryllidaceae	<i>Clivia minata</i>	clivia	*	c
Araceae	<i>Colocasia</i> sp.	taro	*	c
Commelinaceae	<i>Commelina cyanea</i>	scurvy weed		b
Asteraceae	<i>Conyza</i> sp	fleabane	*	c
Rutaceae	<i>Correa reflexa</i> var. <i>speciosa</i>	common correa		a
Asteraceae	<i>Crassocephalum crepidioides</i>	thickhead	*	c
Cyatheaceae	<i>Cyathea cooperi</i>	straw treefern		b
Phormiaceae	<i>Dianella caerulea</i>	blue flax-lily		b
Convolvulaceae	<i>Dichondra repens</i>	kidney weed		b
Sapindaceae	<i>Dodonaea triquetra</i>	large-leaf hop-bush		b
Poaceae	<i>Ehrharta erecta</i>	panic veldtgrass	*	b
Elaeocarpaceae	<i>Elaeocarpus reticulatus</i>	blueberry ash		b
Luzuriagaceae	<i>Eustrephus latifolius</i>	wombat berry		b
Moraceae	<i>Ficus rubiginosa</i>	Port Jackson fig		b
Fumariaceae	<i>Fumaria officinalis</i>			a
Euphorbiaceae	<i>Glochidion ferdinandi</i> var. <i>ferdinandi</i>	cheese tree		b
Proteaceae	<i>Hakea sericea</i>	needlebush		c
Fabaceae - Faboideae	<i>Hardenbergia violacea</i>	purple coral pea		a
Zingiberaceae	<i>Hedychium gardnerianum</i>	ginger lily	*	c
Malvaceae	<i>Hibiscus</i> sp. hort.	pink hibiscus	*	c
Euphorbiaceae	<i>Homalanthus populifolius</i>	bleeding heart		c
Poaceae	<i>Imperata cylindrica</i>	blady grass		b
Convolvulaceae	<i>Ipomoea indica</i>	morning glory	*	c
Bignoniaceae	<i>Jacaranda mimosifolia</i>	jacaranda	*	b
Myrtaceae	<i>Leptospermum laevigatum</i>	coast teatree		b
Oleaceae	<i>Ligustrum sinense</i>	small leaved privet	*	c
Lomandraceae	<i>Lomandra longifolia</i>	spiny-headed mat-rush		b
Myrtaceae	<i>Melaleuca armillaris</i>	bracelet honey-myrtle		a

Family	Scientific name	Common name	Status	RR101
Araceae	<i>Monstera deliciosa</i>	fruit salad plant	*	b
Alliaceae	<i>Nothoscordum borbonicum</i>	onion weed	*	a
Urticaceae	<i>Parietaria judaica</i>	asthma weed	*	a
Areaceae	<i>Phoenix canariensis</i>	canary island date palm	*	b
Pittosporaceae	<i>Pittosporum undulatum</i>	sweet pittosporum		a
Pteridaceae	<i>Pteris tremula</i>	tender brake		b
Solanaceae	<i>Solanum nigrum</i>	black-berry nightshade	*	c
Asteraceae	<i>Sonchus oleraceus</i>	common sowthistle	*	a
Caryophyllaceae	<i>Stellaria media</i>	common chickweed	*	b
Strelitziaceae	<i>Strelitzia nicolai</i>	giant bird of paradise	*	b
Strelitziaceae	<i>Strelitzia reginae</i>	bird of paradise	*	b
Poaceae	<i>Themeda australis</i>	kangaroo grass		a
Commelinaceae	<i>Tradescantia fluminensis</i>	trad	*	b
Myrtaceae	<i>Tristaniopsis laurina</i>	water gum		b
Violaceae	<i>Viola hederacea</i>	native violet		c
Lamiaceae	<i>Westringia fruticosa</i>	coastal rosemary		b
Agavaceae	<i>Yucca aloifolia</i>	Spanish bayonet	*	c


2.9.12 Maps for Unmade Grove Avenue Reserve



Vegetation communities

 Regrowth Sydney Sandstone Gully Forest

Figure 25: Vegetation Communities and threatened flora locations - Unmade Grove Ave Reserve

 Site boundary

Mosman Council

Mosman Flora and Fauna Survey 2021

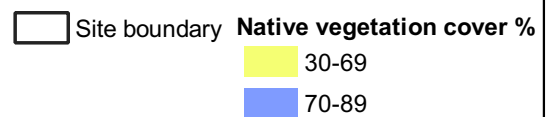




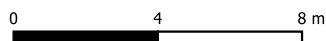
Figure 26: Native vegetation cover percent - Unmade Grove Ave Reserve

Mosman Council

Mosman Flora and Fauna Survey 2021



Job number: PR6939
Date: 30/01/2022



GDA 1994 MGA Zone 56
Projection: Transverse Mercator
Datum: GDA 1994
Units: Meter

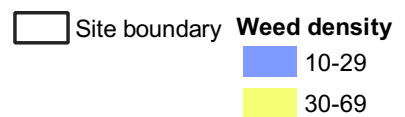
Data Sources: © State of New South Wales (Department of Planning, Industry and Environment), 2022; © Ecosure 2022
ECOSURE does not warrant the accuracy or completeness of information displayed in this map. Any person using this map does so at their own risk, and should consider the context of the report that this map supports.
ECOSURE shall bear no responsibility or liability for any errors, faults, defects, or omissions in the information.



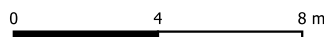
Figure 27: Weed density - Unmade Grove Ave Reserve

Mosman Council

Mosman Flora and Fauna Survey 2021



Job number: PR6939
Date: 30/01/2022



GDA 1994 MGA Zone 56
Projection: Transverse Mercator
Datum: GDA 1994
Units: Meter

Data Sources: © State of New South Wales (Department of Planning, Industry and Environment), 2022; © Ecosure 2022
ECOSURE does not warrant the accuracy or completeness of information displayed in this map. Any person using this map does so at their own risk, and should consider the context of the report that this map supports.
ECOSURE shall bear no responsibility or liability for any errors, faults, defects, or omissions in the information.

2.10 Unmade Inkerman Street Reserve (South)

2.10.1 General description

Unmade Inkerman Street Reserve (South) (reserve number 193) is located at the northern of Inkerman Street and south of Carrington Avenue, in the north-west of Mosman LGA. The road reserve occurs on a steep north-facing slope with a *cul-de-sac* at the top and a public path down to Carrington Avenue on the west side of the reserve. For further information regarding geology and soil, see Total Earth Care (2007).

2.10.2 Vegetation communities

One vegetation community is recognised in Unmade Inkerman Street (South), Disturbed Sydney Sandstone Gully Forest (Table 67; Figure 28). The reserve also has Open Space at the southern end.

Table 67 Vegetation communities at Unmade Inkerman Street (South)

Disturbed Sydney Sandstone Gully Forest	
Canopy	<i>Allocasuarina littoralis</i> (black she-oak), <i>Casuarina glauca</i> (swamp oak) and <i>Angophora costata</i> (Sydney red gum).
Midstorey	<i>Banksia integrifolia</i> (coast banksia), <i>Glochidion ferdinandi</i> var. <i>ferdinandi</i> (cheese tree), <i>Pittosporum undulatum</i> (sweet pittosporum), <i>Melaleuca quinquenervia</i> (broad-leaved paperbark) and <i>Celtis sinensis</i> (Japanese hackberry)
Understorey	<i>Banksia integrifolia</i> (coast banksia) <i>Lomandra longifolia</i> (spiny-headed mat-rush), <i>Monstera deliciosa</i> (fruit salad plant)
Groundcover	<i>Commelina cyanea</i> (scurvy weed), <i>Nephrolepis cordifolia</i> (fishbone fern) and <i>Dianella caerulea</i> (blue flax-lily).

2.10.3 Threatened flora

No threatened flora species have been recorded in this road reserve.

2.10.4 Threatened ecological communities

The Native Vegetation of the Sydney Metropolitan Area (OEH 2016c) vegetation mapping did not identify any TECs within Unmade Inkerman Street Reserve (South). The current survey did not detect any vegetation that corresponds to a TEC.

2.10.5 Fauna habitat and fauna

Fauna habitat recorded for Unmade Inkerman Street Reserve (South) is summarised in Table 68.

Table 68 Fauna habitat summary of Unmade Inkerman Street Reserve (South)

Fauna habitat	
Locality	This road reserve is isolated from surrounding bushland however is in close proximity to the harbour of Quakers Hat Bay.

Fauna habitat

Site specific	Moderate cover of native vegetation over the majority of the reserve.
General fauna	Foraging, roosting and nesting potential for common native birds, mammals and reptiles
Threatened fauna	Foraging and/or roosting potential for a limited number of threatened bat species.

Five species (three birds and two reptile) were detected at this reserve during surveys in December 2021 and January 2022 (Table 69). None of these species are threatened.

Table 69 Fauna species list for Unmade Inkerman Street Reserve (South)

Class	Family	Scientific Name	Common Name	Status	RR 193
Birds	Megapodiidae	<i>Alectura lathamii</i>	Australian brushturkey		c
Birds	Corvidae	<i>Corvus coronoides</i>	Australian raven		c
Birds	Meliphagidae	<i>Manorina melanocephala</i>	noisy miner		c
Reptiles	Scincidae	<i>Cryptoblepharus virgatus</i>	wall lizard		c
Reptiles	Agamidae	<i>Intellagama lesueurii lesueurii</i>	eastern water dragon		c

2.10.6 Weeds

The top five weed species and their densities within Unmade Inkerman Street Reserve (South) are listed in Table 70. Overall weed cover is shown in Figure 29 and native cover is shown in Figure 30.

Table 70 Weeds within Unmade Inkerman Street Reserve (South)

Weed Class Density (%)	Scientific name	Common name	Dominant stratum	% Cover
10-29	<i>Nephrolepis cordifolia</i>	fishbone fern	Lower	7
	<i>Ehrharta erecta</i>	panic veldtgrass	Lower	7
	<i>Agapanthus praecox</i> subsp. <i>orientalis</i>	African lily	Lower	5
	<i>Crocsmia</i> × <i>crocsmiiflora</i>	montbretia	Lower	5
	<i>Conyza</i> sp.	fleabane		2
				Total

2.10.7 Threats to native plant communities

The main threat to the plant community within Unmade Inkerman Street Reserve (South) is:

- stormwater runoff and the associated effects of erosion, sedimentation, nutrification and weed propagule dispersal
- garden escapes from surrounding private properties.

2.10.8 Current management practices

Unmade Inkerman Street Reserve (South) is currently managed under Mosman Council's Bushland Volunteer Program. A summary of the works to date is shown in Table 71.

Table 71 Bush regeneration and restoration works summary

Bush regeneration and restoration works summary

Weeding	Primary weeding targeting noxious, woody and vine weeds Secondary and maintenance weeding of noxious, woody and vine weed regrowth and annual and perennial herbs and grasses by hand weeding and spot spraying.
Planting	Scattered established plantings throughout the reserve to supplement native vegetation

2.10.9 Conservation significance

This site has a medium priority for conservation. Weed abundance in this reserve is low to moderate and has reduced since previous surveys by Total Earth Care (2007). Continued bush regeneration works including planting of native vegetation will improve the condition of the native vegetation within the road reserve.

2.10.10 Recommendations

Current bushland management practices for Unmade Inkerman Street Reserve (South) should be continued. Prioritised recommendations are shown in Table 72.

Table 72 Recommended bush regeneration and restoration works

Recommended bush regeneration and restoration works

Priority	Description
1	Continue hand weeding and spot spraying for all noxious and environmental weeds throughout the road reserve
2	Planting of native vegetation to supplement revegetation
3	Removal or horticultural flora, particularly <i>Hedera</i> sp in the open space area

2.10.11 Flora species list

Flora species recorded during current and previous surveys of Unmade Inkerman Street Reserve (South) are listed in Table 73.

Table 73 Flora species list

Family	Scientific name	Common name	Status	RR193
Fabaceae - Mimosoideae	<i>Acacia longifolia</i> subsp. <i>longifolia</i>	Sydney golden wattle		a
Fabaceae - Mimosoideae	<i>Acacia suaveolens</i>	sweet wattle		a
Fabaceae - Mimosoideae	<i>Acacia ulicifolia</i>	prickly Moses		a
Myrtaceae	<i>Acmena smithii</i>	lilly pilly		b
Basellaceae	<i>Anredera cordifolia</i>	madeira vine	WoNS	c
Alliaceae	<i>Agapanthus praecox</i> subsp. <i>orientalis</i>	African lily	*	c

Family	Scientific name	Common name	Status	RR193
Casuarinaceae	<i>Allocasuarina littoralis</i>	black she-oak		c
Alstroemeriaceae	<i>Alstroemeria pulchella</i>	parrot alstroemeria	*	b
Apocynaceae	<i>Araujia sericifera</i>	moth vine	*	a
Asparagaceae	<i>Asparagus aethiopicus</i>	asparagus fern	WoNS	b
Proteaceae	<i>Banksia integrifolia</i> subsp. <i>integrifolia</i>	coast banksia		b
Proteaceae	<i>Banksia serrata</i>	old-man banksia		c
Asteraceae	<i>Bidens pilosa</i>	cobblers pegs	*	b
Myrtaceae	<i>Callistemon citrinus</i>	crimson bottlebrush		b
Myrtaceae	<i>Callistemon</i> sp.	bottlebrush		a
Cupressaceae	<i>Callitris rhomboidea</i>	Port Jackson pine		c
Casuarinaceae	<i>Casuarina glauca</i>	swamp oak		b
Cannabaceae	<i>Celtis sinensis</i>	Japanese hackberry	*	c
Commelinaceae	<i>Commelina cyanea</i>	scurvy weed		b
Asteraceae	<i>Conyza</i> sp.	fleabane	*	b
Malaceae	<i>Cotoneaster</i> sp.		*	a
Asteraceae	<i>Crassocephalum crepidioides</i>	thickhead	*	a
Iridaceae	<i>Crocasmia</i> × <i>crocosmiiflora</i>	montbretia	*	c
Cyatheaceae	<i>Cyathea australis</i>	black tree-fern		b
Cyatheaceae	<i>Cyathea cooperi</i>	straw treefern		b
Apiaceae	<i>Cyclosporum leptophyllum</i>	slender celery	*	a
Poaceae	<i>Cynodon dactylon</i>	couch		c
Phormiaceae	<i>Dianella caerulea</i>	blue flax-lily		c
Dicksoniaceae	<i>Dicksonia antarctica</i>	soft tree-fern		c
Poaceae	<i>Digitaria sanguinalis</i>	summer grass	*	b
Doryanthaceae	<i>Doryanthes excelsa</i>	Gynea lily		c
Poaceae	<i>Ehrharta erecta</i>	panic veldtgrass	*	b
Elaeocarpaceae	<i>Elaeocarpus reticulatus</i>	blueberry ash		b
Malaceae	<i>Eriobotrya japonica</i>	loquat	*	a
Myrtaceae	<i>Eucalyptus botryoides</i>	bangalay		b
Myrtaceae	<i>Eucalyptus sieberi</i>	silvertop ash		b
Euphorbiaceae	<i>Euphorbia peplus</i>	petty spurge	*	a
Moraceae	<i>Ficus rubiginosa</i>	Port Jackson fig		a
Euphorbiaceae	<i>Glochidion ferdinandi</i> var. <i>ferdinandi</i>	cheese tree		b
Proteaceae	<i>Grevillea linearifolia</i>	linear-leaf grevillea		b
Proteaceae	<i>Grevillea robusta</i>	silky oak	ni	b
Proteaceae	<i>Hakea gibbosa</i>	needlebush		c
Dilleniaceae	<i>Hibbertia scandens</i>	climbing guinea flower		c
Poaceae	<i>Imperata cylindrica</i>	blady grass		b
Bignoniaceae	<i>Jacaranda mimosifolia</i>	jacaranda	*	c

Family	Scientific name	Common name	Status	RR193
Oleaceae	<i>Jasminum</i> sp.	jasmine	*	c
Juncaceae	<i>Juncus usitatus</i>	common rush		a
Myrtaceae	<i>Kunzea ambigua</i>	tick bush		b
Myrtaceae	<i>Leptospermum laevigatum</i>	coast teatree		a
Myrtaceae	<i>Leptospermum polygalifolium</i>	yellow tea-tree		c
Lomandraceae	<i>Lomandra longifolia</i>	spiny-headed mat-rush		b
Myrtaceae	<i>Melaleuca quinquenervia</i>	broad-leaved paperbark		c
Davalliaceae	<i>Nephrolepis cordifolia</i>	fishbone fern	ni	b
Ochnaceae	<i>Ochna serrulata</i>	mickey mouse plant	*	a
Poaceae	<i>Oplismenus aemulus</i>	oplismenus		b
Poaceae	<i>Panicum simile</i>	two-colour panic		a
Urticaceae	<i>Parietaria judaica</i>	asthma weed	*	b
Pittosporaceae	<i>Pittosporum undulatum</i>	sweet pittosporum		b
Apocynaceae	<i>Plumeria alba</i>	frangipani	*	a
Poaceae	<i>Poa affinis</i>	poa		a
Dennstaedtiaceae	<i>Pteridium esculentum</i>	common bracken		b
Pteridaceae	<i>Pteris tremula</i>	tender brake		b
Fabaceae - Faboideae	<i>Pultenaea daphnoides</i>			a
Araliaceae	<i>Schefflera actinophylla</i>	umbrella tree	ni	b
Poaceae	<i>Setaria palmifolia</i>	palm grass	*	c
Malvaceae	<i>Sida rhombifolia</i>	paddy's lucerne	*	c
Asteraceae	<i>Sonchus oleraceus</i>	common sowthistle	*	b
Caryophyllaceae	<i>Stellaria media</i>	common chickweed	*	b
Myrtaceae	<i>Syzygium australe</i>	bush cherry		c
Poaceae	<i>Themeda australis</i>	kangaroo grass		a
Commelinaceae	<i>Tradescantia fluminensis</i>	trad	*	b
Scrophulariaceae	<i>Veronica arvensis</i>	wall speedwell	*	b
Lamiaceae	<i>Westringia fruticosa</i>	coastal rosemary		b

2.10.12 Maps for Unmade Inkerman Street (South)



Vegetation communities

 Disturbed Sydney Sandstone Gully Forest



 Open Space

Figure 28: Vegetation Communities and threatened flora locations - Unmade Inkerman St Reserve (South)

 Site boundary

Mosman Council

Mosman Flora and Fauna Survey 2021





Figure 29: Native vegetation cover percent - Unmade Inkerman St Reserve (South)

Mosman Council

Mosman Flora and Fauna Survey 2021

Site boundary
 Native vegetation cover %
 30-69
 Open Space



Job number: PR6939
Date: 30/01/2022



0 4 8 m

GDA 1994 MGA Zone 56
Projection: Transverse Mercator
Datum: GDA 1994
Units: Meter

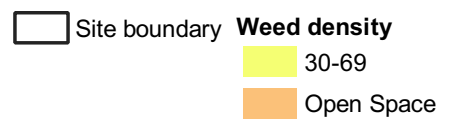
Data Sources: © State of New South Wales (Department of Planning, Industry and Environment), 2022; © Ecosure 2022
ECOSURE does not warrant the accuracy or completeness of information displayed in this map. Any person using this map does so at their own risk, and should consider the context of the report that this map supports.
ECOSURE shall bear no responsibility or liability for any errors, faults, defects, or omissions in the information.



Figure 30: Weed density - Unmade Inkerman St Reserve (South)

Mosman Council

Mosman Flora and Fauna Survey 2021



2.11 Unmade Kahibah Road Reserve (South)

2.11.1 General description

Unmade Kahibah Road Reserve (South) (reserve number 108) is located in between Coronation Avenue and Wolseley Road, south of Balmoral Park bushland reserve in the east of Mosman LGA. The road reserve occurs on a steep north-facing slope with some sandstone outcrops and a public pathway. For further information regarding geology and soil, see Total Earth Care (2007).

2.11.2 Vegetation communities

Two vegetation communities are recognised in Unmade Kahibah Road Reserve (South), Regrowth Sydney Sandstone Gully Forest, and Disturbed Sydney Sandstone Gully Forest (Table 74; Figure 31).

Table 74 Vegetation communities within Unmade Kahibah Road Reserve (South)

Regrowth Sydney Sandstone Gully Forest	
Canopy	<i>Eucalyptus botryoides</i> (bangalay)
Midstorey and understorey	<i>Allocasuarina littoralis</i> (black she-oak), <i>Jacaranda mimosifolia</i> (jacaranda), <i>Pittosporum undulatum</i> (sweet pittosporum)
Groundcover	<i>Cissus antarctica</i> (kangaroo vine), <i>Lomandra longifolia</i> (spiny-headed mat-rush) and <i>Dianella caerulea</i> (blue flax-lily)
Disturbed Sydney Sandstone Gully Forest	
Canopy	<i>Ficus</i> sp. (fig), <i>Eucalyptus robusta</i> (swamp mahogany)
Midstorey / understorey	<i>Archontophoenix cunninghamiana</i> (Bangalow palm), <i>Corymbia gummifera</i> (red bloodwood), and <i>Kunzea ambigua</i> (tick bush)
Groundcover	<i>Monstera deliciosa</i> (fruit salad plant), and <i>Cissus antarctica</i> (kangaroo vine)

2.11.3 Threatened flora

No threatened flora species have been recorded in this road reserve.

2.11.4 Threatened ecological communities

The Native Vegetation of the Sydney Metropolitan Area (OEH 2016c) vegetation mapping did not identify any TECs within Unmade Kahibah Road Reserve (South). The current survey did not detect any vegetation that corresponds to a TEC.

2.11.5 Fauna habitat and fauna

Fauna habitat recorded for Unmade Kahibah Road Reserve (South) is summarised in Table 75.

Table 75 Fauna habitat summary of Unmade Kahibah Road (South) Reserve

Fauna habitat

Locality	This road reserve has some connectivity with Balmoral Park bushland reserve to the north and is in close proximity to other bushland and road reserves
Site specific	Relatively low cover of native vegetation over the entire reserve.
General fauna	Foraging, roosting and nesting potential for common native birds and reptiles

Six species (four birds and two reptile) were detected at this reserve during surveys in December 2021 and January 2022 (Table 76). None of these species are threatened.

Table 76 Fauna species list for Unmade Kahibah Road Reserve (South)

Class	Family	Scientific Name	Common Name	Status	RR 108
Birds	Megapodiidae	<i>Alectura lathami</i>	Australian brushturkey		c
Birds	Meliphagidae	<i>Manorina melanocephala</i>	noisy miner		c
Birds	Artamidae	<i>Strepera graculina</i>	pied currawong		c
Birds	Psittacidae	<i>Trichoglossus haematodus</i>	rainbow lorikeet		c
Reptiles	Scincidae	<i>Lampropholis delicata</i>	dark-flecked garden sunskink		c
Reptiles	Scincidae	<i>Lampropholis guichenoti</i>	pale-flecked garden sunskink		c

2.11.6 Weeds

The weeds in this reserve are minimal and therefore only three main problem weed species have been recorded Table 77. Overall weed cover is shown in Figure 32 and native cover is shown in Figure 33.

Table 77 Weeds within Disturbed Sydney Sandstone Gully Forest

Weed Class Density (%)	Scientific name	Common name	Dominant stratum	% Cover
10-29	<i>Monstera deliciosa</i>	fruit salad plant	Lower	3
	<i>Erythrina crista-galli</i>	cockspur coral tree	Lower	3
	<i>Jacaranda mimosifolia</i>	jacaranda	Lower	3
	<i>Jasminum</i> sp.	jasmine	Lower	2
	Other weeds			2
				Total

2.11.7 Threats to native plant communities

Current threats to the plant community within Unmade Kahibah Road Reserve (South) mostly include garden escapes from surrounding private properties.

2.11.8 Current management practices

Unmade Kahibah Road Reserve (South) is currently managed under Mosman Council's

Bushcare Volunteer Program. A summary of the works to date is shown in Table 78.

Table 78 Bush regeneration and restoration works summary

Bush regeneration and restoration works summary

Weeding	Primary weeding targeting noxious, woody and vine weeds Secondary and maintenance weeding of noxious, woody and vine weed regrowth and annual and perennial herbs and grasses by hand weeding and spot spraying.
Planting	Scattered established plantings throughout the reserve to supplement native vegetation

2.11.9 Conservation significance

This site has a low priority for conservation. Weed abundance in this reserve is low and has significantly reduced since previous surveys by Total Earth Care (2007). The road reserve is also close to Balmoral Park bushland reserve and is therefore important for connectivity. Continued bush regeneration works including planting of native vegetation will maintain and improve the condition of the native vegetation within the road reserve.

2.11.10 Recommendations

Current bushland management practices for Unmade Kahibah Road Reserve (South) should be continued. Prioritised recommendations are shown in Table 79.

Table 79 Recommended bush regeneration and restoration works

Recommended bush regeneration and restoration works

Priority	Description
1	Continue hand weeding and spot spraying for all noxious and environmental weeds throughout the road reserve
2	Replant slope with native species

2.11.11 Flora species list

Flora species recorded during current and previous surveys of Unmade Kahibah Road Reserve (South) are listed in Table 80.

Table 80 Flora species list

Family	Scientific name	Common name	Status	RR108
Fabaceae - Mimosoideae	<i>Acacia longifolia</i> subsp. <i>longifolia</i>	Sydney golden wattle		a
Fabaceae - Mimosoideae	<i>Acacia terminalis</i> subsp. <i>eastern Sydney</i>	sunshine wattle	E	a
Casuarinaceae	<i>Allocasuarina littoralis</i>	black she-oak		c
Alstroemeriaceae	<i>Alstroemeria pulchella</i>	parrot alstroemeria		a
Basellaceae	<i>Anredera cordifolia</i>	madeira vine	WoNS	a
Areaceae	<i>Archontophoenix cunninghamiana</i>	bangalow palm		c
Proteaceae	<i>Banksia integrifolia</i> subsp. <i>integrifolia</i>	coast banksia		b


Family	Scientific name	Common name	Status	RR108
Asteraceae	<i>Bidens pilosa</i>	cobblers pegs	*	a
Sterculiaceae	<i>Brachychiton acerifolius</i>	flame tree		b
Myrtaceae	<i>Callistemon saligna</i>	crimson bottlebrush		a
Vitaceae	<i>Cissus antarctica</i>	kangaroo vine		b
Asteraceae	<i>Conyza</i> sp.	fleabane	*	a
Myrtaceae	<i>Corymbia gummifera</i>	red bloodwood		b
Asteraceae	<i>Crassocephalum crepidioides</i>	thickhead	*	a
Apiaceae	<i>Cyclospermum leptophyllum</i>	slender celery	*	a
Phormiaceae	<i>Dianella caerulea</i>	blue flax-lily		a
Proteaceae	<i>Hakea sericea</i>	needlebush		b
Fabaceae	<i>Erythrina crista-galli</i>	cockspur coral tree	*	b
Myrtaceae	<i>Eucalyptus botryoides</i>	bangalay		b
Myrtaceae	<i>Eucalyptus robusta</i>	swamp mahogany		b
Euphorbiaceae	<i>Euphorbia pepplus</i>	petty spurge	*	a
Moraceae	<i>Ficus</i> sp.	fig		b
Proteaceae	<i>Grevillea linearifolia</i>	linear-leaf grevillea		a
Convolvulaceae	<i>Ipomoea cairica</i>	coastal morning glory	*	a
Poaceae	<i>Imperata cylindrica</i>	blady grass		c
Bignoniaceae	<i>Jacaranda mimosifolia</i>	jacaranda	*	c
Oleaceae	<i>Jasminum</i> sp.	jasmine	*	c
Juncaceae	<i>Juncus usitatus</i>	common rush		a
Myrtaceae	<i>Kunzea ambigua</i>	tick bush		b
Lomandraceae	<i>Lomandra longifolia</i>	spiny-headed mat-rush		b
Fabaceae - Faboideae	<i>Medicago polymorpha</i>	burr medic	*	a
Myrtaceae	<i>Melaleuca quinquenervia</i>	broad-leaved paperbark		c
Araceae	<i>Monstera deliciosa</i>	fruit salad plant	*	b
Musaceae	<i>Musa</i> sp.	banana	*	a
Apocynaceae	<i>Nerium oleander</i>	oleander	*	a
Pittosporaceae	<i>Pittosporum undulatum</i>	sweet pittosporum		b
Solanaceae	<i>Solanum nigrum</i>	blackberry nightshade	*	a
Asteraceae	<i>Sonchus oleraceus</i>	common sowthistle	*	a
Aizoaceae	<i>Tetragonia tetragonioides</i>	New Zealand spinach		a
Poaceae	<i>Themeda australis</i>	kangaroo grass		a
Lamiaceae	<i>Westringia fruticosa</i>	coastal rosemary		b

2.11.12 Maps for Unmade Kahibah Road Reserve (South)




Vegetation communities

 Disturbed Sydney Sandstone Gully Forest

 Open Space

 Regrowth Sydney Sandstone Gully Forest

Figure 31: Vegetation Communities and threatened floralocations - Unmade Kahiba Rd Reserve (South)

 Site boundary

Mosman Council

Mosman Flora and Fauna Survey 2021

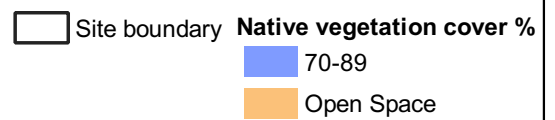




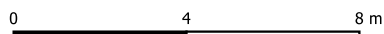
Figure 32: Native vegetation cover percent - Unmade Kahiba Rd Reserve (South)

Mosman Council

Mosman Flora and Fauna Survey 2021



Job number: PR6939
Date: 30/01/2022



GDA 1994 MGA Zone 56
Projection: Transverse Mercator
Datum: GDA 1994
Units: Meter

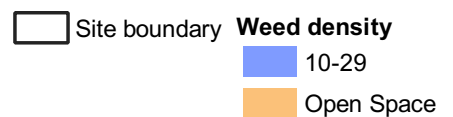
Data Sources: © State of New South Wales (Department of Planning, Industry and Environment), 2022; © Ecosure 2022
ECOSURE does not warrant the accuracy or completeness of information displayed in this map. Any person using this map does so at their own risk, and should consider the context of the report that this map supports.
ECOSURE shall bear no responsibility or liability for any errors, faults, defects, or omissions in the information.



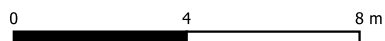
Figure 33: Weed density - Unmade Kahiba Rd Reserve (South)

Mosman Council

Mosman Flora and Fauna Survey 2021



Job number: PR6939
Date: 30/01/2022



GDA 1994 MGA Zone 56
Projection: Transverse Mercator
Datum: GDA 1994
Units: Meter

Data Sources: © State of New South Wales (Department of Planning, Industry and Environment), 2022; © Ecosure 2022
ECOSURE does not warrant the accuracy or completeness of information displayed in this map. Any person using this map does so at their own risk, and should consider the context of the report that this map supports.
ECOSURE shall bear no responsibility or liability for any errors, faults, defects, or omissions in the information.

Revision History

Revision No.	Revision date	Details	Prepared by	Reviewed & Approved by
00	08/02/2022	Mosman Flora and Fauna Survey 2022 V3	Cameron Radford, Senior Ecologist	Heather Richards, Senior Environmental Scientist
01	21/02/2022	Mosman Flora and Fauna Survey 2022 V3 FINAL	Cameron Radford, Senior Ecologist	Heather Richards, Senior Environmental Scientist

Distribution List

Copy #	Date	Type	Issued to	Name
1	09/02/2022	Electronic	Mosman Municipal Council	Stephen Wall
2	09/02/2022	Electronic	Ecosure	Administration
3	22/02/2022	Electronic	Mosman Municipal Council	Stephen Wall
4	22/02/2022	Electronic	Ecosure	Administration

Citation: Ecosure, 2022, *Mosman Flora and Fauna Survey 2022 V3*, Report to Mosman Municipal Council. Sydney

Report compiled by Ecosure Pty Ltd

ABN: 63 106 067 976

admin@ecosure.com.au www.ecosure.com.au

PR6939-RE.Mosman Flora and Fauna Survey 2021 Volume 3 FINAL

Adelaide

PO Box 145
Pooraka SA 5095
P 1300 112 021
M 0407 295 766

Brisbane

PO Box 675
Fortitude Valley QLD 4006
P 07 3606 1030

Coffs Harbour

PO Box 4370
Coffs Harbour Jetty NSW 2450
P 02 5621 8103

Gladstone

PO Box 5420
Gladstone QLD 4720
P 07 4994 1000

Gold Coast

PO Box 404
West Burleigh QLD 4219
P 07 5508 2046

Rockhampton

PO Box 235
Rockhampton QLD 4700
P 07 4994 1000

Sunshine Coast

PO Box 1457
Noosaville QLD 4566
P 07 5357 6019

Sydney

PO Box 880
Surry Hills NSW 2010
P 1300 112 021

Townsville

PO Box 2335
Townsville QLD 4810
P 1300 112 021



© Ecosure Proprietary Limited 2022

Commercial in confidence. The information contained in this document produced by Ecosure Pty Ltd is solely for the use of the Client identified on the cover sheet for the purpose for which it has been prepared and Ecosure Pty Ltd undertakes no duty to or accepts any responsibility to any third party who may rely upon this document. All rights reserved. No section or element of this document may be removed from this document, reproduced, electronically stored or transmitted in any form without the written permission of Ecosure Pty Ltd.