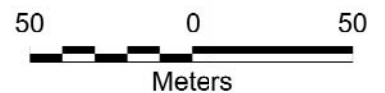




% INDIGENOUS NATIVE VEGETATION COVER

- | | | | |
|---|------------|---|-----------------------------------|
|  | Open Space |  | Bushland Reserves Boundary |
|  | 30-69 |  | Stormwater Pipes & Drainage Lines |
|  | 70-89 | | |
|  | 90 + | | |



Mosman
Municipal Council

DISCLAIMER

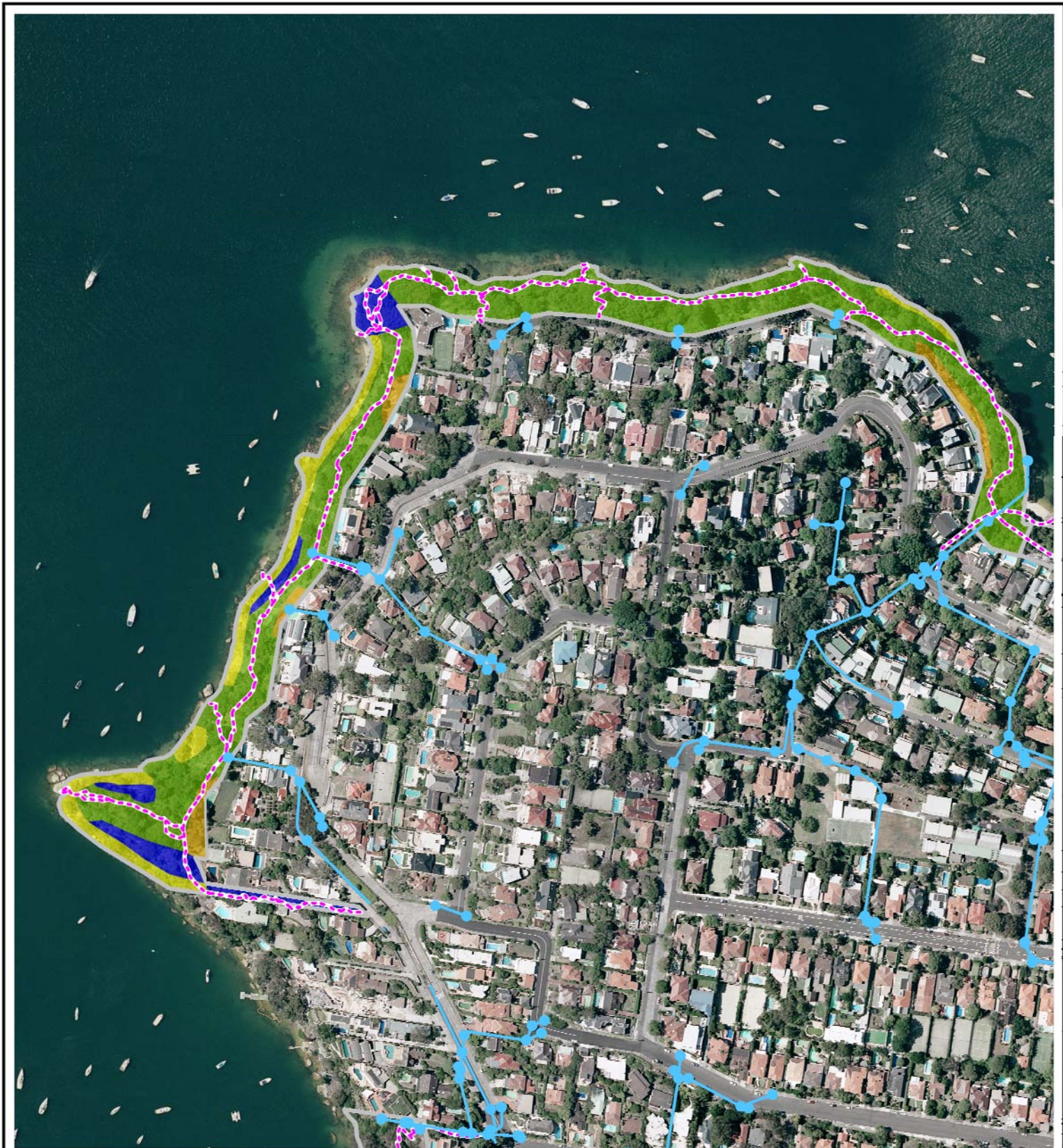
This map has been compiled from various sources and the publisher and/or contributors accept no responsibility for any injury, loss or damage arising from its use or error or omissions therein.

Copyright Mosman Municipal Council & LPMA 2011
AUSIMAGE - Orthorectified Imagery, Flown January 2009
Copyright Sinclair Knight and Merz

Drawn by JL Juns 2011
Q:\Jobs 2011\Bsiland_2011_2021_MHW_The_Spit

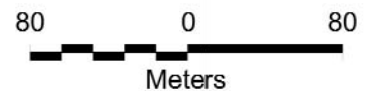
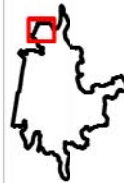


**Bushland Contract 2011-2021
Middle Harbour West
The Spit**



% INDIGENOUS NATIVE VEGETATION COVER

- | | | | |
|---|------------|---|-----------------------------------|
|  | Open Space |  | Bushland Reserves Boundary |
|  | 30-69 |  | Stormwater Pipes & Drainage Lines |
|  | 70-89 |  | Walking Tracks |
|  | 90 + | | |



Mosman
Municipal Council

DISCLAIMER

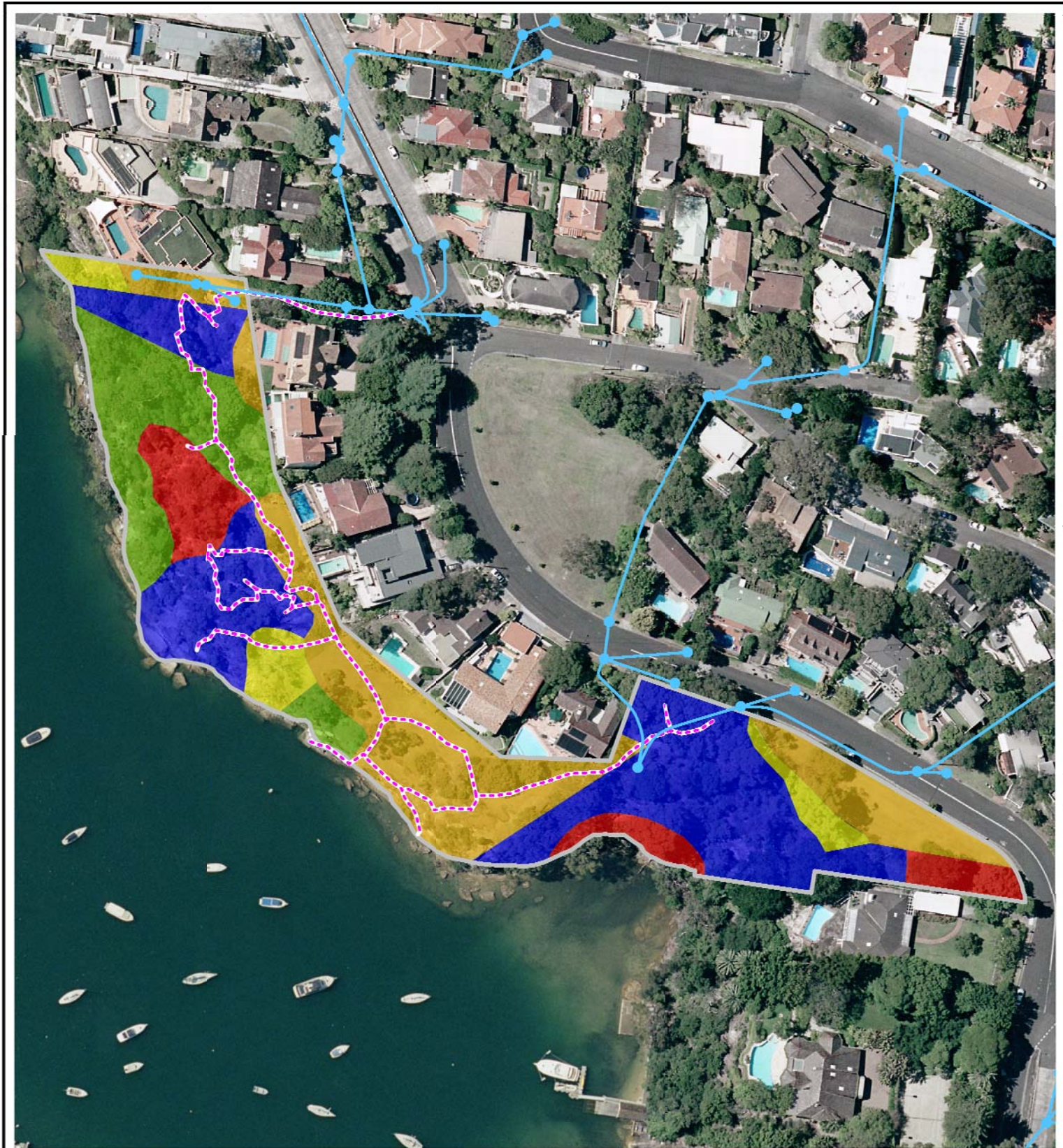
This map has been compiled from various sources and the publisher and/or contributors accept no responsibility for any injury, loss or damage arising from its use or error or omissions therein.

Copyright Mosman Municipal Council & LPMA 2011
AUSIMAGE - Orthorectified Imagery, Flown January 2009
Copyright Sinclair Knight and Merz

Drawn by JL Juns 2011
Q:\Jobs 2011\Bsiland_2011_2021_MHW_Quakers_Hat_Park

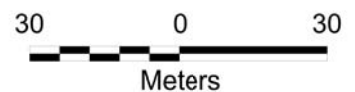


**Bushland Contract 2011-2021
Middle Harbour West
Quakers Hat Park**



% INDIGENOUS NATIVE VEGETATION COVER

- | | |
|--|---|
|  Open Space |  90 + |
|  <30 |  Bushland Reserves Boundary |
|  30-69 |  Stormwater Pipes & Drainage Lines |
|  70-89 |  Walking Tracks |



Mosman
Municipal Council

DISCLAIMER

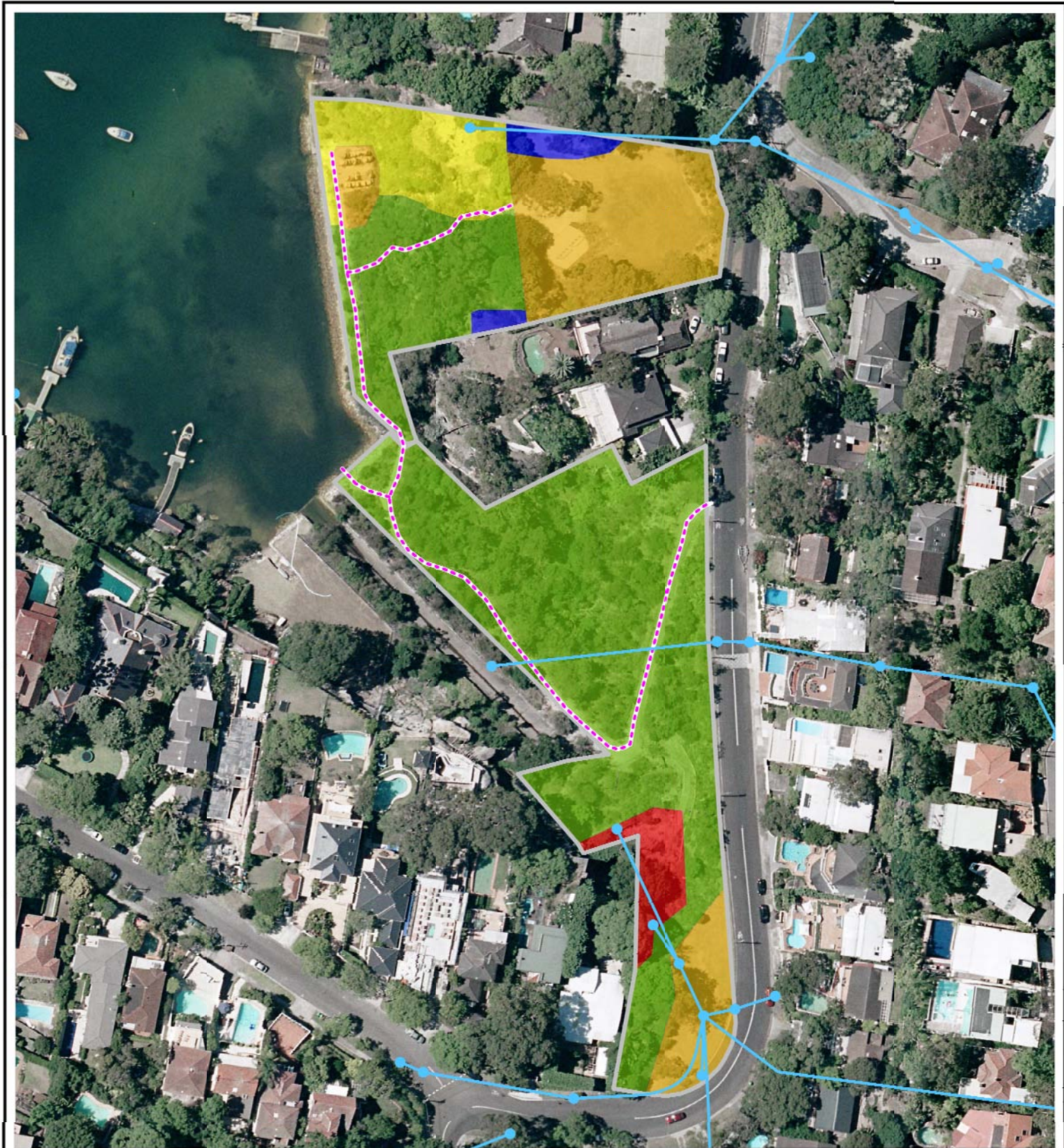
This map has been compiled from various sources and the publisher and/or contributors accept no responsibility for any injury, loss or damage arising from its use or error or omissions therein.

Copyright Mosman Municipal Council & LPMA 2011
AUSIMAGE - Orthorectified Imagery, Flown January 2009
Copyright Sinclair Knight and Merz

Drawn by JL Juns 2011
Q:\Jobs 2011\Bsiland_2011_2021_MHW_Quakers_Hat_North

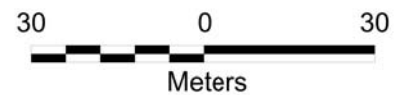


**Bushland Contract 2011-2021
Middle Harbour West
Quakers Hat North**



% INDIGENOUS NATIVE VEGETATION COVER

- | | |
|--|---|
|  Open Space |  90 + |
|  <30 |  Bushland Reserves Boundary |
|  30-69 |  Stormwater Pipes & Drainage Lines |
|  70-89 |  Walking Tracks |



Mosman
Municipal Council

DISCLAIMER

This map has been compiled from various sources and the publisher and/or contributors accept no responsibility for any injury, loss or damage arising from its use or error or omissions therein.

Copyright Mosman Municipal Council & LPMA 2011
AUSIMAGE - Orthorectified Imagery, Flown January 2009
Copyright Sinclair Knight and Merz

Drawn by J.L. Juns 2011
Q:\Jobs 2011\Bsiland_2011_2021_MHW_Quakers_Hat_South

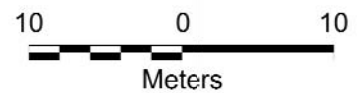


**Bushland Contract 2011-2021
Middle Harbour West
Quakers Hat South**



% INDIGENOUS NATIVE VEGETATION COVER

- | | |
|--|---|
|  Open Space |  90 + |
|  <30 |  Bushland Reserves Boundary |
|  30-69 |  Stormwater Pipes & Drainage Lines |



Mosman
Municipal Council

DISCLAIMER

This map has been compiled from various sources and the publisher and/or contributors accept no responsibility for any injury, loss or damage arising from its use or error or omissions therein.

Copyright Mosman Municipal Council & LPMA 2011
AUSIMAGE - Orthorectified Imagery, Flown January 2009
Copyright Sinclair Knight and Merz

Drawn by J.L. Juns 2011
Q:\Jobs 2011\Bsiland_2011_2021_MHW_Joels_Reserve



**Bushland Contract 2011-2021
Middle Harbour West
Joels Reserve**