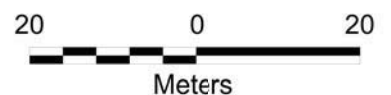




% INDIGENOUS NATIVE VEGETATION COVER

- | | | | |
|---|------------|---|-----------------------------------|
|  | Open Space |  | 90 + |
|  | <30 |  | Bushland Reserves Boundary |
|  | 30-69 |  | Stormwater Pipes & Drainage Lines |
|  | 70-89 |  | Walking Tracks |



Mosman
Municipal Council

DISCLAIMER

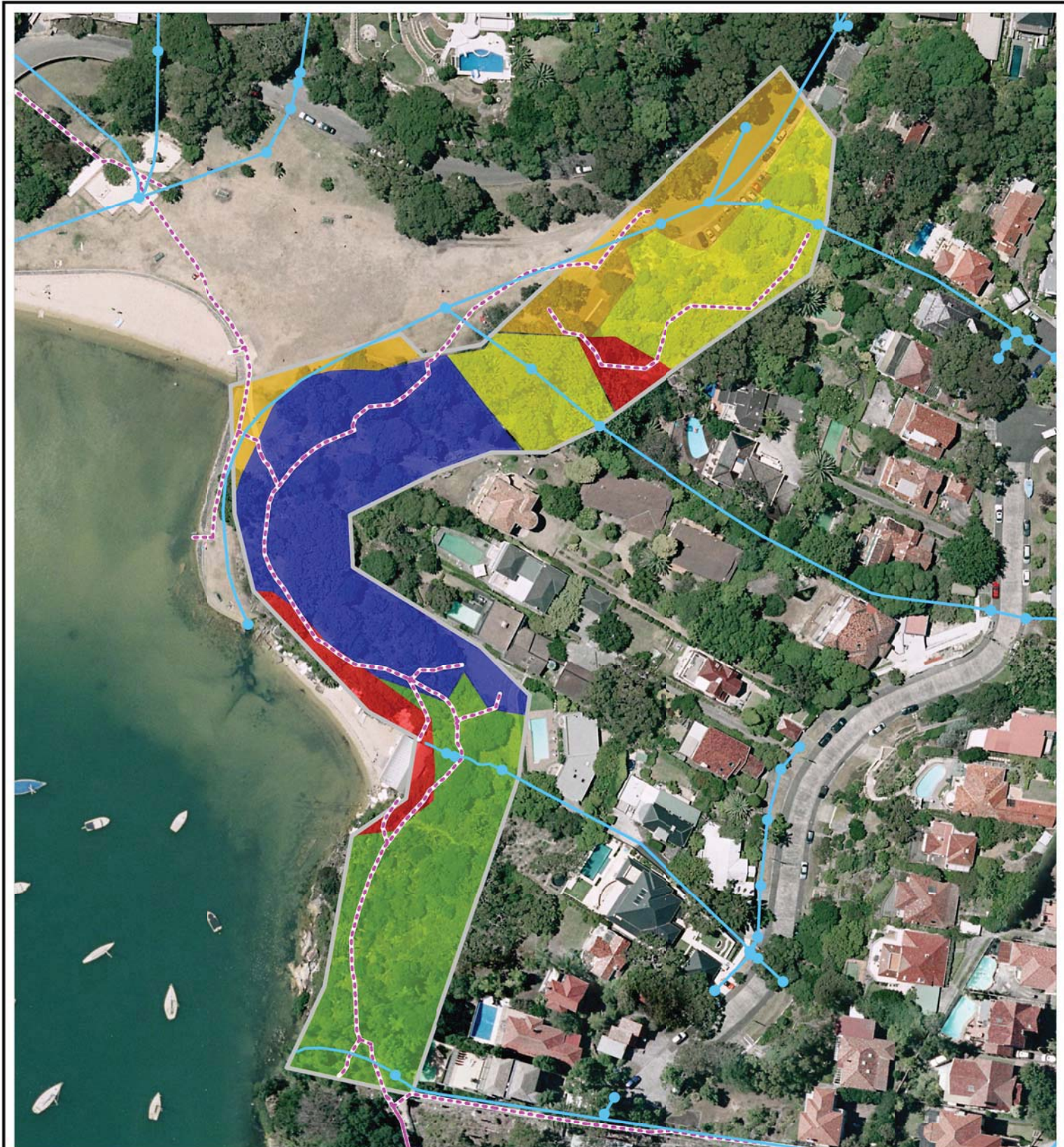
This map has been compiled from various sources and the publisher and/or contributors accept no responsibility for any injury, loss or damage arising from its use or error or omissions therein.

Copyright Mosman Municipal Council & LPMA 2011
AUSIMAGE - Orthorectified Imagery, Flown January 2009
Copyright Sinclair Knight and Merz

Drawn by J.L. Juns 2011
Q:\Jobs 2011\Bsiland_2011_2021_Pt_Jackson

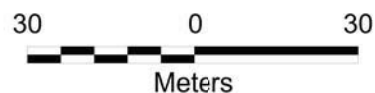


**Bushland Contract 2011-2021
Port Jackson Catchment
Sirius Park West**



% INDIGENOUS NATIVE VEGETATION COVER

- | | | | |
|---|------------|---|-----------------------------------|
|  | Open Space |  | 90 + |
|  | <30 |  | Bushland Reserves Boundary |
|  | 30-69 |  | Stormwater Pipes & Drainage Lines |
|  | 70-89 |  | Walking Tracks |



Mosman
Municipal Council

DISCLAIMER

This map has been compiled from various sources and the publisher and/or contributors accept no responsibility for any injury, loss or damage arising from its use or error or omissions therein.

Copyright Mosman Municipal Council & LPMA 2011
AUSIMAGE - Orthorectified Imagery, Flown January 2009
Copyright Sinclair Knight and Merz

Drawn by J.L. Juns 2011
Q:\Jobs 2011\Bsiland_2011_2021_Pt_Jackson

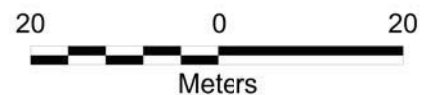


**Bushland Contract 2011-2021
Port Jackson Catchment
Sirius Park East**



% INDIGENOUS NATIVE VEGETATION COVER

- <30
 - 30-69
 - 70-89
 - 90 +
- Contract Boundary
 - Stormwater Pipes & Drainage Lines
 - Walking Tracks



Mosman
Municipal Council

DISCLAIMER

This map has been compiled from various sources and the publisher and/or contributors accept no responsibility for any injury, loss or damage arising from its use or error or omissions therein.

Copyright Mosman Municipal Council & LPMA 2011
 AUSIMAGE - Orthorectified Imagery, Flown January 2009
 Copyright Sinclair Knight and Merz

Drawn by J.L. Juns 2011
 Q:\Jobs 2011\Bsiland_2011_2021_Pt_Jackson

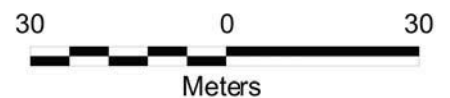


**Bushland Contract 2011-2021
 Port Jackson Catchment
 Curraghbeena Park**



% INDIGENOUS NATIVE VEGETATION COVER

- | | | | |
|---|------------|---|-----------------------------------|
|  | Open Space |  | 90 + |
|  | <30 |  | Bushland Reserves Boundary |
|  | 30-69 |  | Stormwater Pipes & Drainage Lines |
|  | 70-89 |  | Walking Tracks |



Mosman
Municipal Council

DISCLAIMER

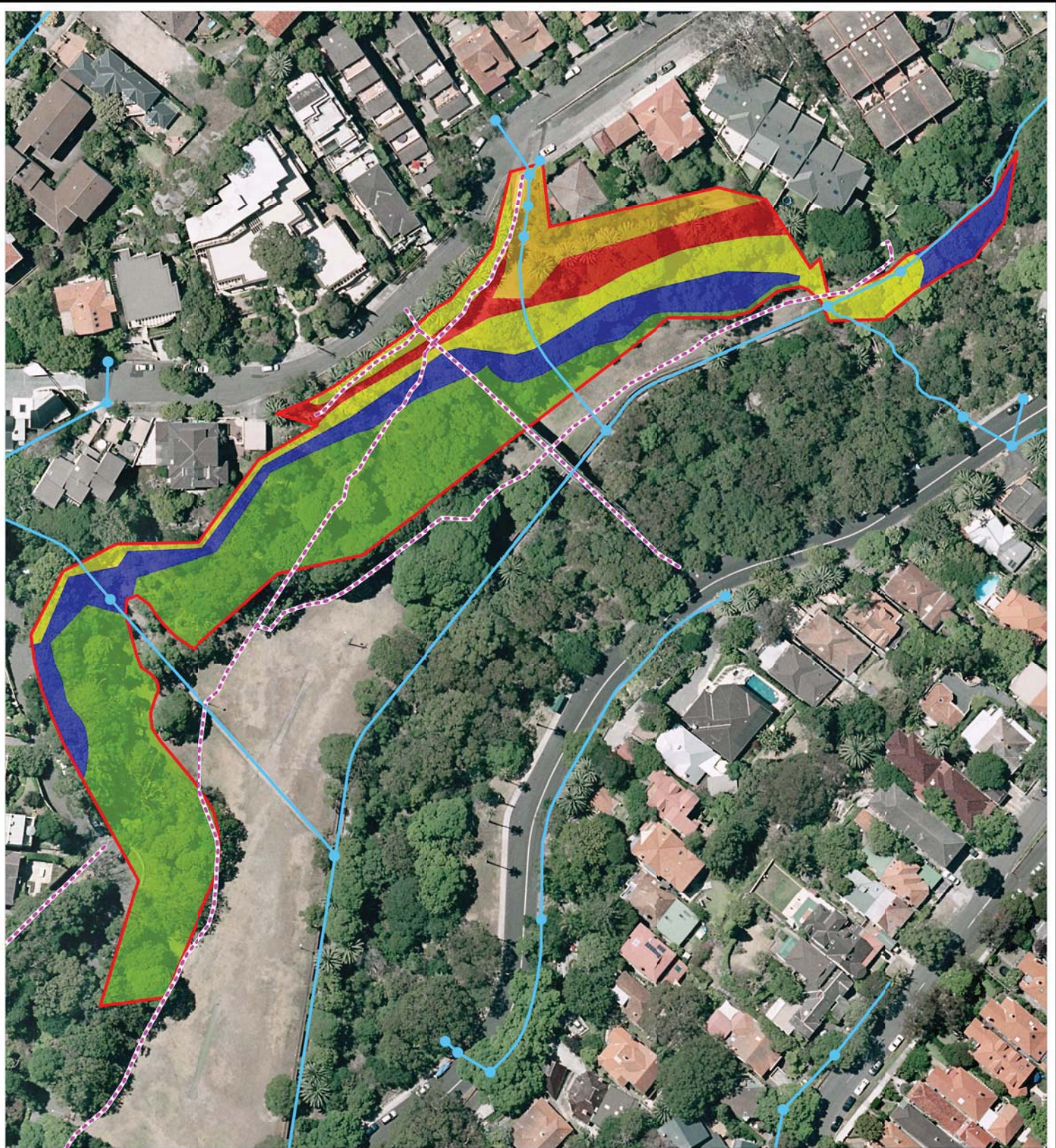
This map has been compiled from various sources and the publisher and/or contributors accept no responsibility for any injury, loss or damage arising from its use or error or omissions therein.

Copyright Mosman Municipal Council & LPMA 2011
AUSIMAGE - Orthorectified Imagery, Flown January 2009
Copyright Sinclair Knight and Merz

Drawn by J.L. Juns 2011
Q:\Jobs 2011\Bsiland_2011_2021_Pt_Jackson

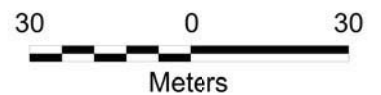


**Bushland Contract 2011-2021
Port Jackson Catchment
Clifton Gardens**



% INDIGENOUS NATIVE VEGETATION COVER

- | | |
|--|---|
|  Open Space |  90 + |
|  <30 |  Contract Boundary |
|  30-69 |  Stormwater Pipes & Drainage Lines |
|  70-89 |  Walking Tracks |



Mosman
Municipal Council

DISCLAIMER

This map has been compiled from various sources and the publisher and/or contributors accept no responsibility for any injury, loss or damage arising from its use or error or omissions therein.

Copyright Mosman Municipal Council & LPMA 2011
AUSIMAGE - Orthorectified Imagery, Flown January 2009
Copyright Sinclair Knight and Merz

Drawn by J.L. Juns 2011
Q:\Jobs 2011\Bsiland_2011_2021_Pt_Jackson



**Bushland Contract 2011-2021
Port Jackson Catchment
Reid Park**

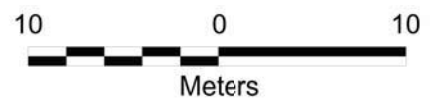


% INDIGENOUS NATIVE VEGETATION COVER

30-69

Bushland Reserves Boundary

Stormwater Pipes & Drainage Lines



Mosman
Municipal Council

DISCLAIMER

This map has been compiled from various sources and the publisher and/or contributors accept no responsibility for any injury, loss or damage arising from its use or error or omissions therein.

Copyright Mosman Municipal Council & LPMA 2011
 AUSIMAGE - Orthorectified Imagery, Flown January 2009
 Copyright Sinclair Knight and Merz

Drawn by J.L. Juno 2011
 Q:\Jobs 2011\Bsiland_2011_2021_Pt_Jackson

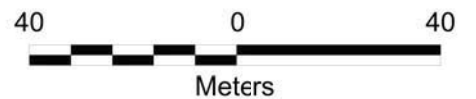


**Bushland Contract 2011-2021
 Port Jackson Catchment
 Mosman Bay Creek**



% INDIGENOUS NATIVE VEGETATION COVER

- | | | | |
|---|-------|---|-----------------------------------|
|  | 30-69 |  | Bushland Reserves Boundary |
|  | 70-89 |  | Stormwater Pipes & Drainage Lines |
|  | 90 + |  | Walking Tracks |



Mosman
Municipal Council

DISCLAIMER

This map has been compiled from various sources and the publisher and/or contributors accept no responsibility for any injury, loss or damage arising from its use or error or omissions therein.

Copyright Mosman Municipal Council & LPMA 2011
 AUSIMAGE - Orthorectified Imagery, Flown January 2009
 Copyright Sinclair Knight and Merz

Drawn by J.L. Juns 2011
 Q:\Jobs 2011\Bsiland_2011_2021_Pt_Jackson

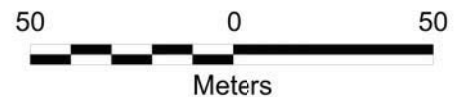


**Bushland Contract 2011-2021
 Port Jackson Catchment
 Morella Road**



% INDIGENOUS NATIVE VEGETATION COVER

- | | |
|--|---|
|  Open Space |  90 + |
|  <30 |  Bushland Reserves Boundary |
|  30-69 |  Stormwater Pipes & Drainage Lines |
|  70-89 |  Walking Tracks |



Mosman
Municipal Council

DISCLAIMER

This map has been compiled from various sources and the publisher and/or contributors accept no responsibility for any injury, loss or damage arising from its use or error or omissions therein.

Copyright Mosman Municipal Council & LPMA 2011
AUSIMAGE - Orthorectified Imagery, Flown January 2009
Copyright Sinclair Knight and Merz

Drawn by J.L. Juns 2011
Q:\Jobs 2011\Bsiland_2011_2021_Pt_Jackson



**Bushland Contract 2011-2021
Port Jackson Catchment
Harnett Park**