

NEW RESIDENTS GUIDE TO MOSMAN

MOSMAN
COUNCIL

2022


WELCOME TO MOSMAN

09/
23v3

NEW RESIDENTS GUIDE TO MOSMAN



Image:
Leah O'Brien, *Sailboats at Balmoral*



**From the red-tiled roofs of comfort,
And the gardens and lawns of taste;
Safe from the city's clamour,
And safe from the city's haste;
From a vision of range and ocean,
And a hint of the sea-cliffs grey,
Look down from the heights of Mosman
To the depths of Mosman's Bay.**

Mosman's Bay, Henry Lawson

OSW

1

Welcome to Mosman

6 Welcome

- 6 Acknowledgement of Country
- 7 Stay Informed
- 7 Connect Online
- 8 Apps & Websites

20 Recreation

- 20 Beaches
- 20 Parks & Reserves
- 20 Bushland
- 21 Sports Grounds
- 21 Playgrounds
- 22 Walking
- 22 Cycling
- 24 Sailing & Boating

26 Events

- 26 Festival of Mosman
- 26 Pet's Day Out
- 26 Art Prizes & Exhibitions
- 27 Markets
- 27 Rapt
- 27 Hunter Valley Uncorked
- 27 Mudjee Wine & Food Fair
- 27 Mini-Mos Community Fun Run & Fair
- 27 Balmoral Burn
- 27 Children's Day

2

Your Local Area

13 Mosman

14 Aboriginal Heritage

- 14 Pre 1788
- 14 People
- 14 Bungaree
- 14 Sites
- 15 Protection

16 Facilities

- 16 Barry O'Keefe Library
- 16 Mosman Art Gallery
- 17 Mosman Youth Centre
- 17 Mosman Square Seniors Centre
- 17 Mosman Swim Centre
- 19 Venues for Hire

3

Need to Know

31 Moving In

- 33 Checklist

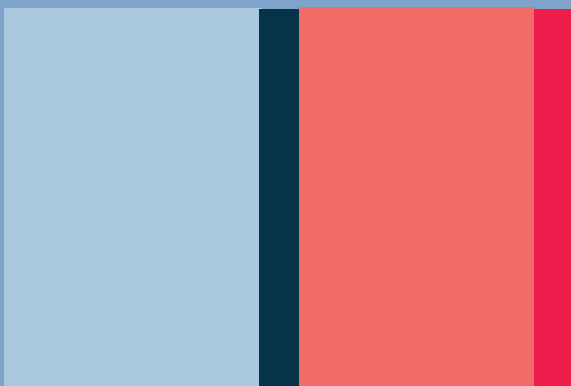
34 Waste

- 34 General Waste
- 34 Recycling
- 34 Green Waste
- 34 Community Recycling Centre
- 34 E-waste
- 35 Biennial Clean Ups
- 35 Collection Calendar
- 35 Tip (Self Disposal)
- 35 Illegal Dumping

36 Recycling Guide

39 Pets

- 39 Responsible Ownership
- 39 Dog Walking
- 39 Pet's Day Out



40 Getting Around

- 40 Public Carparks
- 40 Parking Permits
- 41 A to B Mosman
- 41 Public Transport
- 41 Car Share
- 41 Electric Vehicle Charging

43 Rates

- 43 Making Payments

44 Property

- 44 Development
- 44 Mosman Design Awards
- 44 Heritage Advice
- 44 Pools & Spas
- 44 Trees

46 Electoral Info

- 47 Local
- 47 State
- 47 Federal

56 Help at Hand

- 56 Migrant & ESL Services
- 56 People with Disability
- 56 Mosman Carers
- 56 Accessibility

58 Volunteering

- 58 Community Care
- 58 Environment Management
- 59 Mosman Library Services
- 59 Mosman Art Gallery

60 Business

- 60 Mosman Chamber of Commerce
- 60 Food Safety & Public Health
- 60 Sustainability

63 Community Wellbeing

- 63 Crime Prevention
- 63 Domestic Violence
- 63 Smoke Free Zones



Easy Directory

74 Contacts

- 74 Mosman Council
- 74 Emergency Services

76 A-Z

78 Map



Here for You

50 Families

- 50 New Parents
- 50 Connections Playgroup
- 50 Childcare & Preschools
- 51 Before & After School Care
- 51 Vacation Care
- 51 Playgrounds
- 51 School Holidays

52 Young People

- 52 Youth Centre
- 53 Events
- 53 Volunteering Programs
- 53 Parent & Carer Support

54 Age Friendly

- 54 Seniors Centre
- 54 Mosman Meals
- 54 Social Lunches
- 55 Community Transport
- 55 Social Support
- 55 Men's Shed



Your Council

66 Council

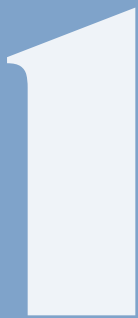
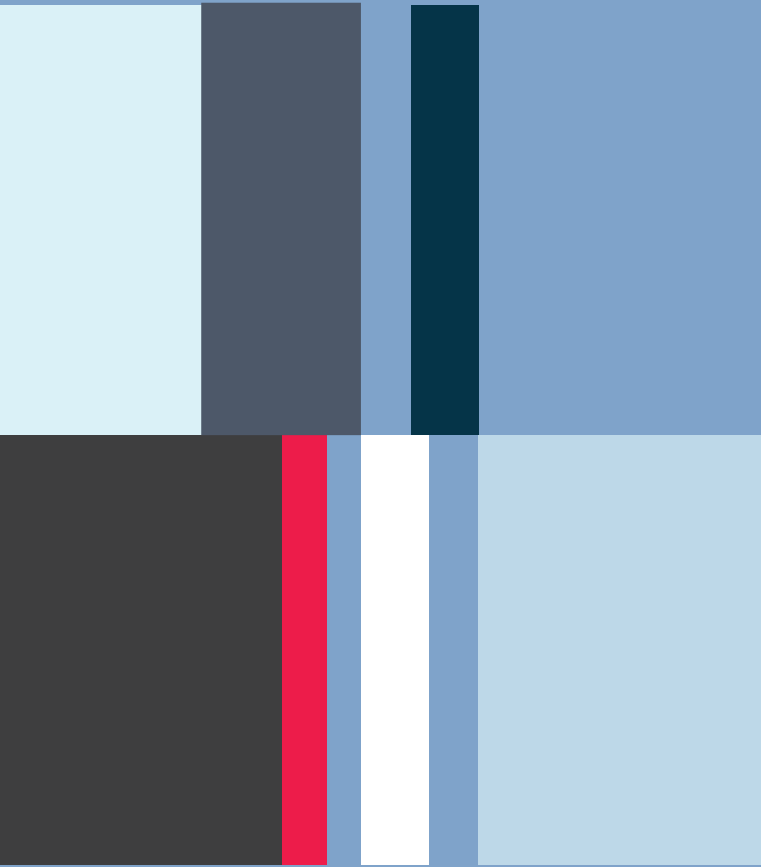
- 66 Vision
- 66 Values
- 67 Serving You
- 67 Strategic Planning
- 67 Civic Centre
- 67 Justice of the Peace
- 67 Rangers

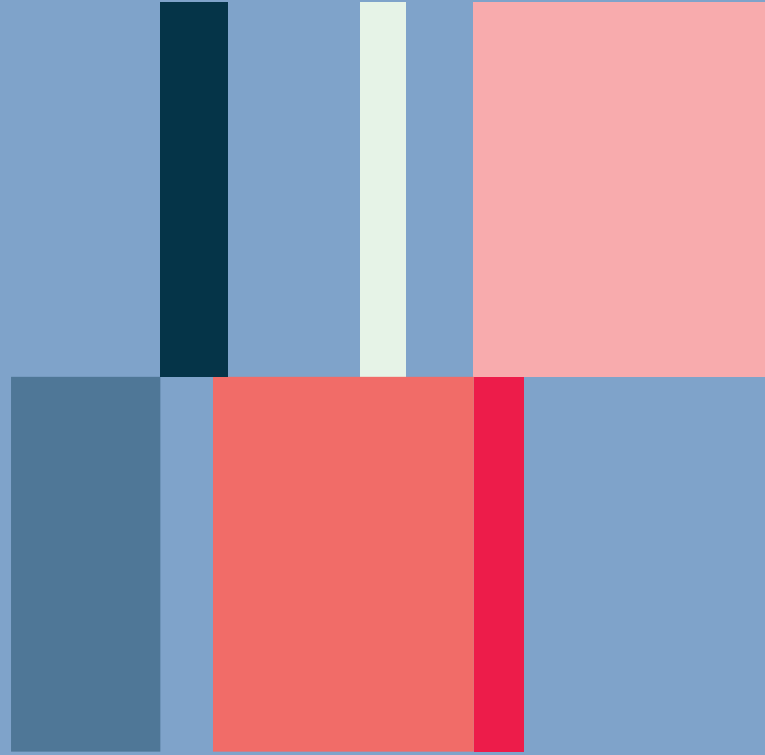
68 Organisation

- 68 Meetings
- 68 Elections
- 68 Mayor & Councillors

71 Have Your Say

- 71 Consultation
- 71 Council Committees





WELCOME TO MOSMAN



WELCOME

This is a go-to guide for Mosman, full of useful information for residents. From walking trails to waste collection and everything in between, covering everyday basics through to the abundant fun and recreational activities Mosman offers, you will find it here in easy to navigate sections.

Acknowledgement of Country

Mosman Council acknowledges the Borogegal and Cammeraigal people as the traditional custodians of this land. We pay our respects to Elders of the past and present and to those of the future and acknowledge their spiritual connection to Country.



Stay Informed

Stay informed about what's happening in the area through Mosman Council's website and by downloading Council's free mobile app, MyMosman. These will give you a wealth of up-to-the-minute information on local events, activities, services and programs.

For the latest news and updates you can also follow Council on Facebook, Instagram, Twitter and YouTube, and have special interest e-newsletters delivered straight to your inbox by subscribing at mosman.nsw.gov.au/subscribe

Details on upcoming community events, activities and services can also be found in Council's regular MosmanNOW section in the local newspaper, the *Mosman Daily*, and on community noticeboards located outside the Civic Centre, Mosman Art Gallery and Barry O'Keefe Library.

Connect Online



Website - mosman.nsw.gov.au

Facebook - facebook.com/mosmancouncil

Instagram - [@mosmancouncil](https://instagram.com/mosmancouncil)

Twitter - twitter.com/mosmancouncil

YouTube - youtube.com/mosmancouncil

MyMosman App - free from Google Play and the App Store

APPS & WEBSITES

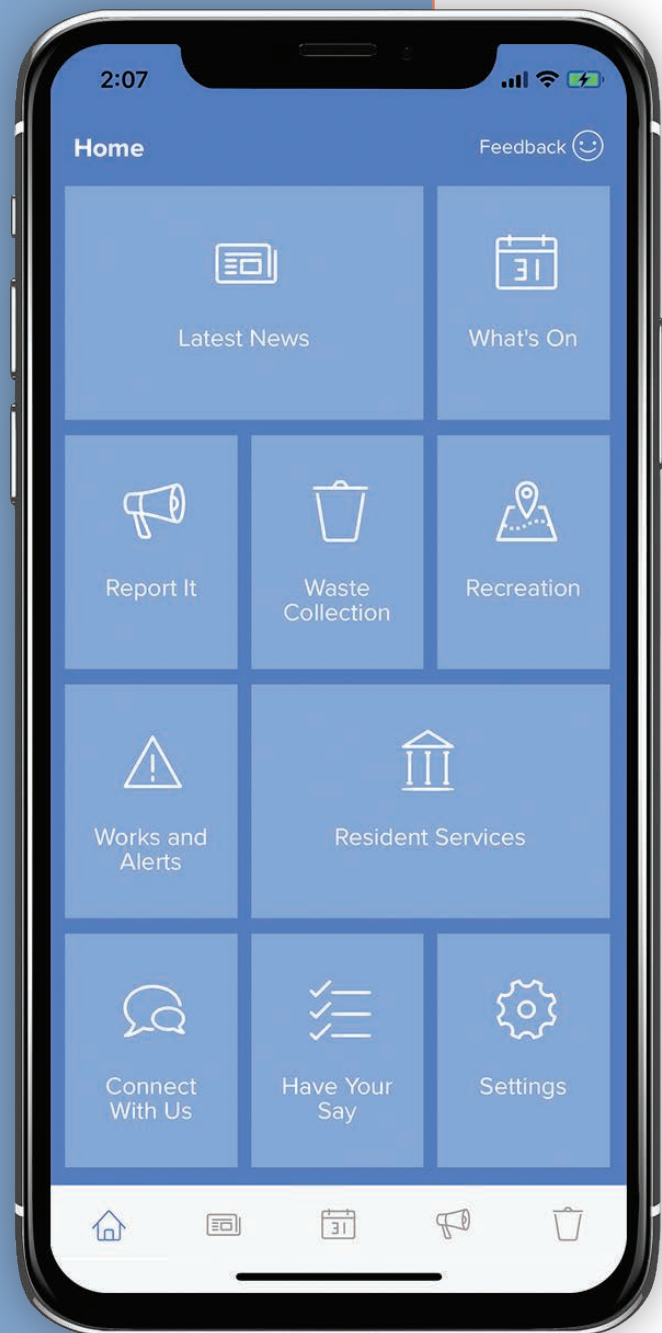
Mosman Council has a suite of mobile apps to make life easier and give residents access to useful information on the go. They are simple to use, available for both Android and iOS, and free to download from Google Play and the App Store.

You can also find all you want to know about local events, programs, services and community facilities through Council's main websites.

Council also has payment options and forms for numerous services available online.

Council's free public Wi-Fi network covers key areas of Mosman's main shopping precincts including Mosman Square and Village Green, Barry O'Keefe Library and outside Mosman Art Gallery, Spit Road to the B1 bus interchanges and along the Military Road retail strip stretching from Cowles Road to Raglan Street.

To connect, find and join the 'Mosman_Free_Wifi' network using your Wi-Fi enabled phone, tablet or notebook computer.



MY MOSMAN



MyMosman

MyMosman provides residents with convenient and quick links to a range of information and services. Handy features include:

- Personalised waste and recycling calendars, with collection reminders
- Notifications of local works and alerts
- Interactive maps and information for reserves, beaches and dog walking areas
- A function for reporting local issues
- The latest news and events
- Direct links to pay rates and renew parking permits
- Search for Development Applications
- Direct link to provide feedback for community consultations



Mosman Library Service

The Mosman Library Service app makes it easier than ever to access library services including placing holds, renewing loans, managing your account, searching the collection and accessing eBooks, movies and more from your Apple or Android phone or device.

Once logged in, the app recreates your library card's barcode, meaning as long as you have your phone or tablet, you won't need your physical card. You can also link and manage your family members' cards on your App.



Trees Mosman

Created by Council's tree experts, Trees Mosman offers a simplified way to submit a tree permit application, request a street tree planting, report suspicious tree work and check tree protection zones when planning construction or development works.

With high quality images and detailed descriptions of exempt species, frequently asked questions, and links for tree-related information and issues, it provides an easy and efficient source of information for tree management.



Mosman Council

mosman.nsw.gov.au

Visit our website for detailed information on resident services, community services and facilities, recreational activities, planning and development, local environment management, elected Councillors, Council plans and policies, and local history and demographics.



Events Mosman

events.mosman.nsw.gov.au

There is always plenty happening in Mosman for residents including outdoor events, exhibitions, workshops and activities. The best source of what's on in the area is the Events Mosman website. This features a day-by-day calendar of what's on at various locations for all ages with details, locations and booking links. You can search by date and genre, share events with friends, and add your own community event to the listings.



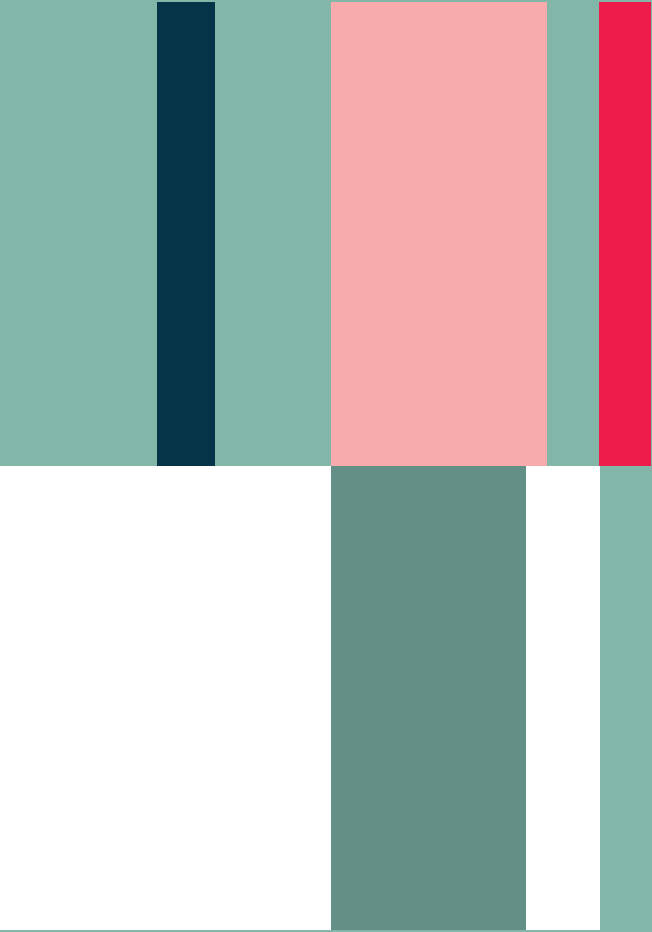
Mosman Art Gallery

mosmanartgallery.org.au

Mosman Art Gallery presents dynamic exhibitions, inspiring programs and cross-generational engagement with a range of visual arts.

Find out about current and forthcoming exhibitions and events hosted at our leading regional gallery which is also home to the renowned Mosman Art Collection.

Book online to attend an event or subscribe to the gallery's regular e-newsletters.



2



**YOUR
LOCAL
AREA**





MOSMAN

Mosman, originally home to the Borogegal and Cammeragal people, is one of Australia's most beautiful and liveable suburbs.

Surrounded by scenic foreshores and national parks on Sydney Harbour, it's just 8km from the centre of Sydney and includes the localities of Balmoral, Mosman Bay, Beauty Point, Clifton Gardens and Georges Heights.

Characterised by spectacular water views, a mix of heritage and contemporary architecture, and a close-knit village atmosphere, Mosman connects residents with a friendly community and the outdoors as the bustle of Australia's largest city gives way to beachside reserves, walking trails and leafy streets.

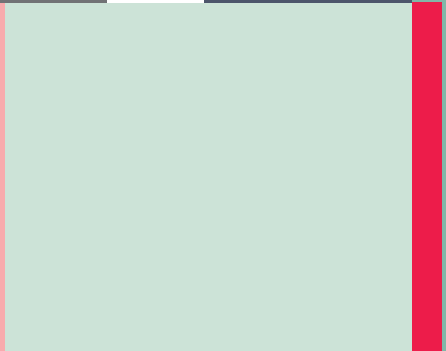
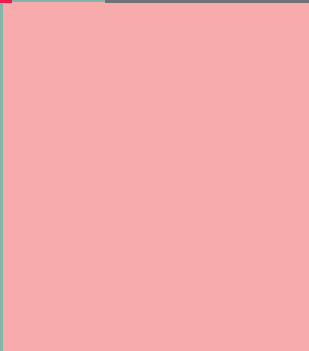
Calm-water beaches at Balmoral, Chinamans and Clifton Gardens, and views out past Middle Head, hint at a maritime heritage that dates back to the eighteenth century, most visible today at Georges Heights' old military fortifications, and the active Royal Australian Naval base, HMAS Penguin.

Marinas, sailing and rowing clubs dot the area's foreshores, and various community and sporting clubs offer plenty of opportunities to stay active and connect with fellow residents.

The Military Road shopping high street includes high-end boutiques and popular brand retailers, and delightful smaller precincts include Spofforth Street, Lower Avenue Road, The Spit, Balmoral Beach and Headland Park. Dozens of cafes and restaurants can be found throughout the area, with something for every taste.

Mosman is also home to the famous Taronga Zoo and offers a rich and impressive annual program of cultural and community events, from exhibitions and festivals, to outdoor cinemas, music concerts, and monthly artisan markets.

Residents are warmly invited to enjoy all that Mosman has to offer.



ABORIGINAL HERITAGE

Mosman has a rich Aboriginal heritage with over 100 recorded sites. The land was long occupied by First Nations people, with evidence of their life in the Sydney region dating as far back as 15,000 to 40,000 years ago. The footprint of their lives, culture, and beliefs is still evident in local rock art and middens.

Aboriginal heritage is important to us all. Through this heritage, we can begin to understand how the original custodians lived in harmony with nature and their environment. We can learn important lessons about sustainability and conservation. As a community, we can develop our appreciation and respect for Aboriginal culture and heritage and how this informs our future.



Pre 1788

Before European arrival in 1788, Indigenous culture in coastal Sydney was rich and complex with many languages and customs and strong links to the land. Sadly, with the European arrival, loss of traditional hunting lands, and introduction of new diseases, the local Aboriginal population was decimated. The heritage sites provide a valuable legacy and we must all take responsibility to protect them.

People

People belonged to small groups or clans which connected them spiritually to the land and each other. From the available information, it is understood there were two main clans in Mosman numbering a few thousand at the time of European arrival. They hugged the coastline and as coastal groups, were mainly fishers, hunters and gatherers:

- the Cammeraygal (or Cammeraiagal) who lived on the north shore of Port Jackson known as the country of Cammeray and bay of Cameera;
- the Borogegal who lived east of the Cammeraygal but also on the north shore of Port Jackson and the western side of Middle Harbour, and were particularly associated with Booragy//Burogy (now known as Bradleys Head).

The Indigenous people camped in areas that provided shelter and with good food and water supplies. The shelters included rock overhangs, or were constructed from bark, branches, and leaves. The people

ate well with a rich diet of fish, crabs and crayfish, shellfish, seal, dugong, eels, kangaroo, wallaby, possum, snakes, lizards, birds, bird eggs, native edible fruit, seeds, berries, roots and native honey.

They used a variety of tools with fishing undertaken with spears, shell hooks and lines and fish traps. Hunters used spears, clubs, traps and snares. Food was cultivated and gathered using wooden digging sticks and carried in net bags or bark baskets.

Bungaree

With the European arrival, the landscape changed quickly with parts of Mosman used for whaling and farming. In 1815, a farm was established on the orders of Governor Macquarie at Middle Head for Indigenous families with an Aboriginal man named Bungaree. As well as being famous for circumnavigating Australia with Matthew Flinders, Bungaree also acted as an effective intermediary. The aim of the farm was to 'acculturate' a group of 16 Indigenous families to European life and farming. Although Bungaree remained for a short time, most of the families quickly abandoned the farm.

Sites

Local indigenous sites encompass rock art, middens and burials.

Middens are collections of discarded materials building up to a form of deposit that survives to this day. Shell, animal bone, ochre, stone artefacts, charcoal and

ABORIGINAL HERITAGE



even human remains may be present in middens. Most in coastal Sydney are shell middens close to the foreshore.

Rock art includes engravings and pigment art and is mostly of animal or human figures. Engravings are some form of image that has been carved or pecked into a rock surface. The Hawkesbury sandstone in the region provides an excellent surface for engravings. Two-thirds of the engravings in Mosman are of marine animals.

Pigment art is the application of a material such as ochre, charcoal or pipeclay to rock or stone. It is often found in shelter sites. In Mosman, most pigment art is of hand stencils with others of kangaroos and wallabies.

Burials are locations where human skeletal remains are present and occurred on land given special status. There are three recorded burial sites in Mosman.



Protection

The natural deterioration of archeological sites may take thousands of years but deliberate or accidental human acts can speed this up and result in loss of these sites for future generations. Indigenous heritage sites should not be walked on or tampered with, including middens and rock art. All Aboriginal sites are protected under Commonwealth and State laws and it is illegal to destroy, damage, or remove Aboriginal heritage items. Council, the National Parks and Wildlife Service, Sydney Harbour Federation Trust and Northern Sydney Reconciliation Network work collaboratively with the Metropolitan Local Aboriginal Land Council to protect and promote Aboriginal culture and heritage.

Residents can also enjoy learning and sharing contemporary Aboriginal culture through the collections and exhibitions of Mosman Art Gallery and the local and regional events held during the Gai-mariagal Festival between May and July each year.

To find out more about Mosman's Aboriginal heritage, visit Barry O'Keefe Library or Council's website for *Aboriginal Heritage of Mosman* (NPWS 2010), which Council acknowledges as the source of this summarised information.



FACILITIES

Mosman offers residents a range of centrally located community facilities.



Barry O'Keefe Library

Mosman Library Service provides lending and information services, access to an extensive range of resources including a unique local history collection and runs a busy program of activities and events. This includes story time sessions for babies and preschoolers, holiday workshops for children and teens, a visiting authors program, and information sessions and workshops for adults.

Membership cards entitle holders to borrow from Shorelink Library Network libraries in Mosman, Lane Cove and North Sydney (Stanton Library).

Members can borrow up to 12 items for three weeks, (apart from DVDs which are for two weeks), and a selection of the latest bestsellers and popular new books can be borrowed for seven days without reservation through the Fast Reads service. Overdue fees apply for late returns.

The library's **Creation Space** learning lab focuses on 'STEAM' programs and activities for all ages.

Subscribe to Mosman Library Service's e-newsletter for the latest news and events for adults, teens and children.

Opening hours

Monday, Wednesday, Friday:
9.30am-5.30pm
Tuesday and Thursday: 9.30am-9.00pm
Saturday and Sunday: 10.00am-4.00pm

605 Military Rd, Mosman
Tel: (02) 9978 4091
Email: library@mosman.nsw.gov.au
Facebook: [facebook.com/mosmanlibrary](https://www.facebook.com/mosmanlibrary)
Instagram: @mosmanlibrary
Twitter: twitter.com/mosmanlibrary

mosman.nsw.gov.au/library



Mosman Art Gallery

Mosman Art Gallery has been the area's celebrated artistic hub for more than 20 years. It hosts a busy schedule of high profile exhibitions, as well as guided tours, education programs, renowned art prizes and special events.

The Gallery reflects Mosman's impressive artistic heritage. The beauty of Mosman's beaches, headlands, bays and bush have inspired generations and some of the work created in the late 19th century 'Artists Camps' at Curlew Camp and Sirius Cove - especially those of Arthur Streeton - are now regarded as iconic Australian images.

Streeton is among the many renowned artists represented in the Gallery's collection, which also includes significant works by Conrad Martens, Will Ashton, Henry Fullwood, Elioth Gruner, George Halstead, James Ranalph Jackson, Matthew Charles Meere, Adelaide Elizabeth Perry, Sydney Long, Ethel Carrick Fox, Margaret Preston and John Olsen.

Subscribe to Mosman Art Gallery's e-newsletter for the latest news and upcoming exhibitions.

Opening hours

10.00am-4.00pm, 7 days and
Closed on public holidays
Free admission

1 Art Gallery Way, Mosman
Tel: (02) 9978 4178
Email: gallery@mosman.nsw.gov.au
Facebook: [facebook.com/mosmanartgallery](https://www.facebook.com/mosmanartgallery)

mosmanartgallery.org.au



Mosman Youth Centre

For young people of high school age who live or study in Mosman, this is a great space to relax, socialise and interact in a comfortable, judgement-free environment.

The centre offers free, fun and engaging activities including table tennis, a pool table, trivia competitions, volunteer programs, a fully equipped music room, free WiFi, game consoles, a kitchen and hang out spaces with comfortable lounges and bean bags.

Youth workers are on site and can assist with questions on a variety of issues, including resumes and referrals to other community services and facilities.

Opening hours

Monday to Friday: 3.00pm–6.00pm (during school term) and various times during school holidays.

30 The Crescent, Mosman (next to carpark)

Tel: (02) 9978 4013

Email: youth@mosman.nsw.gov.au

Facebook: [facebook.com/mosmanyouth](https://www.facebook.com/mosmanyouth)

mosmanyouth.com.au

See page 52 for more information.



Mosman Square Seniors Centre

Mosman Square Seniors Centre is a great place for older residents to socialise and connect. The centre runs a wide variety of activities to suit diverse interests including Tai Chi, art classes, chess, Zumba Gold, dancing, yoga, table tennis, discussion groups, Mahjong, gardening, walking groups, social outings and more.

Opening hours

Monday to Friday: 9.00am–5.00pm

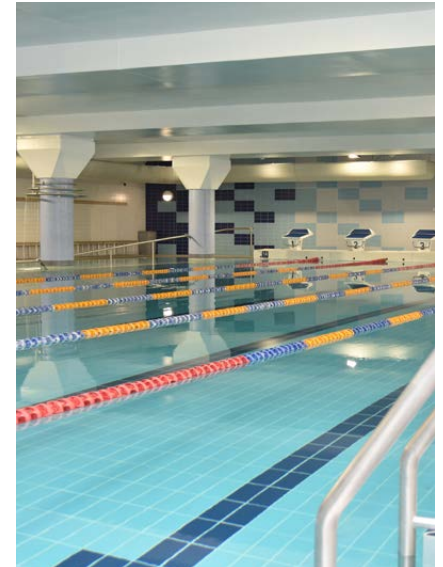
Civic Centre, Mosman Square

Tel: (02) 9978 4128 or (02) 9978 4119

Email: community.care@mosman.nsw.gov.au

mosman.nsw.gov.au/seniorscentre
care.mosman.nsw.gov.au

See page 54 for more information.



Mosman Swim Centre

Mosman Swim Centre features a six-lane 25m indoor heated pool with change rooms and showers, and offers learn to swim programs, training squads, fitness sessions, lap swimming and water play.

The centre includes disabled access and equipment, plus a water feature and leisure area for families.

Opening hours

Monday to Friday: 5.00am–8.00pm

Saturday: 7.00am–7.00pm

Sunday: 7.00am–6.00pm

Public Holidays: 8.00am–6.00pm

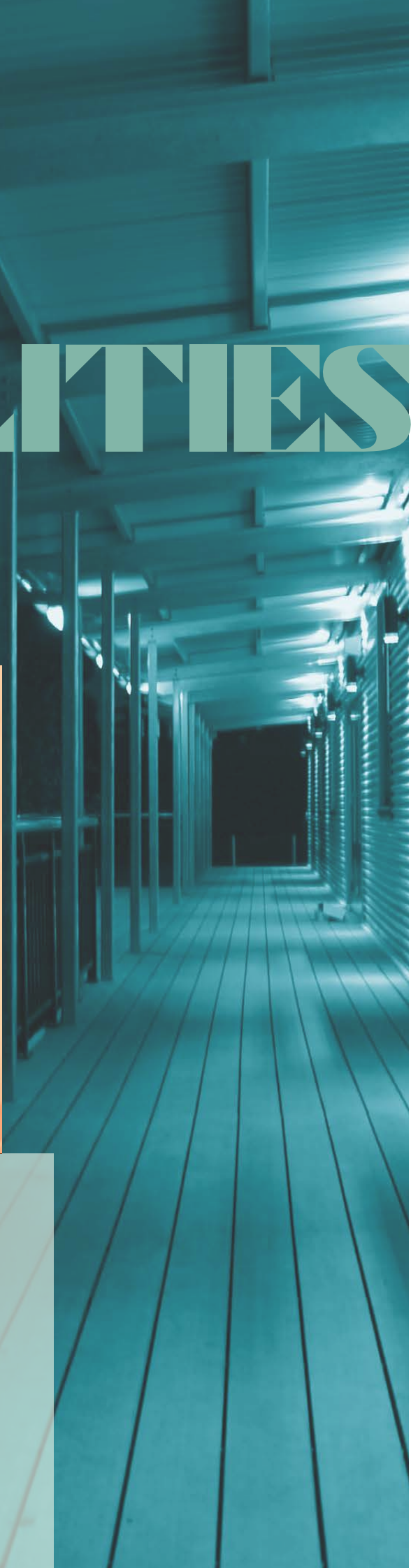
90 Vista Street, Mosman

Tel: (02) 9969 3888

mosmanswimcentre.com.au

FACILITIES

FACILITIES





Venues for Hire

A number of Mosman Council's community venues and some of Mosman's most beautiful outdoor locations are available for hire.

Mosman Drill Hall

Mosman's historic community hall located at Cross Street is available for private functions and other community activities. Restored and heritage-listed, the hall features a 25m x 15m timber floor. The adjacent all-weather netball courts are also available for hire. Tel: (02)99324502

Marie Bashir Mosman Sports Centre

The Marie Bashir Mosman Sports Centre, also located at Cross Street, includes a full size multi-function playing court suitable for indoor sports such as netball, basketball, indoor hockey and futsal. It features full disability access and includes amenities, seating and a mezzanine viewing area. Tel: (02)99324502

Mosman Art Gallery & Community Centre

The centre offers a range of well-appointed spaces over three levels for community use, including the unique Grand Hall, formerly a Methodist Church built in 1915. It is a perfect venue for a variety of functions including weddings, parties, product launches, performances and meetings. Tel: (02)99784178

Mosman Youth Centre

The centre has a small kitchen and seating for approximately 20 people, and is available for hire by community groups. Tel: (02)99784013

Mosman Square Seniors Centre

The Seniors Centre is also available for hire when not being used for other programming. Tel: (02)99784013

Outdoor Venues

Mosman's beautiful reserves, beaches and parks can be used on a casual basis at any time. Bookings are essential for organised events of more than 50 people, and all corporate functions and legal ceremonies (such as weddings or christenings). Council-managed locations such as The Rotunda and Rocky Point Island at Balmoral Beach can also be booked for weddings up to 12 months in advance. Tel: (02) 99324502

For more information visit mosman.nsw.gov.au/venues





RECREATION

Mosman has many beautiful bays and beaches punctuated by rugged headlands and sandstone cliffs. From swimming, sailing and scuba diving to sun bathing and picnicking, they attract thousands of residents and visitors each week in search of recreation and leisure.

Beaches

Sydney's best selection of family-friendly and calm-water harbour beaches is headlined by beautiful Balmoral. Beach areas maintained by Mosman Council are:

- Balmoral Beach
- Edwards Beach
- Chinamans Beach
- Little Sirius Cove
- Clifton Gardens
- Spit East

There are also two 'clothing optional' bathing areas on the shores of Middle Head, where nudity is permitted. These are administered by the State Government:

- Obelisk Beach
- Cobblers Beach

Parks & Reserves

Mosman is blessed with many parks, reserves, foreshore areas and open spaces. Many offer a range of facilities such as weather shelters, BBQs and play equipment. A number of parks include areas where dogs can be exercised on or off leash at certain times. For more information visit mosman.nsw.gov.au/parks

Bushland

It's easy to escape the bustle of city life in Mosman, which features remarkable biodiversity for a suburb that is so close to the city. Council's 2021/22 Flora and Fauna Survey identified 499 species of native flora and 64 species of native fauna in the area.

Fortunately much of the native bushland in Mosman is part of Sydney Harbour National Park and so protected from development. These areas include Middle Head, Georges Heights and Bradleys Head. A diverse range of other bushland sites are also managed and protected by Council and the Sydney Harbour Federation Trust.

There are plenty of opportunities for interested residents to be involved in the local area's bushland care. For more information see 'Volunteering' on page 58.

RECREATION



Sports Grounds

Sport is part of the fabric of Mosman. The suburb is home to a number of high quality and well maintained sports grounds, many of which are available for casual and seasonal use. Please be aware demand can be high. Bookings for organised activities are essential and should be made through Council well in advance. Tel: (02) 99324502

Sports fields include:

- Allan Border Oval
- Balmoral Oval
- Georges Heights Oval
- Middle Head Oval
- Rawson Oval

Playgrounds

Families and children love Mosman's wide selection of 14 public playgrounds. They range from simple swings and climbing structures to the latest in play design and equipment.

For those wishing to keep their youngsters contained and within reach, there are fenced playgrounds at Balmoral, Clifton Gardens Reserve, Curraghbeena Park, Memorial Park, Memory Park, Reginald Street Park, Reid Park, Sirius Cove Reserve and Spit West Reserve.

There are plenty of outdoor recreational areas for grown-up residents too, some featuring public art, educational features and exercise equipment.

ON



REC



CREATION



Walking

Those who enjoy walks are spoilt for choice with beautiful foreshore trails and bushwalking tracks.

The MyMosman app details a range of local walks that can be done individually or linked to complete a loop of the suburb. It also highlights interesting facts about local wildlife, heritage, Aboriginal sites, bushland and coastal features. Popular walks include:

- Bradleys Head to Chowder Bay, a gentle 4km bushtrack from Taronga Zoo to the beach and cafes at Chowder Bay, with spectacular Sydney Harbour views
- Taronga Zoo Wharf to Mosman Bay, a coastal route which takes in expansive harbour views and culturally significant areas. It follows a bush track to Little Sirius Cove, passing the route taken by early artists such as Arthur Streeton who established the Curlew Artists' Camp in the late nineteenth century
- Routes through historic areas such as the Middle Head walk which takes in military fortifications and water views.

Mosman also forms part of the Bondi to Manly Walk, an epic coastal and harbour-side walking track between Bondi Beach and Manly Beach. For its entire length the walk is on public land, with the vast majority of its 80km on well-made and well-maintained bush walking tracks.

The route is signposted and a special app to guide walkers is available online, for more information visit bonditomanly.com

Cycling

Cyclists in Mosman can enjoy spectacular views and journey through expansive foreshore parklands and bushland reserves, with many excellent cafes en route.

There are several local cycling paths plus a regional route linking Mosman to North Sydney and Manly.

Most routes in the area are graded medium in difficulty with some steep hills, and they avoid the high traffic along Military and Spit Roads.

For more information visit mosman.nsw.gov.au/recreation

RECREATION

Sailing & Boating

With sheltered bays adjacent to one of the world's most scenic city harbours, Mosman's waters are popular for sailing and boating. There is a range of facilities, amenities and infrastructure available for recreational sailors including marinas, clubs, boat ramps and public moorings.

Marinas

There are several marinas in the area and a nautical hub at The Spit, which is home to Middle Harbour Yacht Club, Middle Harbour Skiff Club and a number of popular waterfront restaurants. Local marinas include:

- d'Albora Marinas - The Spit
- Ferguson's Boatshed Marina - The Spit
- Smith's Spit Boatshed - The Spit
- Middle Harbour Yacht Club - The Spit
- Mosman Marina - Mosman Bay
- Balmoral Boatshed - Balmoral Beach

Boat Ramps

Public boat ramps are located at:

- The Spit Road Boat Ramp - The Spit

Wharves

Mosman has three commuter wharves serviced by Sydney Ferries:

- Mosman Bay (Avenue Road)
- South Mosman (Musgrave Street)
- Taronga Zoo (Athol Wharf Road)

For more information visit rms.nsw.gov.au/maritime/using-waterways

Moorings

Moorings are available at various locations throughout Mosman however demand is usually high. To apply, lodge an application for a mooring licence at any RMS registry or NSW Service Centre. Approved vessels are eligible for private, commercial/club or emergency mooring and penalties apply for non-compliance.

For more information visit rms.nsw.gov.au/maritime/moorings

Boat trailer parking

Residents can park their boat trailers on local streets under tightly-enforced restrictions. Unattended boat trailers cannot remain parked in the same place for longer than 28 consecutive days. If that occurs Council may impound the trailer after giving 15 days notice.

For more information visit olg.nsw.gov.au/boattrailers





ON





EVENTS

Mosman has a vibrant year-round schedule of community events. There's something for everyone including monthly markets, art exhibitions, outdoor concerts and annual favourites such as Mosman's much-loved Pet's Day Out. These are just a few of the annual highlights.

Stay up to date with what's on via events.mosman.nsw.gov.au

Festival of Mosman

Spring in Mosman is festival time. The biggest is the biennial 'Festival of Mosman', held in odd-numbered years. This celebrates the best of Mosman and the area's harbourside lifestyle through a busy and diverse program of events for all ages, including open air concerts, art exhibitions, outdoor movie nights, environmentally themed activities, outdoor dining, and much more.

In alternate years to the Festival of Mosman, Council hosts 'Out and About' a series of free community events that includes outdoor concerts and movie screenings.

Pet's Day Out

Each year Mosman gives residents a fun opportunity to celebrate with their pets and other animal lovers at Pet's Day Out. The day features popular games and competitions such as animal fancy dress, and a 'There's No Such Thing as The Dog Poo Fairy' race, as well as interactive activities like obedience master classes and dog yoga.

Art Prizes & Exhibitions

Mosman Art Gallery hosts impressive exhibitions and a number of prestigious annual awards for both emerging and established artists.

Established in 1947, the Mosman Art Prize is the Gallery's signature event and one of Australia's longest-running and most prestigious local government art awards. The winning works have helped to build an important collection of modern and contemporary art that reflects developments in Australian art practice over the past 75 years. Past winners include Margaret Olley, Guy Warren, Grace Cossington Smith, Weaver Hawkins, Nancy Borlase, Lloyd Rees, Anthony Galbraith, Elisabeth Cummings, Tim Johnson and Guan Wei.

The Mosman Youth Art Prize, initiated in 1988 by renowned local artist Ken Done AM, is open to young people aged 12-21 years. It accepts entries in any media and is one of the richest youth art prizes in Australia. The Prize gives aspiring young artists the opportunity to exhibit in a public gallery, as well as the chance to win cash prizes, scholarships and art materials. The resulting annual exhibition is an exciting and inspiring showcase of the region's emerging and diverse artistic talent.



Markets

The Mosman Market is one of Sydney's most popular community markets. It is held from 8am to 3pm on the first Saturday of every month except January, at Mosman Square and Village Green.

Featuring approximately 150 stalls, the markets offer a diverse range of products from local sellers, artisans and craftspeople. Unique and handcrafted goods include jewellery, stationery, photography and art, ceramics, clothing, baby wares, Fair Trade products, woodwork, organic skin care, glassware, toys, pet products and gifts.

Visitors can sample cakes, biscuits, jams and preserves, and enjoy delicious take away foods, live entertainment and a vibrant atmosphere.

Council also holds several night markets throughout the year: the Christmas Night Market early in December, EasterFeast in March/April, WinterFeast in July and OctoberFeast.

Rapt

In December Mosman gets into the festive spirit with Council's popular Christmas decorating competition for businesses and retailers, Rapt. Rapt has become a tradition, and businesses with street or public frontage compete for awards including best display, best lighting and most sustainable display.

Hunter Valley Uncorked

The Hunter Valley's leading winemakers and gourmet providores come together to showcase their wares at Balmoral one Sunday every October. It's a fantastic opportunity for residents and visitors to immerse themselves in the Hunter Valley way of life and unearth the tastes, sights and stories of the region.

Mudgee Wine & Food Fair

The winemakers of the Mudgee Region bring their award-winning wines to Balmoral every August with the Mudgee Wine & Food Fair. Regional produce is also a feature with delicious olive oils, pickles, cheese, wine jellies and honey available to sample and buy.

Mini-Mos Community Fun Run & Fair

The Mini-Mos Community Fun Run & Fair is a favourite community event. Held in June, it raises funds for Mosman Public School and the school's nominated charities. It's a great day out, with 2km, 5km and 10km road races around the streets of Mosman, and the Mini-Mos Fair held on the school grounds.

Balmoral Burn

On the last Sunday of May each year Awaba St and the northern end of Balmoral hosts the Humpty Dumpty Foundation's major fundraiser, the Balmoral Burn. As the organisers say, it's only 420m uphill, but it is a steep hill! The Balmoral Burn is now a Sydney institution and each year thousands of entrants test their endurance and race up the Awaba St hill. All funds raised help the Humpty Dumpty Foundation provide critical medical equipment for life-saving infant and child care to hospitals around Australia.

Children's Day

Mosman Council celebrates Children's Day each Spring with a focus on children up to 5 years of age, it's a free two-hour event where youngsters can have fun and enjoy themselves. This fun community event is a favourite with young families.

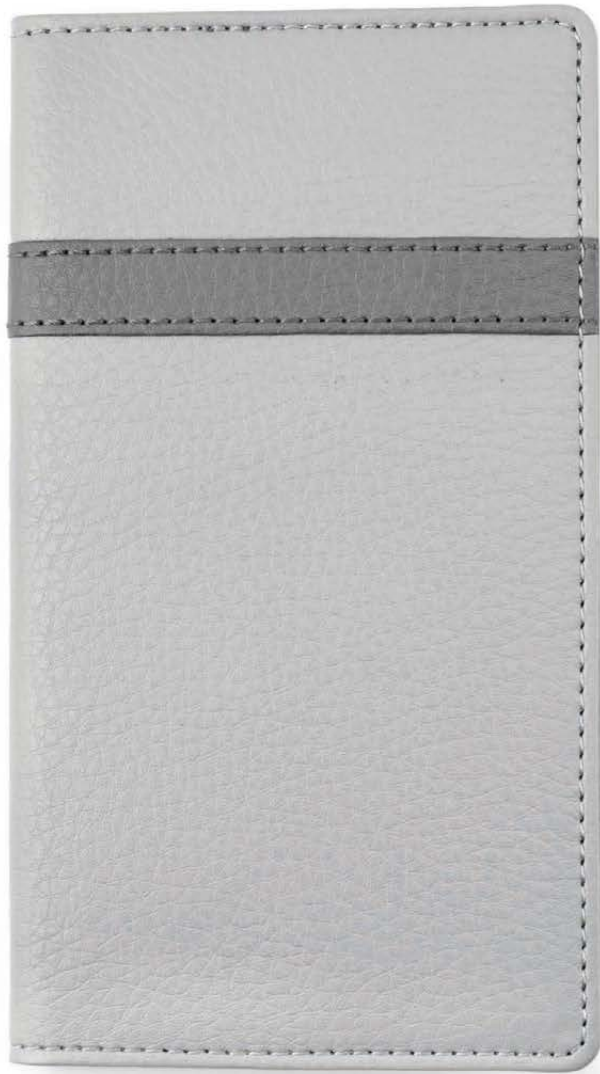
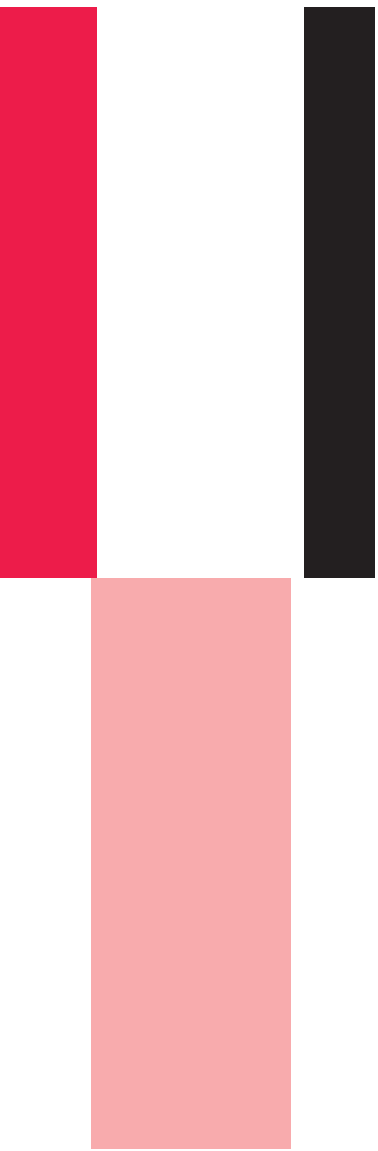


3



NEED TO KNOW

MO



OWNING



MOVING IN

While it can be exciting to move, it takes a lot more than empty boxes to feel settled in a new place. Sometimes the little things can make the most difference; knowing when to put the bins out, getting the renovations kick-started or making sure that your beloved pets have been registered at their new home.

The following pages bring this information together for you in one place.

MOVING





Checklist

A checklist is a useful tool when organising a house move. It reduces stress and the chances of forgetting things. This checklist highlights some key areas to consider.

It is mandatory to notify a change of address with government offices including the Electoral Commission, Medicare, Centrelink (if you receive social security benefits) and ServiceNSW for your driver's licence. You can smooth the process by updating your address online on the MyGov (my.gov.au) and ServiceNSW (service.nsw.gov.au) websites.

You can visit the Australia Post website to have your mail redirected and arrange for change of address notifications to be sent to nominated organisations. It's a good idea to keep an eye on your mail leading up to your move, to take note of who sends you mail regularly and collect change of address forms that come with subscriptions.

If you have children include school, friends and extra-curricular clubs and activities, and pets should have their registration address details updated through the Office of Local Government at petregistry.nsw.gov.au in case they go missing and are picked up by Council or others.

Government agencies

- Australia Post (apply to have your mail redirected) auspost.com.au
- Australian Electoral Commission aec.gov.au
- Australian Tax Office (tax returns, small business licences) ato.gov.au
- Government services including Medicare and Centrelink (pensions, seniors card, veterans affairs, NDIS etc.) humanservices.gov.au or my.gov.au
- Service NSW (driving licences, car and boat registrations) service.nsw.gov.au
- Local library membership mosman.nsw.gov.au/library
- Council rates and registrations mosman.nsw.gov.au

Utilities

- Electricity
- Water
- Gas
- Fixed phone line services
- NBN and fixed broadband Internet
- Cable and satellite TV

Health & medical

- General practitioner
- Dentist/Orthodontist
- Medical specialist
- Personal trainer
- Veterinarian
- Health insurance provider

Other

- School
- Employer/work
- Financial (financial advisor, accountant)
- Banks, credit cards and credit unions
- Clubs
- Family and friends
- Gym and fitness memberships
- Insurance companies (ie vehicle, property, home and contents)
- Loyalty cards/programs
- Subscriptions
- Legal representation
- Superannuation fund
- E-tags, tolls, mechanic
- NSW Pet Registry petregistry.nsw.gov.au

Hopefully this checklist helps with sorting out some of the basics.

The following pages have more information to help make your move in to Mosman a smooth and enjoyable one.

WASTE

Keeping Mosman clean and tidy is the responsibility of every resident. The following information details Mosman Council's waste collection, minimisation and recycling services.

General Waste

Council collects mobile red-lid bins for general and non-recyclable waste once a week from each residence on the designated collection day for that area (see collection calendar).

Red-lid bins are available in 80 or 120 litres capacity for houses, or 240 litres for bins shared between residents in apartment blocks. The system is user pays, meaning that the smaller your bin the lower the charge.

To help Council provide an efficient service, bins should be placed outside at the kerb, clear of impediments, with lids closed on the night prior to collection day. Once emptied, bins should be retrieved as soon as possible and stored back on your property.

Recycling

There are collections for two types of recycling bins, blue-lid bins for paper and cardboard and yellow-lid bins for glass and containers. They are collected on the same day as general waste on alternating weeks, for example the blue-lid bin is collected one week, and the yellow-lid bin is collected the next week. For apartment blocks, both types of recycling bins are collected each week (see the next page for more information on recycling).

Green Waste

Council offers a monthly or prepaid collection service for green waste and provides 240 litre green-lidded recycling bins for the collection. A one-off administration cost of \$25 applies. Visit Council's website to order the service.

Excess green waste material can also be collected by booking a prepaid service.

Community Recycling Centre

The Northern Sydney Community Recycling Centre, located in Waltham Street Artarmon, provides a free collection service for residents of Mosman for items that cannot otherwise be disposed of through regular waste disposal practices. The majority of these items are recycled and include paints, gas bottles, ink cartridges, x-rays, car oil and other types of oil. Contact the Centre for opening hours on 99368100.

E-waste

E-waste must be disposed of separately. It can contain useful finite resources such as gold, copper and silver, as well as substances that can be environmentally toxic if they end up in landfill, such as lead and mercury. Recycling e-waste means that 90% of the materials can be recovered and recycled into new products.

Council hosts two free e-waste drop-offs each year. The collection takes computers, laptops, monitors, TVs, DVD/CD/VHS players, printers, small electrical appliances, mobile phones, microwaves, game consoles and computer peripherals.

For more information visit mosman.nsw.gov.au/e-waste



WASTE

Biennial Clean Ups

There are two free scheduled household clean ups for residents each year, in February and August. This provides collection for larger items such as whitegoods, bicycle frames and other metals, furniture, small appliances, carpets and linoleum (limited to one piece maximum up to 1.5m in length). Please place metals and whitegoods in a separate pile to non-metal material. Metal and non-metal materials are collected from the kerbside separately to maximise the opportunity for recycling and reprocessing. Items should be placed out for pick-up on the night before collection.

Items that don't qualify include e-waste, vegetation, excavated materials, building materials and waste, car parts and tyres, food waste, liquid waste (paints, oils and chemicals), bricks, concrete and guttering, ceramics and tiles and hazardous waste such as asbestos.

If you have excess material and can't wait for the free scheduled biannual collection, you can arrange for an additional collection by booking a prepaid service.

Collection Calendar

A calendar including household waste and recycling collection dates is delivered to residents before the start of each year, and can also be accessed online at mosman.nsw.gov.au/collection-dates or via the MyMosman app.

Prepaid waste collection services can be booked through Council's Waste Line on (02) 9978 4076.

Tip (Self Disposal)

If you can't wait for regular collections or have too much rubbish, you can also use the Kimbriki Resource Recovery Centre, located off Mona Vale Road just past Terrey Hills. This service is free for Mosman residents dropping vegetation or e-waste, though charges may apply for other materials.

Illegal Dumping

Dumping waste on the kerbside or in parks and bushland is illegal. Offenders can face prosecution and fines of up to \$4,000. This applies to general household rubbish, larger household items such as mattresses, furniture and whitegoods, construction and demolition waste, organic material, chemicals and other hazardous waste, abandoned vehicles, car parts and shopping trolleys.

Council urges residents to consider their neighbours, community and the environment, and dispose of waste properly.

For more information visit mosman.nsw.gov.au/wasteandrecycling or the Waste & Recycling section in the MyMosman app.



RECYCLING GUIDE

Mosman Council encourages residents to be aware of which materials are and are not recyclable. On average 20% of rubbish placed in Mosman landfill bins is recyclable.

To make recycling easier, Council has a range of free stickers and signage to explain clearly what is eligible for each type of recycling bin. These use easy to follow colour coded categories, and photos of relevant items. If you would like these materials for your bins or waste collection rooms, please contact Mosman Council on 9978 4000.

The Red Bin

Landfill General waste

Accepted:

- Food scraps
- Nappies
- Plastic bags
- Food wrappers
- Take away coffee cups
- Polystyrene



Please consider avoiding waste in the first instance and reuse or rehome any items in good condition.

Loose items placed outside of the bin will not be collected.

Not Accepted



- eWaste and batteries
- Paint, solvents and chemicals
- Medicines (take to pharmacy)
- Car parts and tyres
- Building materials and rocks
- Hot ash or liquids
- Green waste and soil



RECYCLING GUIDE

The Yellow Bin

Recycling Glass and mixed container

Accepted:

- Glass bottles and jars
- Plastic bottles
- Rigid plastic containers
- Milk and juice cartons
- Steel and aluminium cans
- Empty aerosol cans
- Shampoo bottles
- take away coffee cup lids



The Blue Bin

Recycling Paper and cardboard

Accepted:

- Cardboard boxes
- Clean paper and cardboard
- Paper envelopes (all kinds)
- Magazines and newsprint
- Phone books
- Egg cartons



The Green Bin

Recycling Organic waste

Accepted:

- Grass clippings
- Twigs and leaves
- Tree and hedge prunings



Empty containers for recycling.

Loose items placed outside of the bin will not be collected.



Cardboard and paper must be clean.

Items must be crushed, flattened and placed loosely within the bin. Loose items placed outside of the bin will not be collected.



Place organic waste in the green lidded bin or rigid container.

Council offers a special Christmas tree collection early each calendar year.

Not Accepted



- Plastic shopping bags
- Non rigid (scrunchable) plastics
- Broken window glass
- Light globes
- Polystyrene and meat trays

Not Accepted



- Plastic shopping bags
- Soiled paper and cardboard
- Used items including paper towels, serviettes, pizza and fast food boxes

Not Accepted



- Plastic shopping bags
- Pruned branches over 1m in length or 100mm in diameter
- Food scraps
- Soil and rocks
- Tree stumps
- Hessian bags





PETS

PETS

Pets give joy and companionship to their owners, and Mosman is a pet-loving community. Of course, owning a pet also entails responsibility and Mosman Council encourages owners to understand all that is involved in caring for and nurturing an animal.

Responsible Ownership

Cat and dog owners have legal responsibilities under the NSW Companion Animals Act 1998, which is designed to help people and companion animals live together.

Things pet owners need to do include:

- Register pets with the NSW Pet Registry, visit mosman.nsw.gov.au/pets for more information.
- Attach a tag and collar with an address and phone number.
- Keep dogs on a leash outside private property, and the leash must be held by someone who can control the dog.
- Pick up after the animal when it defecates on public land, and deposit the excrement in the toilet, a compost or a dog bin. Owners must not allow an animal to defecate in the gutter or on the road.
- Ensure the pet does not enter school grounds without written permission from the principal, shopping centres, or come within 10 metres of children's playground equipment.

Dog Walking

Mosman is great for dog owners, and there are many parks and reserves where they can be exercised either on or off the leash at certain times. For details visit mosman.nsw.gov.au/dogwalking

When off the leash, dogs must at all times be under the supervision of a competent person who ensures the dog does not annoy or endanger others.

Dogs are not allowed in other parks and reserves, or on ovals and beaches, and must be on the leash when outside private property.

Owners are encouraged when out with their dogs to take bags to pick up after them.

Free bags are available from dispensers in a number of parks and reserves.

Pet's Day Out

Each year Mosman gives residents the opportunity to celebrate their pets and get together with other animal lovers at Pet's Day Out. The free event features competitions and interactive animal shows such as obedience master classes, animal acupuncture and dog yoga. Bring your pet along to join in the fun.

For more information visit
mosman.nsw.gov.au/pets

GETTING AROUND



GETTING AROUND

It is easy to get around in Mosman, and Mosman Council encourages residents to choose sustainable transport options over cars whenever possible to ease traffic congestion and reduce pollution. A short distance from Sydney and connecting the city to suburbs in the northern beaches, the area is also generously serviced by public transport.

Public Carparks

Mosman has plenty of on and off-street car parking, and Council has installed integrated smart parking technology to help residents more easily locate vacant parking spaces.

There are in-ground sensors for street parking along Military Road and surrounding streets, and signage and overhead guidance indicators in off-street carparks at Bridgepoint, Vista Street, Marque, Mosman Square, Raglan Street West and Raglan Street East.

There is pay and display parking along The Esplanade at Balmoral Beach and for carparks at Clifton Gardens, Rosherville, and The Spit. Visitors who park in these areas must purchase a ticket from the machines and display it clearly on the dashboard of their vehicle at regulated times.

Parking Permits

Council provides residents with permits for car parking in selected residential streets and foreshore parking areas.

Residential parking scheme

The residential parking scheme enables eligible residents living in some of Mosman's busiest streets to park their vehicles near their property by exempting them from parking restrictions.

Foreshore parking permits

Mosman residents can apply for a foreshore parking permit that allows free parking at the following foreshore reserve car parks:

- Clifton Gardens
- Balmoral South (adjacent to oval)
- Rosherville
- The Spit - East, West and Ellery Park

The permit also allows free parking for up to three hours in ticketed areas along The Esplanade at Balmoral Beach, The Spit, McLean Crescent adjacent to Rosherville Reserve, and Bradleys Head Road opposite Taronga Zoo (subject to displaying a free three hour ticket on the vehicle dashboard).

Council's parking permits are vPermits, or digital permits, and do not require a sticker to be displayed on the car. Residents manage their own parking permits online through vpermit.com.au/mosman. For more information visit mosman.nsw.gov.au/parkingpermits



Community Transport

Mosman Community Care provides flexible door-to-door accessible transport options for frail older people, younger people with a disability and their carers who live in Mosman. Door-to-door transport is available for eligible patrons to travel to and from the Seniors Centre for social activities and meals, as well as medical appointments, visiting, shopping, library and social activities. Costs to use the service vary but are kept to a minimum.

Council's Community Buses have limited availability for hire to community groups.

To book or for more information call 99784120 or email community.transport@mosman.nsw.gov.au.

Public Transport

Public bus services provide frequent connections from Mosman to Sydney's CBD (Wynyard and Central Station), North Sydney, Chatswood and the Northern Beaches. The yellow double-decker B-Line (B1) provides an express access to the Northern Beaches and the city.

Ferry services operate from three public wharves to Circular Quay on the other side of Sydney Harbour: Mosman Bay Wharf, South Mosman Wharf and Taronga Zoo Wharf. From the ferry hub at Circular Quay, ferry services connect to other foreshore locations including Manly, Parramatta, Darling Harbour, Watsons Bay and Balmain.

There are different ways to pay for your travel on public transport in Sydney, the Blue Mountains, Central Coast, the Hunter and the Illawarra. You can use an Opal card, use your contactless credit, debit or mobile device or buy an Opal single ticket to pay for travel. The tap-on, tap-off service covers bus, train, light rail and ferry networks. Opal Cards are sold at newsagents, convenience stores and transport hubs, and can be topped up online. Visit opal.com.au

Timetables and real-time service tracking are available through Transport NSW's TripView app, available from the App Store and Google Play.

Car Share

Car sharing is available in Mosman through GoGet and Popcar, with parking pods in several locations including Brady Street, Stanton Road, Shadforth Street and in the Council carparks at Raglan Street East and Mosman Square. These vehicles can be hired for as little as one hour. For more information on locations, bookings and availability visit goget.com.au or popcar.com.au

Electric Vehicle Charging

For those who own an electric vehicle, a 50kw DC fast charger is located at Mosman Square Car Park. Other charging point locations nearby include St Leonards, Crows Nest, Cammeray, Balgowlah and the CBD. More information on charging providers and sites is available from plugshare.com, with additional fast charging stations continuing to be rolled out across Sydney.

For more information visit mosman.nsw.gov.au/transport





RATES

RATES

Rates fund Mosman Council's services including road maintenance, parks and sports grounds, community facilities, and resident services.

To ensure fairness, these are calculated on land size, value and usage. Land values are supplied to Council by the Valuer-General and revised on average every three years.

Rebates are available for eligible pensioners and Council offers a voluntary rebate to Australian Service Veterans who do not qualify for government assistance. To check eligibility or for other rate related enquiries call (02)9978 4140.

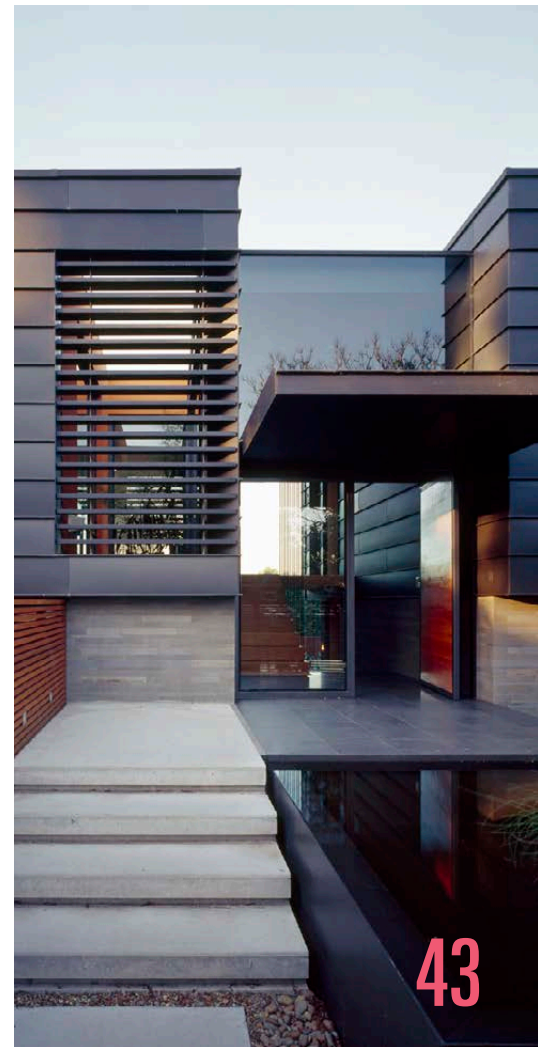
Making Payments

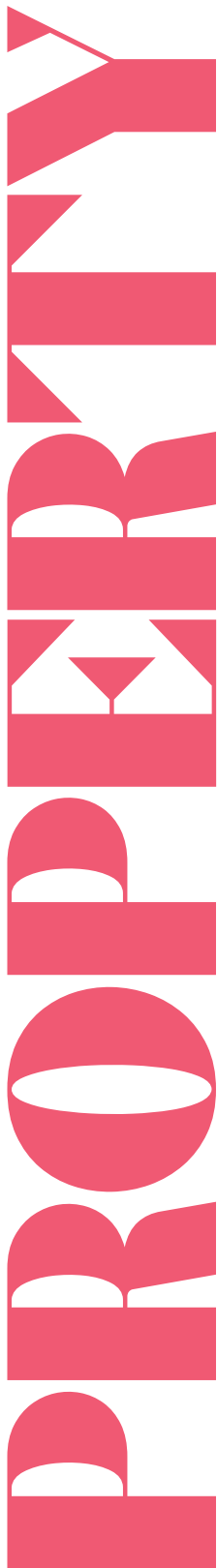
Rates can be paid in full annually, or in quarterly instalments which are due on the same dates each year - 31 August, 30 November, 28 February and 31 May.

There are various options for payment:

- Online - using the Commonwealth Bank's secure BPOINT or your banking institution's B-PAY facility.
- In person - at any branch or agency of Australia Post using cash, cheque or EFTPOS.
- At Mosman Civic Centre, using EFTPOS or a credit card (American Express, Mastercard or Visa).
- Over the telephone - by calling 1300 276 468 and paying with a credit card (American Express, Mastercard or Visa).
- Direct Debit - by setting up a direct debit with Council from your nominated account.

For more information visit mosman.nsw.gov.au/rates





PROPERTY

Development

In Mosman, if you intend to build, develop or use land, your first step should be to contact Mosman Council for advice on:

- The development assessment process
- The rules for developing the particular site under Council's local plan
- Any issues that might affect development and use of the site.

Council's Planning Advisor (Duty Planner) is available from 8.30am to 10.30am, Monday to Friday, and can be contacted on (02) 9978 4172 or by visiting Council during these hours.

To inform residents and any other interested persons about the steps in the development assessment process, Council also has a Development Application (DA) guide and several useful tools on its website. For more information visit mosman.nsw.gov.au/development/applications

Mosman Design Awards

The prestigious Mosman Design Awards recognise outstanding contributions to the built environment in the Mosman area.

Nominations are judged by a panel of industry leading architects, considering factors such as sustainability, use of materials, siting, innovation and functionality. Architects, builders and home owners are encouraged to nominate their project or property.

For more information visit mosmandesignawards.com.au

Heritage Advice

Mosman has many beautiful heritage homes and Council runs a Heritage Advisory Service offering free advice from a qualified Heritage Architect on what can and can't be done with heritage listed properties.

Heritage-related Development Applications (DAs) are referred to Council's Heritage Advisor. To avoid disappointment and wasting time, owners or developers are advised to begin a dialogue on design with Council in the early planning stages.

Prior to making an appointment, you can discuss heritage matters and queries with Council's Duty Planner, available 8.30am to 10.30am, Monday to Friday.

Pools & Spas

Swimming and spa pools must be registered in a statewide pool register. Pools and spas can be logged and further information found at the NSW Swimming Pool Register online at swimmingpoolregister.nsw.gov.au

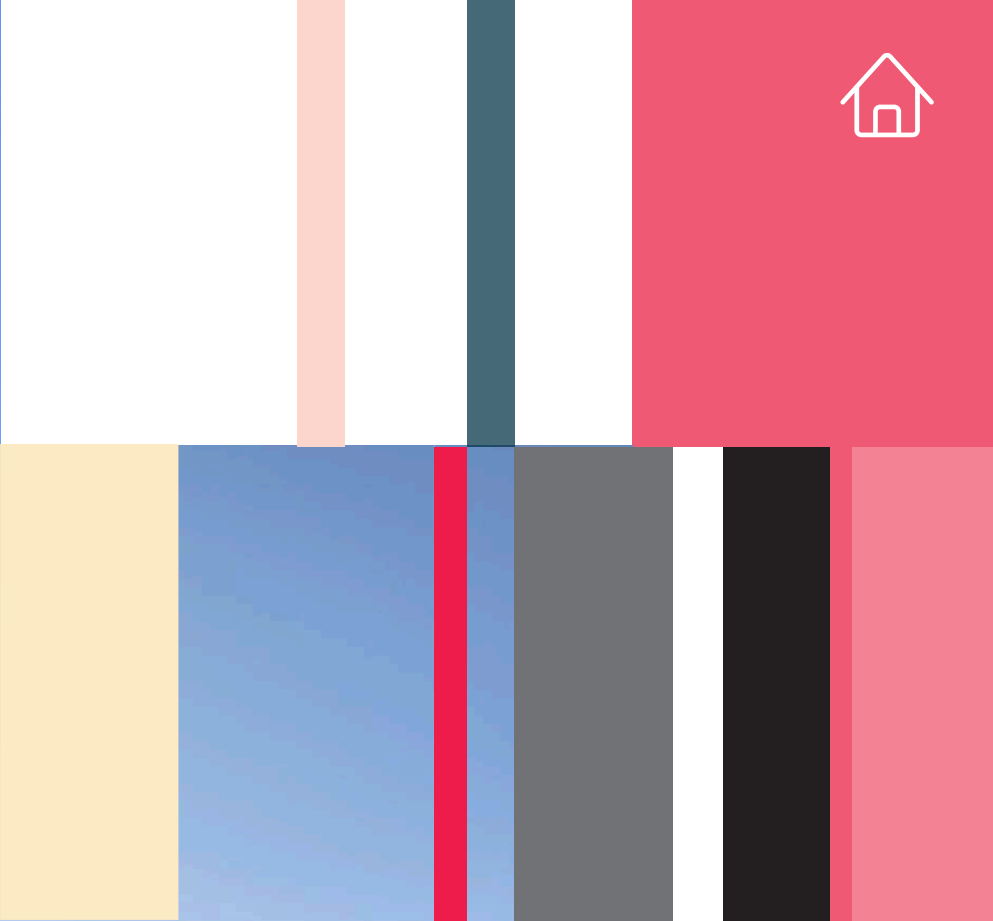
Owners are responsible for the safety of their pool and surrounding area, including adequate safety fencing and appropriate resuscitation instruction signage.

Anyone who rents or sells a property with a pool must have a current compliance or occupation certificate. To apply for a Council inspection of your pool barrier go to mosman.nsw.gov.au/pools

Trees

Property owners are responsible for trees and vegetation growing on their property.

All pruning work on private and public land requires Council consent unless work is undertaken on an exempt species. For information download the Trees Mosman app or visit mosman.nsw.gov.au/trees

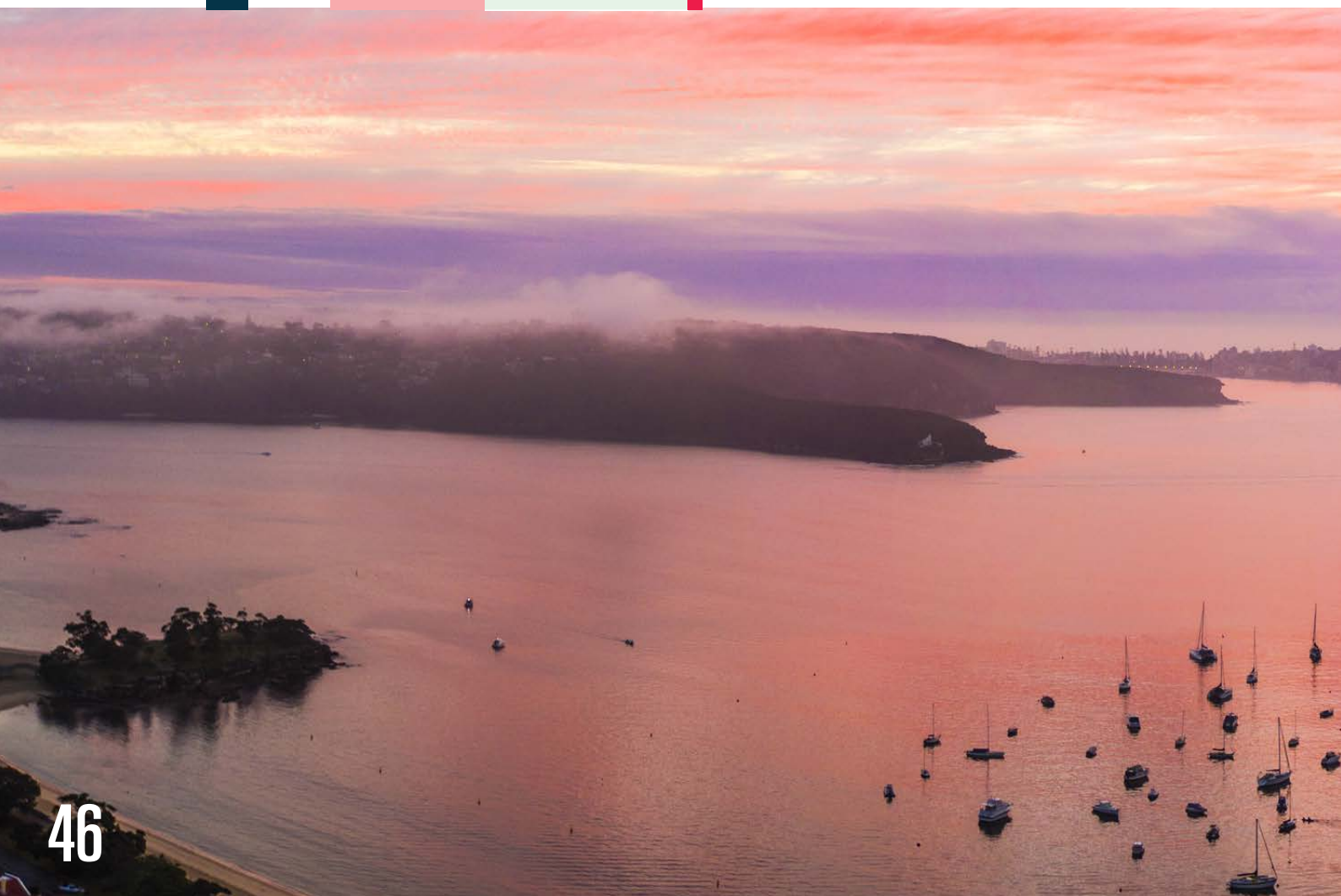




ELECTORAL INFO

New residents to Mosman, or people moving within the suburb, must update their address on the electoral roll or risk having it removed and being unable to vote.

Enrolment requires proof of identity such as current driver's licence, Australian passport number or the endorsement of someone already enrolled. Please note that the AEC cannot accept any other forms of identification, such as 18+ or Proof of Age cards. For more information visit aec.gov.au





ELECTORAL INFO

Local

Mosman Council has a governing body that includes a popularly-elected Mayor plus six Councillors elected for a four-year term of office (see page 68).

State

North Shore

Mosman is part of the NSW electorate of North Shore.

Local Government Areas wholly or partially within this district include: Lane Cove, Mosman and North Sydney.

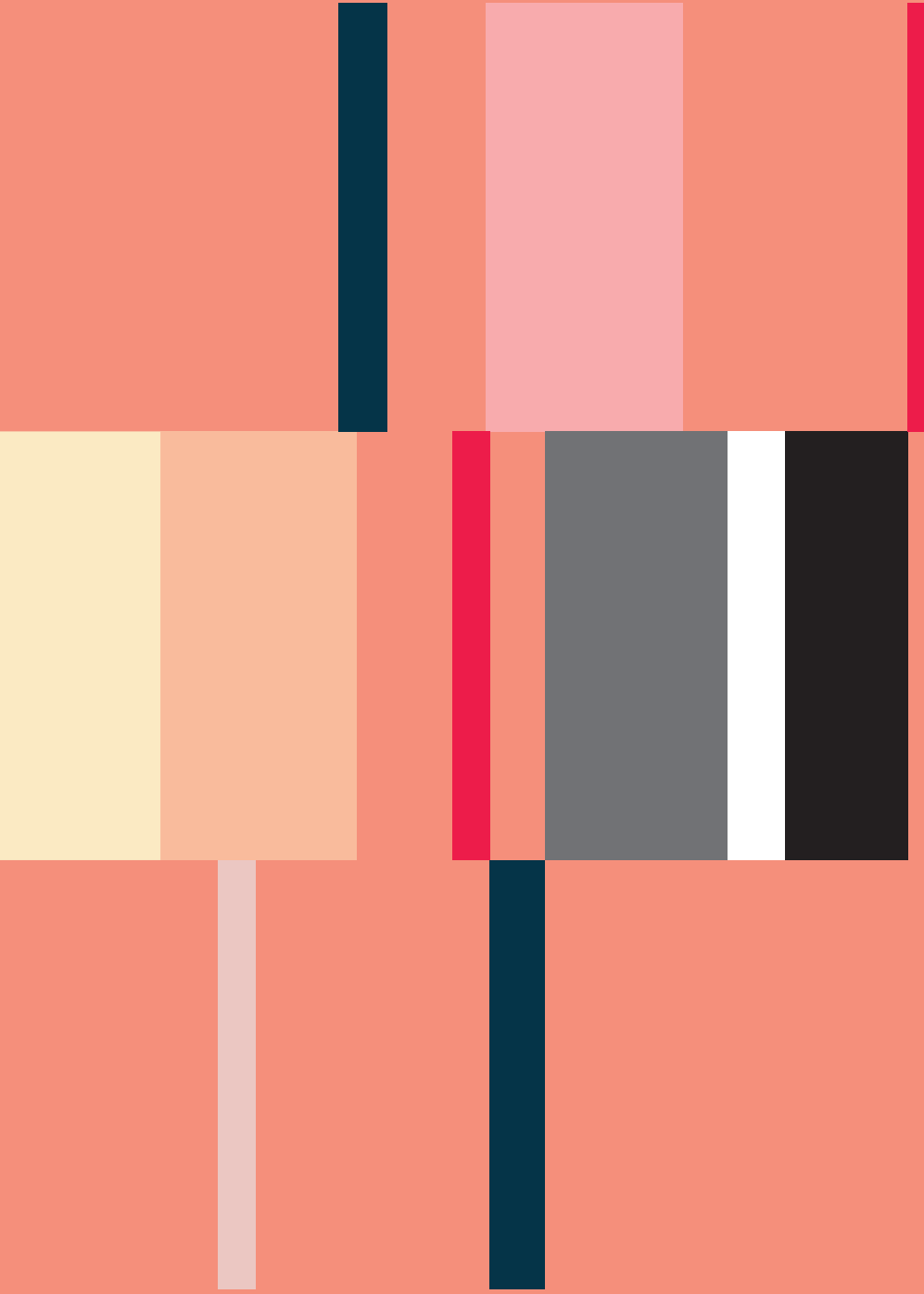
Localities include: Balmoral, Beauty Point, Clifton Gardens, Cremorne, Cremorne Point, Crows Nest, Kirribilli, Kurraba Point, Lavender Bay, McMahons Point, Milsons Point, Mosman, Mosman Bay, Neutral Bay, North Sydney, Spit Junction, St Leonards, Waverton and Wollstonecraft. Postcodes include: 2060, 2061, 2062, 2065, 2088, 2089, 2090.

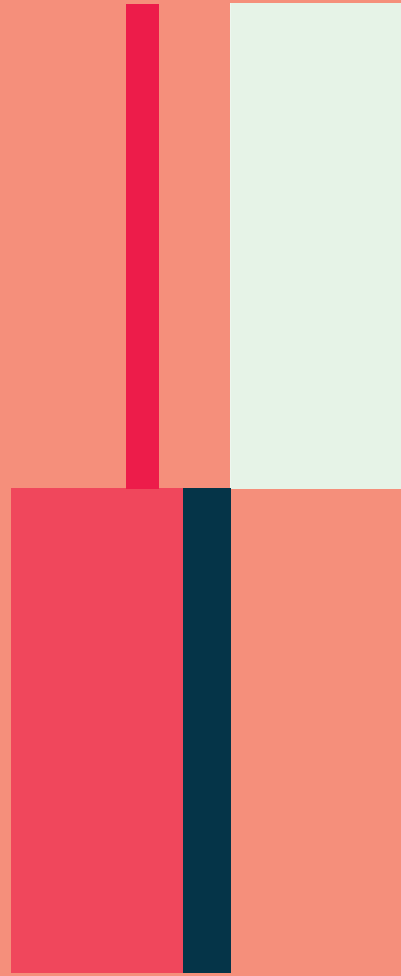
Federal

Warringah

Mosman is in the Federal seat of Warringah, which covers an area from Neutral Bay, Mosman and Manly in the south, to Curl Curl and Frenchs Forest (part) in the north. It is bound by Middle Harbour, Military Road, Falcon Street, Bent Street, Forsyth Park, Montpelier Street, Eaton Street, Rawson Street, Kurraba Road, Anderson Park and Neutral Bay in the west. Main suburbs include Allambie Heights, Balgowlah, Brookvale, Cremorne Point, Curl Curl, Fairlight, Forestville (part), Frenchs Forest (part), Killarney Heights, Manly, Manly Vale, Mosman, Neutral Bay, Queenscliff and Seaforth.







**HERE
FOR
YOU**

FAMILIES

Mosman is popular with families. The area's parks, beaches and schools provide a healthy, active and welcoming environment in which to raise children. There are many services and facilities in the area to support young families including childcare, preschools, playgroups, family day care, before and after school care and vacation care.

New Parents

Advice and support for new parents and babies is available through Cremorne Child and Family Health Centre in Parraween Street, Cremorne. Contact the Centre on 9926 5955.

Connections Playgroup

Mosman Council's Connections playgroup, for infants and children 0-5 years, is run at The Drill Hall on Mondays from 10am to 12pm during school terms. It is a fun and creative environment facilitated by experienced staff that provides opportunities for parents and carers to develop social connections in Mosman. New residents and parents are especially welcome. Contact Council's Children & Families Officer on 9978 4166





Childcare & Preschools

There are a number of childcare centres and preschools in the Mosman area. Services are staffed by qualified professionals and teams of caring, experienced staff who understand child development, and program activities that challenge and interest each child. Care is also available through family day care and other private providers.

Before & After School Care

Before & After School Care services for primary school aged children (K-6) during school terms are available through primary schools. These services offer a variety of activities including games, sports, drama and cooking.

Vacation Care

Local schools offer fun, safe, recreational vacation care programs that include in-house activities and excursions for primary school aged children (K-6) during public school holidays.

Playgrounds

Mosman has 14 public children's playgrounds scattered throughout the suburb in park and beachside reserve locations. They range from simple swings and climbing structures to the latest in playground equipment and play design incorporating public art, all-abilities swings and educational features. Interactive maps and more information on each playground is available on Council's MyMosman app.

School Holidays

During school holidays children of all ages are spoilt for choice with special activities and workshops at Mosman Art Gallery and Barry O'Keefe Library. From painting with professional artists, to craft workshops, to building and programming with the latest robotics, Council's school holiday programs provide children with plenty of opportunities for hands-on and engaging ways to have fun and learn new skills. Details and booking links are published in advance online.

For more information visit mosman.nsw.gov.au/children

Contact

Children & Families
Tel: (02) 9978 4166



FAMILIES



YOUNG PEOPLE

Mosman Council provides a variety of services for young people. Many activities are based at the Youth Centre, and programs are developed in consultation with young people from the community.



YOUNG PEOPLE

Youth Centre

For young people of high school age who live or study in Mosman, this is a great space to relax, socialise and interact in a comfortable, judgement-free environment.

The Centre offers free, fun and engaging activities including table tennis, a pool table, trivia competitions, a fully equipped music room, free WiFi, game consoles, a kitchen and hang out spaces with comfortable lounges and bean bags.

Youth workers are on site and can assist with questions on a variety of issues, including resumes and referrals to other community services and facilities.

The Youth Centre is open every weekday as a drop-in space during school term from 3.00pm to 6.00pm, and offers extended hours and special programs during school holidays.

Events

Throughout the year, Council organises a variety of fun and engaging events for teens and young people. Youth volunteers work with staff to put on local youth events from music concerts and band nights, to outdoor cinema screenings and markets. Smaller events are held throughout the school term at the Youth Centre, including youth movie nights and workshops. Council is also involved in the Shoreshocked Music Festival held annually to celebrate National Youth Week.

Volunteering Programs

Mosman's youth volunteering programs are a great way for young people aged 14-18 to get involved in the community, develop organisational skills and connect with other young people who share similar interests. Students can use the programs to contribute to their Duke of Edinburgh Award or IB CAS service requirements.

Council facilitates a number of youth volunteer groups providing young people with an opportunity to participate in projects and activities that interest them. Volunteers support the planning and delivery of youth events, including live music gigs, outdoor markets, small festivals, workshops and activities held at the Youth Centre and in the community. There are also opportunities for volunteers to work on social and environmental projects and campaigns including education initiatives targeting mental health and wellbeing, environmental sustainability and inclusions, along with various other priority areas identified by young people and volunteers. Youth volunteers also play a vital consultative role for Council as they are often engaged to provide a youth perspective and feedback on plans and proposals that Council is considering to ensure youth voices are reflected more broadly in Council decision making.

Parent & Carer Support

Mosman Youth Services offers support for parents, teachers and families, and staff can offer referrals to organisations and services that specialise in working with young people. The Youth Services team holds regular parent information evenings covering various topics, and parents and carers can register to receive Mosman Youth Services updates via a digital newsletter.

For more information visit mosmanyouth.com.au

Contact

Mosman Youth Centre

30 The Crescent, Mosman
(next to carpark)
Tel: (02) 9978 4013
Email: youth@mosman.nsw.gov.au
Facebook: facebook.com/mosmanyouth



AGE FRIENDLY

AGE FRIENDLY

Mosman Council's Community Care team provides a range of high quality services for older residents including wellbeing and social activities, excursions, transport, meals at home, and social support.

Subscribe to Community Care's e-newsletter and SMS updates for older adults for interesting news and information on upcoming events.

For more information visit care.mosman.nsw.gov.au

Seniors Centre

Mosman Square Seniors Centre is a great place for older residents to socialise and connect through Tai Chi, art classes, chess, Zumba Gold, dancing, yoga, table tennis, discussion groups, Mahjong, gardening, walking groups, social outings and more.

All activities are inclusive and the centre offers complimentary tea, coffee, computer terminals and WiFi. Open from 9.00am to 5.00pm, Monday to Friday.



Mosman Meals

Mosman Meals offers home-style meals freshly prepared daily by a local catering company. Options for pickup or delivery include refrigerated and frozen meals, soups, salads, sandwiches and desserts. A varied menu caters for vegetarians and special dietary requirements.

Mosman Meals also offers an online ordering service to make it easy to order tasty, nutritious and well-priced meals delivered to your door. Visit the website at care.mosman.nsw.gov.au

Social Lunches

On Fridays, the Seniors Centre gives older residents the opportunity to socialise over a delicious, low cost two-course lunch. At the end of each month, the lunch is themed with entertainment. Bookings are required and transport is available for Mosman residents requiring assistance.

Community Transport

Flexible door-to-door transport is available for older people and their carers who live in Mosman. Council's Community Transport service offers regular outings for frail older people, as well as popular bus trips for active, independent older people. Door-to-door transport is available to and from the Seniors Centre for social activities and weekly social lunches, as well as medical appointments, visiting, shopping, library and social activities.

Social Support

Through Council's Community Links program volunteers support frail older people living in their own homes with assisted shopping, transport to appointments and companionship. Council also provides various group activities to help combat social isolation by establishing and maintaining social networks within the local community.

Men's Shed

Mosman Men's Shed is a welcoming environment where men can make stuff, get advice, have a yarn, and potter around. The shed is located on the corner of Suakin Drive and Dominion Crescent near Georges Heights Oval in Mosman.

For more information email: mosmanmensshed@gmail.com

For more information visit mosman.nsw.gov.au/seniors

Contact

Mosman Community Care & Mosman Square Seniors Centre

Civic Centre, Mosman Square
Tel: (02)9978 4128 or (02)9978 4119
Email: community.care@mosman.nsw.gov.au

HELP AT HAND

We all need a hand at times, Council and the community are ready to help.

Migrant & ESL Services

For residents new to Australia or with English as a second language Mosman Council has welcome packs with quick reference guides on local services on its website. These are available in a number of languages including Chinese, Japanese, Korean, Farsi and Spanish. Council also has a number of staff who are fluent in languages other than English, and the Translating and Interpreting Service (TIS) on 13 14 50 can provide trained telephone interpreters.

To assist with learning English, Mosman Seniors Centre also hosts a weekly English Conversation Group

People with Disability

Council's Community Care team is staffed by professionals and provides a range of services and activities for residents with disabilities, their families and carers, including social support, transport, information and referral services. For more information contact (02) 9978 4128 between 9.00am to 5.00pm, Monday to Friday.

For young adults aged 18-40 years with a disability, Friday Night Group provides social and recreational activities on the third Friday of every month including outings, dinners, bowling, disco nights, workshops and movie nights. Drama Group held every Thursday also provides an interactive drama and improvisation course for young people with disability. For more information and registrations contact (02) 9978 4128.

Mosman Carers

Mosman Carers provides group support and referral information for residents caring for a family member or friend with an illness, dementia or a disability. There are guest speakers and bus outings which provide some 'time out' for carers in a friendly, relaxed atmosphere. Mosman Square Seniors Centre also runs creative programs staffed by trained professionals and volunteers designed for people with memory loss.
Tel: (02) 9978 4089

Accessibility

Council aims to remove systemic and attitudinal barriers so that people with disability have more opportunities to enjoy life in the Mosman community. Council works to improve outcomes through four key areas:

- Promoting positive attitudes and behaviours towards people with disability
- Making improvements to ensure our community is easier to live in and get around
- Helping to facilitate access to volunteering and work opportunities for people with disability
- Making sure the information we provide is easy to understand and our services are accessible and inclusive.

For more information visit mosman.nsw.gov.au/community



HELP AT HAND



VOLUNTEER

VOLUNTEERING

Volunteers are a valuable and celebrated part of the Mosman community.

Mosman Council has a range of interesting opportunities for people to get involved and make a difference by contributing some of their time to help deliver local services and programs.

Community Care

- Social support and visiting: To support older residents who live at home by providing companionship and assisting with grocery shopping, medical visits, walks, or just being there for cup of tea and a chat.
- Community transport: As an individual transport driver to help residents who need assistance to go to medical appointments or activities, or as a bus assistant for outings and transfers to social lunches at Mosman Square Seniors Centre.
- Food services: As a driver or helper for Mosman Meals or with social lunches
- Seniors Centre activities: As a group facilitator or assistant for many of our activities.

Environment Management

- Bushcare: A program to protect and restore remnant urban bushland that provides habitat for native wildlife.
- HarbourCare: With groups for adults and teens, HarbourCare volunteers help keep Mosman's foreshores clean by collecting rubbish and reporting the data back to Council.



VOLUNTEERING

Mosman Library Services

- Home Library Service: Delivery and collection of books and CDs for residents who are housebound.
- Local Studies: Various volunteering opportunities include conducting oral history interviews, researching Mosman sites or buildings, or assisting library users with family history research; as an exhibitions assistant; or in managing archival records.

Mosman Art Gallery

- Assistant: Providing general administrative assistance including helping visitors and supervising exhibitions.
- Guide: Presenting guided tours of current exhibitions.
- Research: Researching the Mosman Art Collection and future exhibitions.
- Events: Assisting with opening nights, public programs and other special community events.

To find out more about becoming a volunteer contact Mosman Council's Volunteers' Office on (02) 9978 4126 or email volunteer@mosman.nsw.gov.au

For more information visit mosman.nsw.gov.au/volunteering

BUSINESS

Mosman Council encourages residents to think global, and shop and eat local.

Mosman is home to many thriving enterprises with businesses ranging from some of Sydney's finest restaurants and top boutiques, to various professional service providers including financial, automotive, property, hairdressing, recreational, legal and accounting.

Mosman Chamber of Commerce

Mosman's Chamber of Commerce is a vibrant networking organisation for local businesses. It brings local business owners and staff together through regular events such as monthly lunches and after-hours functions, and offers marketing opportunities through its membership directory, Facebook page, Mosman Market stall and other channels. The Chamber works with Council on a range of projects and engages local businesses on key local issues.

For more information visit their website at mosmanchamber.com.au

Food Safety & Public Health

Ensuring that businesses are clean, hygienic and safe is a priority for Council. Officers conduct regular inspections of food shops, cooling towers and skin penetration premises to ensure they comply with health legislation.

Sustainability

Council encourages local businesses to operate in a sustainable, ethical manner and adopt strategies that minimise wastage of water, energy and resources, and develop a socially aware corporate culture. The business section of Council's website also provides a page of resources to assist the financial sustainability of local businesses, including information on grants, training and support programs.

For more information visit mosman.nsw.gov.au/business



BUSINESS



COMMUNITY WELLBEING





COMMUNITY WELLBEING

Mosman Council works in collaboration with local police (North Shore Police Area Command), community organisations, emergency services and support services to improve public safety, reduce crime and maintain Mosman as a safe community.

Crime Prevention

Closed circuit television (CCTV) cameras are located at Council facilities to enhance community safety and reduce crime by deterring potential offenders and assisting police in the detection and prosecution of offenders. Council is also committed to prompt removal of graffiti and prevention of vandalism.

To report graffiti or vandalism to private or Council property contact Urban Maintenance Systems on 0418 478 842 or email infns@ums.com.au identifying yourself as a Mosman resident and provide location and details.

For information and contact details for graffiti removal on other properties visit mosman.nsw.gov.au/graffiti.

Domestic Violence

Council supports the Lower North Shore Domestic Violence Network, a forum for workers in domestic violence and related support services to undertake projects to reduce the incidence and impact of domestic violence within the Lower North Shore.

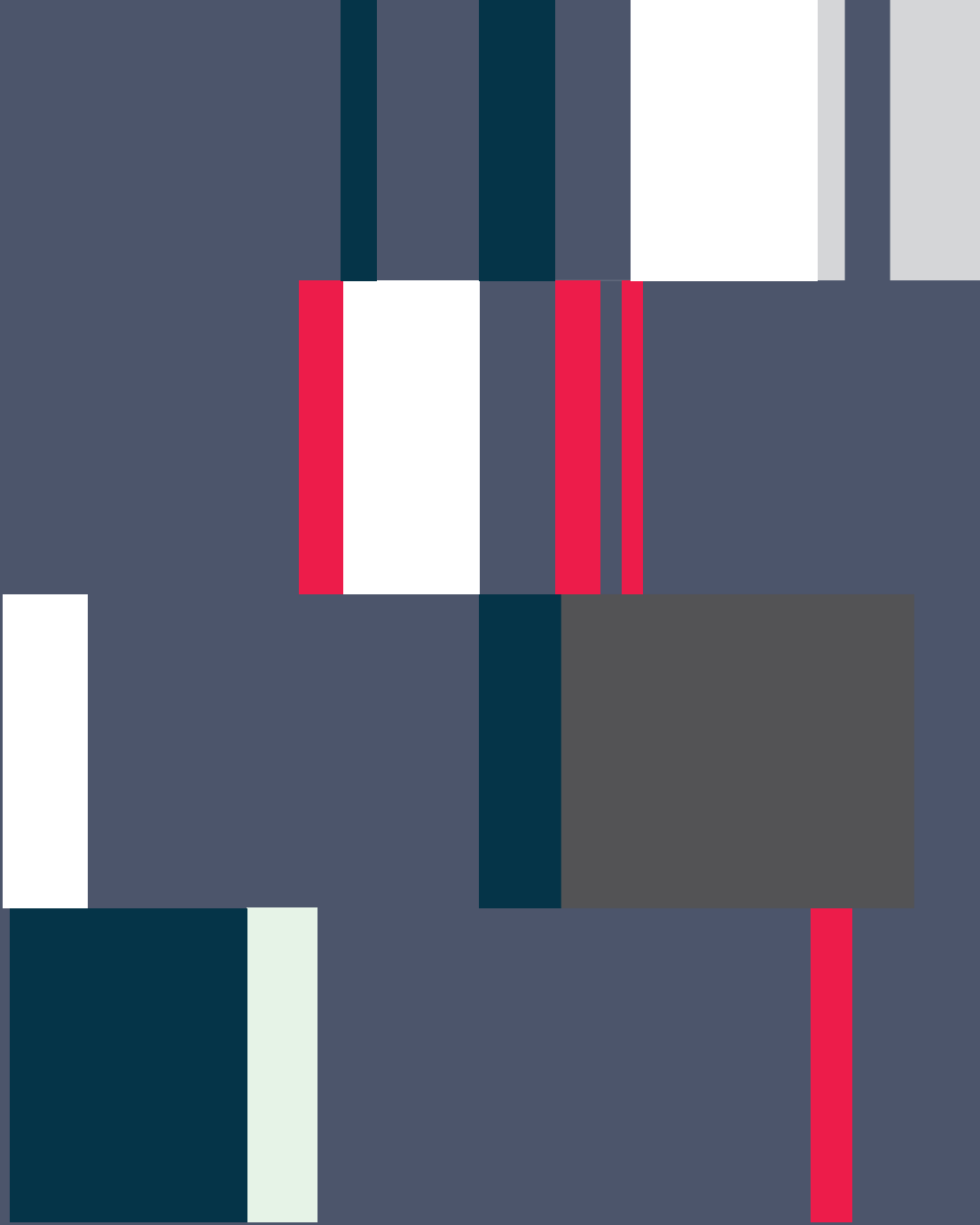
If you are concerned about domestic violence, or would like information or support, visit the Network's website at northshoredomesticviolence.org.au or call the NSW Domestic Violence Line on 1800 656 463 (24 hours, 7 days per week).

Smoke Free Zones

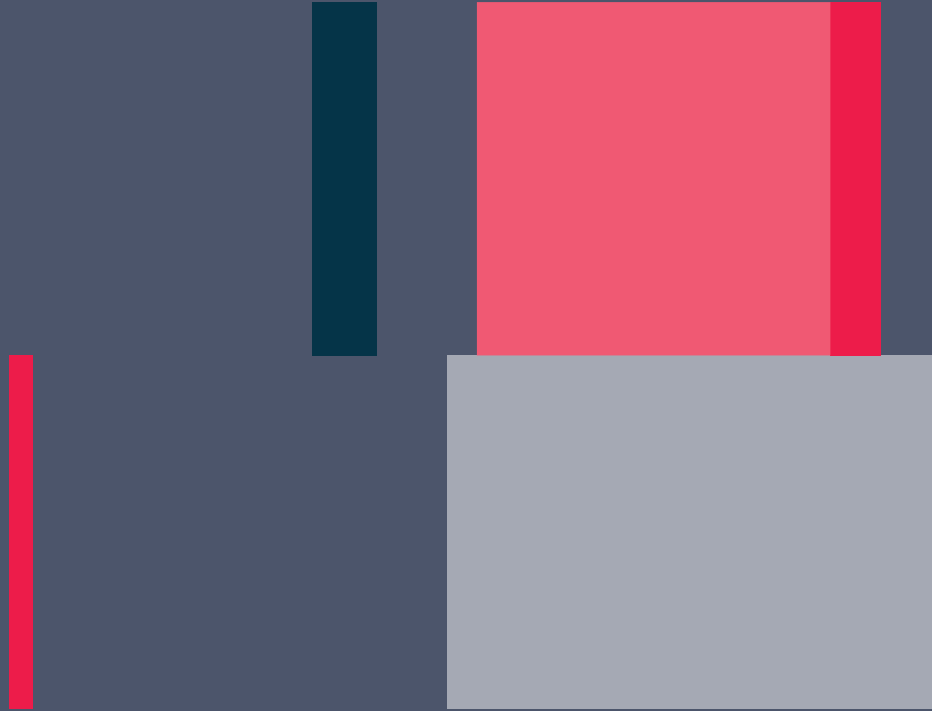
To preserve the right of residents and visitors to a clean and healthy environment, Council has made its beaches, children's playgrounds, playing fields and a number of public spaces smoke free. Smoking is not permitted in the following areas:

- Beaches, parks and reserves.
- On and around Council sporting grounds, playing fields, bushland areas, bus shelters and underground car parks.
- Within 10 metres of Council properties.
- At designated and signposted alfresco dining areas on Council land.
- At Council events.

NSW Health has also banned smoking in any seated outdoor dining area of a restaurant, café or licensed venue while food is being served.



5



YOUR COUNCIL



COUNCIL

Vision

Mosman Council's vision for Mosman is:

A vibrant, inclusive harbourside village where community and heritage are valued and where residents feel safe and connected.

Values

Council has six values that guide the way services are delivered and help to ensure it remains progressive, accountable and responsive to the community.

- Leadership
- Integrity
- Transparency
- Service
- Inclusiveness
- Respect

In addition Council supports and advocates the social justice principles of equity, access, participation and rights in both service planning and delivery.



COUNCIL

Serving you

Council's Customer Service Charter outlines our commitments to service standards and how we will communicate with customers.

The charter articulates our friendly, courteous, respectful and efficient service provision which ensures staff maintain the highest of service standards. We welcome your suggestions and feedback to help us continually improve.

For more information about our Customer Service Charter visit mosman.nsw.gov.au/council/about

Strategic Planning

Council's long term vision for Mosman's future is articulated in its Community Strategic Plan, Resourcing Strategy, Delivery Program and Operational Plans, which are collectively known as 'MOSPLAN'. Council's efforts are guided by seven Strategic Directions:

1. A safe, caring and inclusive community
2. A culturally rich and vibrant community
3. An attractive and sustainable environment
4. An engaged, business-friendly community with strong civic leadership
5. Well designed, liveable and accessible places
6. A healthy and active village lifestyle.

Civic Centre

Mosman Civic Centre is located in Mosman Square and houses rooms for special functions and events, Council Chambers and the offices of the Mayor and Council staff.

Council's Customer Service Centre is on the ground floor and provides a welcoming, modern environment. It includes comfortable seating areas, complimentary coffee and self-service internet kiosks. Council also has numerous payment options and forms available online.

Justice of the Peace

Council's Customer Service Centre offers a JP service, subject to availability. Bookings are required for the service and can be made by calling 9978 4000.

A JP service is also available at Barry O'Keefe Library on Wednesdays only from 12pm to 2pm with no bookings required.

Following advice from the NSW Department of Justice, JPs are unable to witness or verify Enduring Powers of Attorney or Laminated Citizenship Certificates. NSW JPs also cannot witness the execution of international documents for use overseas, including Proof of Life.

Rangers

Council's Rangers are on duty seven days a week from 6.00am to 6.00pm.

Rangers can assist in matters regarding parking, pollution, barking or stray dogs, building sites working out of hours and abandoned vehicles (if unregistered).

They are identifiable by their vehicles, green and khaki uniforms with Mosman Ranger shoulder patches, and can be contacted on (02)9978 4081 (excluding Christmas Day).

ORGANISATION

Day-to-day management of Mosman Council is the responsibility of the General Manager, supported by staff in three departments: Community Development, Corporate Services, and Environment and Planning.

Meetings

The Council meets monthly on the first Tuesday of each month from February to December in the Council Chambers on the first floor of the Civic Centre.

Meetings start with Open Question Time at 6.40pm, and the Council meeting commences at 7.00pm.

Meeting agendas and minutes are published on Council's website at mosman.nsw.gov.au/council/meetings

Members of the public are welcome to attend Council meetings or can watch them live or via archived webcasts at webcast.mosman.nsw.gov.au

Elections

Council elections are generally held every four years. The Deputy Mayor is elected annually by the Council.

Mayor & Councillors

Mosman is governed by an elected Council of seven members comprising a popularly-elected Mayor and six Councillors.



Carolyn CORRIGAN - MAYOR
mayor@mosman.nsw.gov.au



Roy BENDALL
r.bendall@mosman.nsw.gov.au



Pip FRIEDRICH
p.friedrich@mosman.nsw.gov.au



Sarah HUGHES
s.hughes@mosman.nsw.gov.au



Simon MENZIES
s.menzies@mosman.nsw.gov.au



Libby MOLINE
l.moline@mosman.nsw.gov.au

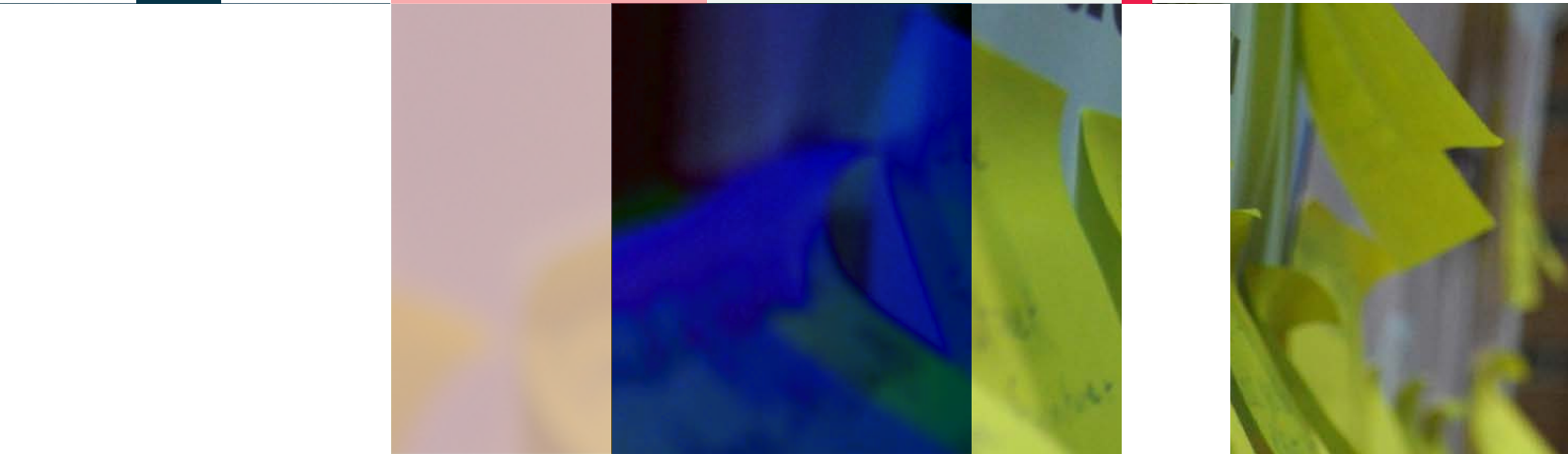


Michael RANDALL
m.randall@mosman.nsw.gov.au



ORGANISATION







HAVE YOUR SAY

Mosman Council values feedback and ideas from residents to help identify areas where services can be improved, community satisfaction increased, and the most timely responses provided.

Consultation

Council has an online community consultation hub - yourvoicemosman.com.au - to enable residents to easily provide feedback and ideas on a range of issues and projects that affect the community. The site lists all community consultations open for comment, and residents are strongly encouraged to get involved and have their say.

Council also conducts regular consultations via public meetings, focus groups, surveys, written submissions, workshops, roundtables and community committees.

For more information visit yourvoicemosman.com.au

HAVE YOUR SAY

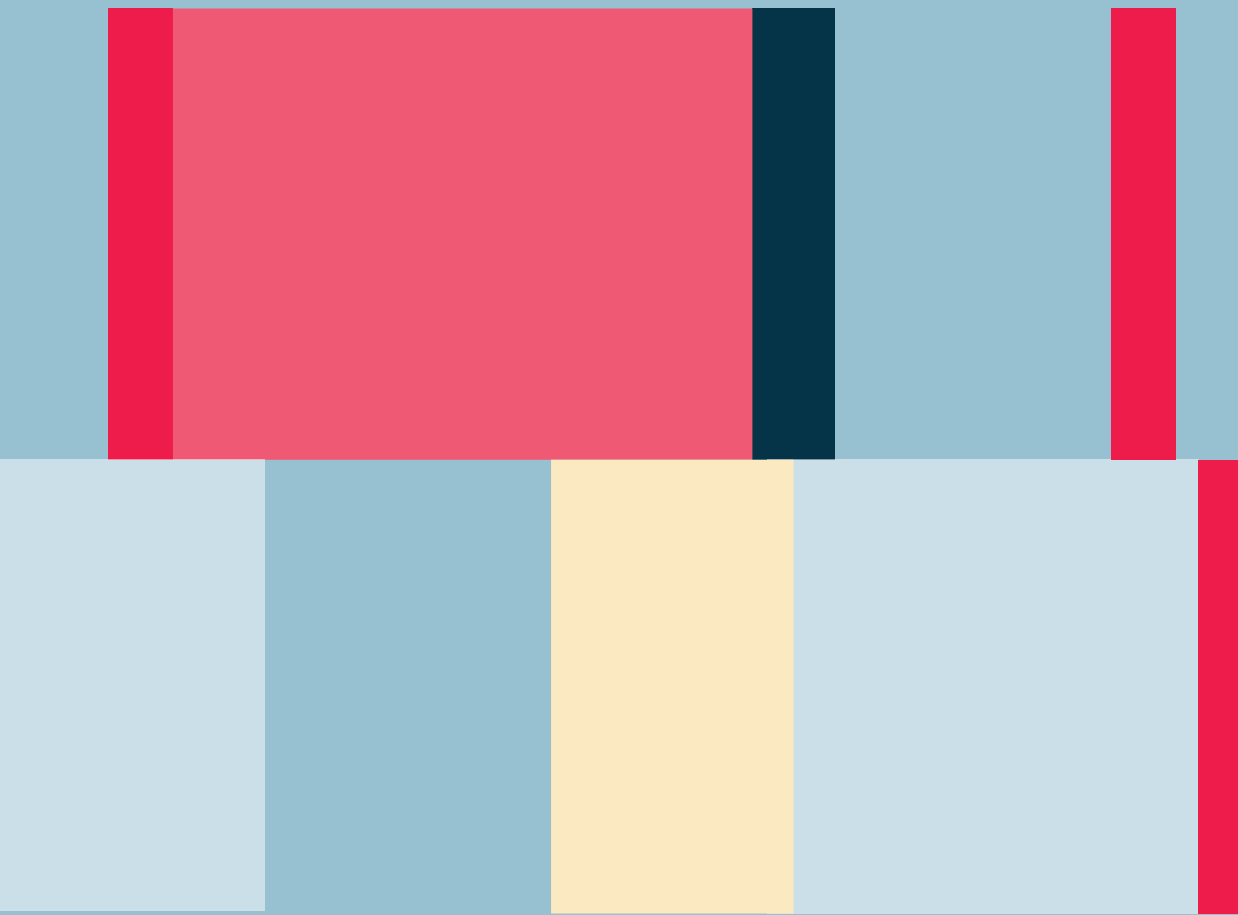
Council Committees

Council's community consultative committees provide opportunities for community members to actively contribute to conversations about local issues and services. These committees bring stakeholders together to work through issues in a consultative manner on matters such as active transport, climate action, visual amenity, arts and culture, and access and mobility.

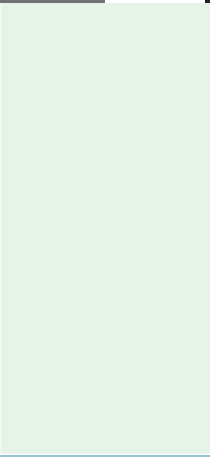
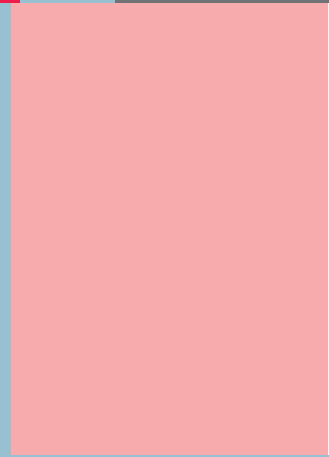
Each committee has a charter, including its terms of reference, composition, membership criteria and general operating guidelines.

Members of the community are able to participate in one community consultative committee at a time, with membership generally being advertised following each Council election.

For more information visit mosman.nsw.gov.au/communitycommittees



6



EASY **DIRECTORY**

CONTACTS

You can contact Mosman Council on (02) 9978 4000. After hours you can leave a voice message and if it is urgent you will be diverted to Council's emergency contact.

General correspondence can be posted or emailed and should be addressed to the General Manager, and include your name and address.

If you would like to report something you can also contact Council via the MyMosman app (see pages 8-9) or the online forms available on Council's website. Your message will be directed to the responsible person.

Mosman Council

In person

Customer Service
Civic Centre
Mosman Square
Monday to Friday
8.30am-5.00pm
Closed on public holidays

By phone

(02) 9978 4000 (24 Hrs)
Rangers (02) 9978 4081

By mail

General Manager
Mosman Council
PO Box 211
Spit Junction NSW 2088

By email

council@mosman.nsw.gov.au

Online

mosman.nsw.gov.au

Emergency Services

Ambulance/Police/Fire 000
Mosman Police (02) 9969 1933
NSW SES 132 500
Poisons Info Centre 131126
Royal North Shore Hospital (02) 9926 7111
Lifeline 131114
Beyond Blue 1300 224 636



CONTACTS



A-Z

A **Abandoned vehicles**
Rangers (02) 9978 4081

Accessible facilities
Community Care (02) 9978 4119
See Disability services

After hours (Mosman Council)
(02) 9978 4000

Animals
See Pets
See Wildlife

Art Gallery (Mosman)
(02) 9978 4178
mosmanartgallery.org.au

B **Beaches**
- Cleaning (02) 9978 4036
- Rangers (02) 9978 4081

Bookings (venues)
See Venues

Building
- Advice (02) 9978 4232
- Reporting unauthorised works
(02) 9978 4094

Bushcare
(02) 9978 4038

Business Enterprise Centre (Northside)
(02) 9415 2630

C **Carers support**
Mosman Carers' Group (02) 9978 4089

Chamber of Commerce (Mosman)
(02) 9904 0200

Citizenship ceremonies
(02) 9978 4061

Cleaning (public areas)
Streets, beaches and toilets
(02) 9978 4036

Community Restaurant
Bookings (02) 9978 4130

Community Transport
(02) 9978 4120

Cremorne Early Childhood Health Centre
(02) 9953 7042

D **Development Applications (DAs)**
Duty planner (02) 9978 4172

Disability services
- Activities and support (02) 9978 4119
- Young peoples' groups (02) 9978 4128
- Parking stickers (RMS) rta.nsw.gov.au
or 132 213

E **Elections**
Australian Electoral Commission
aec.gov.au 132 326

Environmental health
Air and water pollution, food premises,
vermin, legionella control (02) 9978 4094

Events
events.mosman.nsw.gov.au

Exhibitions - Art
Mosman Art Gallery (02) 9978 4178



F

Festival of Mosman
festivalofmosman.net
(02) 9978 4050

Filming
Permits and enquiries
(02) 9978 4070

Flooding
SES 132 500

Food safety
See Environmental health

Footpaths
Restoration and repairs (02) 9978 4027

G H

Garbage
See Waste

Heritage matters
(02) 9978 4154

Hospital
Royal North Shore (02) 9926 7111

J K

Justices of the Peace
(02) 9978 4141

**Kimbriki Resource Recovery Centre
(Tip self-disposal)**
kimbriki.com.au
(02) 9486 3512 or (02) 9486 3542

L

Library (Barry O'Keefe Library)
mosman.nsw.gov.au/library
(02) 9978 4090 or (02) 9978 4091

Lighting
Streets, ovals and parks (02) 9978 4000

M

Mosman Art Prize
Mosman Art Gallery (02) 9978 4178

Mosman Design Awards
mosmandesignawards.com.au
(02) 9978 4154

Mosman Swim Centre
(02) 9969 3888

Mosman Market
Stallholder enquiries (02) 9978 4178

Mosman Meals
meals@mosman.nsw.gov.au
(02) 9978 4130

Mosman Youth Art Prize
Mosman Art Gallery (02) 9978 4178

Mosman Youth Awards in Literature
Mosman Library Services (02) 9978 4091

N P

Noise (construction)
Rangers (02) 9978 4081

Parking permits
vPermit vpermit.com.au/mosman

Pavements
Restoration and repairs (02) 9978 4027

Pets
- Dog and cat registration (02) 9978 4171
- Reporting barking/stray dogs
(02) 9978 4081
- Lost pets and animal shelter, Cremorne
Veterinary Hospital (02) 9953 1090

Planning (development)
Duty planner (02) 9978 4172

R

Pound (animals)
Cremorne Veterinary Hospital 9953 1090

Police
Emergency 000
Mosman Police Station (02) 9969 1933

Public transport
transportnsw.info
131 500

Rangers
(02) 9978 4081

Rates
(02) 9978 4140

Recycling
Enquiries (02) 9978 4076
Free signage and resources
(02) 9978 4000

Reporting
- Barking/stray dogs (02) 9978 4081
- Flooding, SES 132 500
- Illegal dumping (02) 9978 4076
- Noise (construction) (02) 9978 4081
- Pollution (02) 9978 4000
- Sewer leaks, Sydney Water 132 090
- Stormwater drain damage
(02) 9978 4000
- Trees on power lines, Ausgrid
1300 738 733.
- Unauthorised building work
(02) 9978 4094
- Unauthorised tree work
(02) 9978 4000
- Vandalism (02) 9978 4081

Road closures
rms.nsw.gov.au
132 701

Road safety
(02) 9978 4032

S

School holiday programs
events.mosman.nsw.gov.au

Seniors Centre
(02) 9978 4128

Seniors services
Including activities, support and referrals
(02) 9978 4128 or (02) 9978 4119

Sewer overflows
Sydney Water 132 090

Social support
For elderly and people with disabilities
(02) 9978 4128 or (02) 9978 4119.

Spit Bridge opening times
rms.nsw.gov.au
(02) 8849 2110

Sports grounds
Wet weather line (02) 9978 4136

State Emergency Service
132 500

Street cleaning
(02) 9978 4036

Swim Centre
(02) 9969 3888

Swimming pools
Inspections and registrations
mosman.nsw.gov.au/pools

T

Sydney Harbour Federation Trust
(02) 8969 2100

Sydney Harbour National Park
(02) 9960 6266

Taronga Zoo
(02) 9969 2777

Traffic issues
(02) 9978 4022

Transport
Community Transport (02) 9978 4120

Trees
- Pruning, removal and reporting
unauthorised tree work (02) 9978 4000
- Overhanging power lines, Ausgrid
1300 738 733

V

Vandalism
Council property (02) 9978 4036 or
Urban Maintenance Systems 0418478842

Venue hire
mosman.nsw.gov.au/venues
- Marie Bashir Mosman Sports Centre
(02) 9932 4500
- Mosman Art Gallery & Community Centre
(02) 9978 4016
- Mosman Drill Hall (02) 9932 4502
- Mosman Youth Centre (02) 9978 4013
- Outdoor locations and reserves
(02) 9978 4070

Visitor information
Mosman Library Services (02) 9978 4167
or (02) 9978 4091

Volunteering
- Volunteers' Office (02) 9978 4126
- Bushcare (02) 9978 4126
- HarbourCare (02) 9978 4043
- Mosman Art Gallery (02) 9978 4178
- Mosman Library Services
(02) 9978 4090
- Youth programs (02) 9978 4013

W

Walking trails
MyMosman app via app stores

Waste line
General enquiries, missed services,
pre-paid collections (02) 9978 4076.

Water
Service difficulties and emergencies,
Sydney Water 13 20 90

Wildlife
- Native animal care - Taronga Wildlife
Hospital (02) 9978 4785
- Wildlife Information & Rescue Service
(WIRES) 1300 094 737

Work and Alerts
- works.mosman.nsw.gov.au

Y

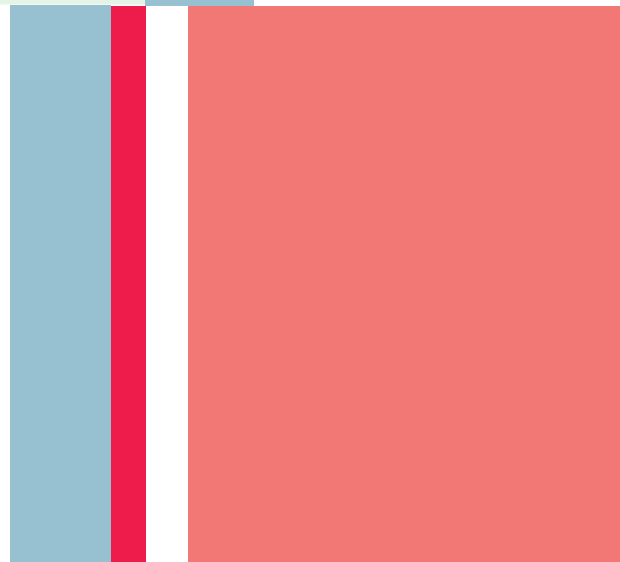
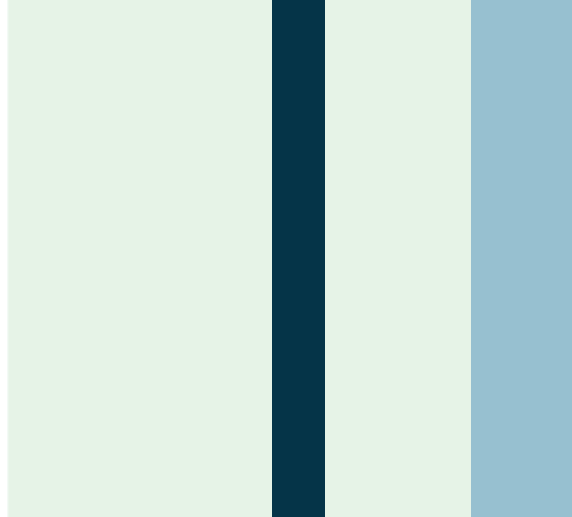
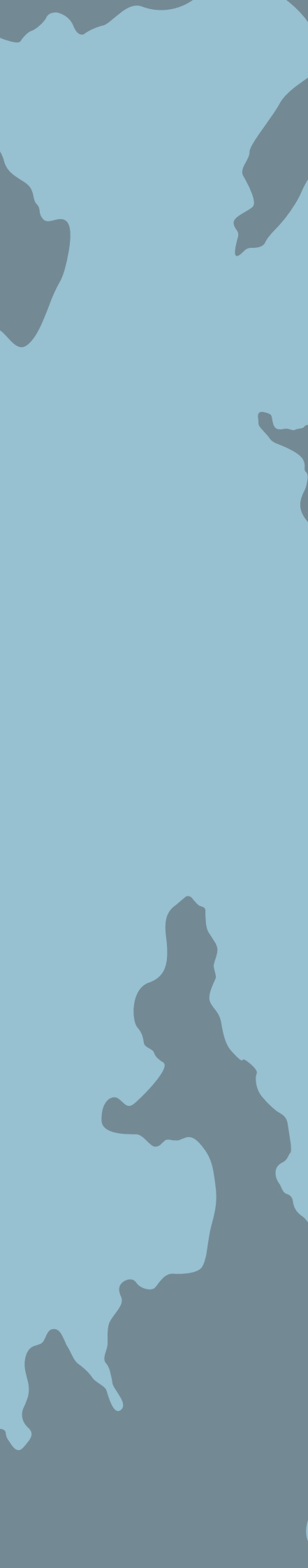
Youth
- Youth Centre (02) 9978 4013
- Services (02) 9978 4144

Z

Zoning
- Payment and lodgement
(02) 9978 4000
- Certificates (02) 9978 4232
- Maps (02) 9978 4214



Scale
● Mosman Council Civic Centre

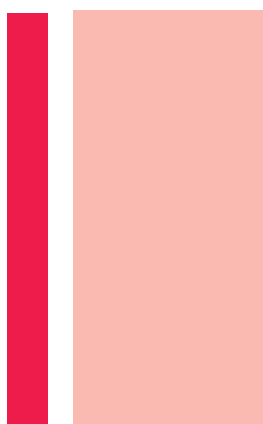


Civic Centre, Mosman Square
Mosman NSW 2088
PO Box 211, Spit Junction NSW 2088
Tel (02)9978 4000
Email council@mosman.nsw.gov.au

mosman.nsw.gov.au



New Residents Guide to Mosman
©2022 Mosman Council. All rights reserved.
Information correct at time of publication.
Last updated July 2022 210254.001 V12



**NEW RESIDENTS
GUIDE TO MOSMAN**

**Mosman
COUNCIL**